

INSTRUMENT APPROACH CHART - ICAO

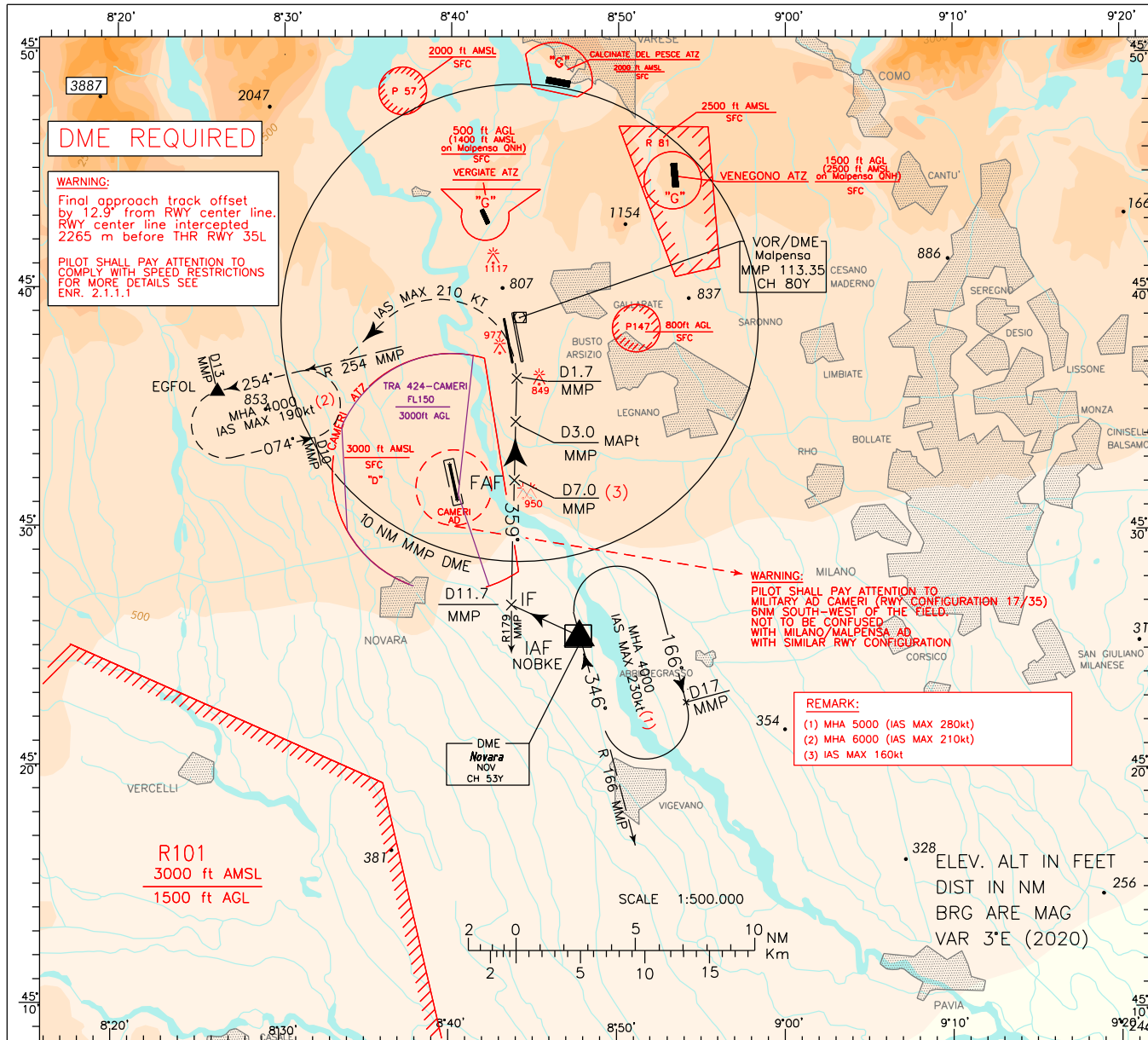
AD ELEV 768

APP	Milano Radar	125.630 (132.705)
TWR	Malpensa TWR	128.350
ATIS	Malpensa Arrival Information	120.025

MILANO/MALPENSA (LIMC)
VOR RWY 35L

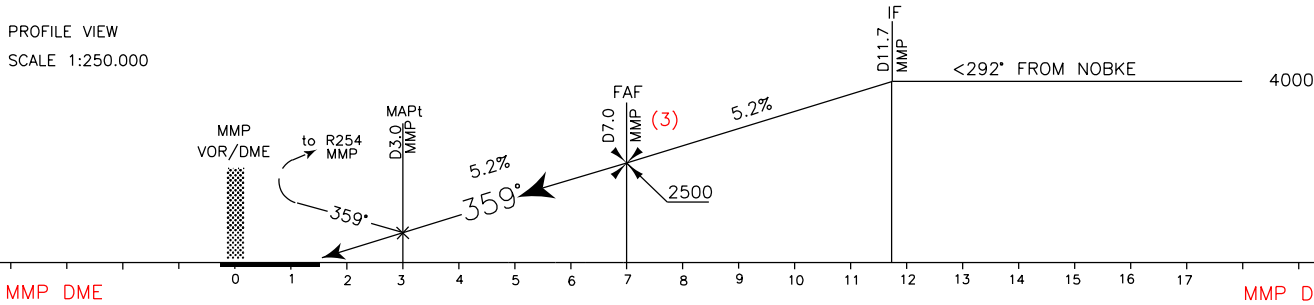
DOC 8168 ED 6 2014 AMDT 8

CHANGE: VERGIATE ATZ MODIFIED AND WARNING UPDATED



TRANSITION ALT 6000 MISSED APPROACH: Proceed on TR 359° climbing to 4000 ft. At 1.7 NM before MMP DME turn left (IAS MAX 210kt) to intercept and follow RDL 254 MMP VOR to EGFOL holding pattern.

PROFILE VIEW
SCALE 1:250.000



STRAIGHT IN APPROACH	OCA (OCH)				CIRCLING SECTORS	FT PER MIN	GS	DIST MMP	ALT (HGT)	MNM SECT ALT MMP	VOR/DME
	A	B	C	D							
STRAIGHT IN APPROACH	VOR	1200 (504)					850	160	6 DME	2500 (1804)	
	CIRCLING	1450 (682)	1650 (882)	1710 (942)	740		140	5 DME	2160 (1464)		
					635	120	4 DME	1520 (824)			
					530	100	3 DME	1200 (504)			