

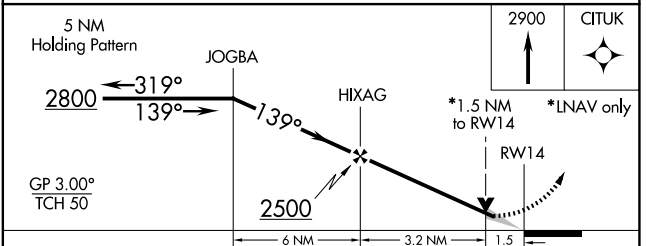
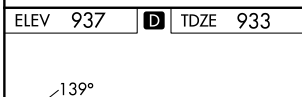
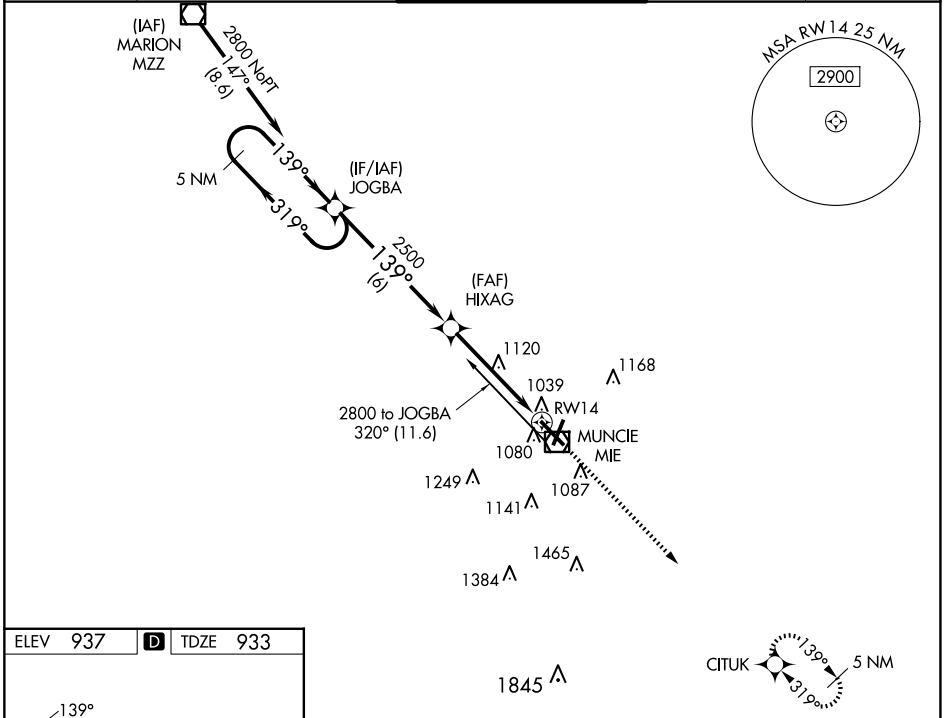
WAAS CH 56401 W14A	APP CRS 139°	Rwy Idg TDZE Apt Elev	6500 933 937
--	------------------------	-----------------------------	---

RNAV (GPS) RWY 14

DELAWARE COUNTY RGNL (MIE)

RNP APCH.	<p>▼ For uncompensated Baro-VNAV systems, LNAV/VNAV NA below -1.6°C (4°F) or above 47°C (116°F). Baro-VNAV and VDP NA when using Fort Wayne Intl altimeter setting. When local altimeter setting not received, use Fort Wayne Intl altimeter setting and increase LPV DA all Cats to 1375 and visibility 3/8 SM, LNAV/VNAV DA all Cats to 1410 and visibility 1/8 SM; increase all MDA 140 feet and LNAV Cat C 1/2 SM and Cat D 1/4 SM, Circling visibility Cat C/D 1/2 SM.</p>	MISSED APPROACH: Climb to 2900 direct CITUK and hold.
-----------	---	--

ATIS 133.25	INDIANAPOLIS APP CON 120.65 317.8	MUNCIE TOWER ★ 120.1 (CTAF) 0	GND CON 121.9	UNICOM 122.95
-----------------------	---	--	-------------------------	-------------------------



CATEGORY	A	B	C	D
LPV DA	1254-1		321 (400-1)	
LNAV/VNAV DA	1289-1¼		356 (400-1¼)	
LNAV MDA	1420-1	487 (500-1)	1420-1¼ 487 (500-1¼)	1420-1½ 487 (500-1½)
C CIRCLING	1460-1¼	523 (600-1¼)	1480-1½ 543 (600-1½)	1560-2 623 (700-2)

HIRL Rwy 14-32 **0**
MIRL Rwy 3-21 **0**
REIL Rwy 3, 14 and 21 **0**

EC-2, 20 MAR 2025 to 17 APR 2025

EC-2, 20 MAR 2025 to 17 APR 2025