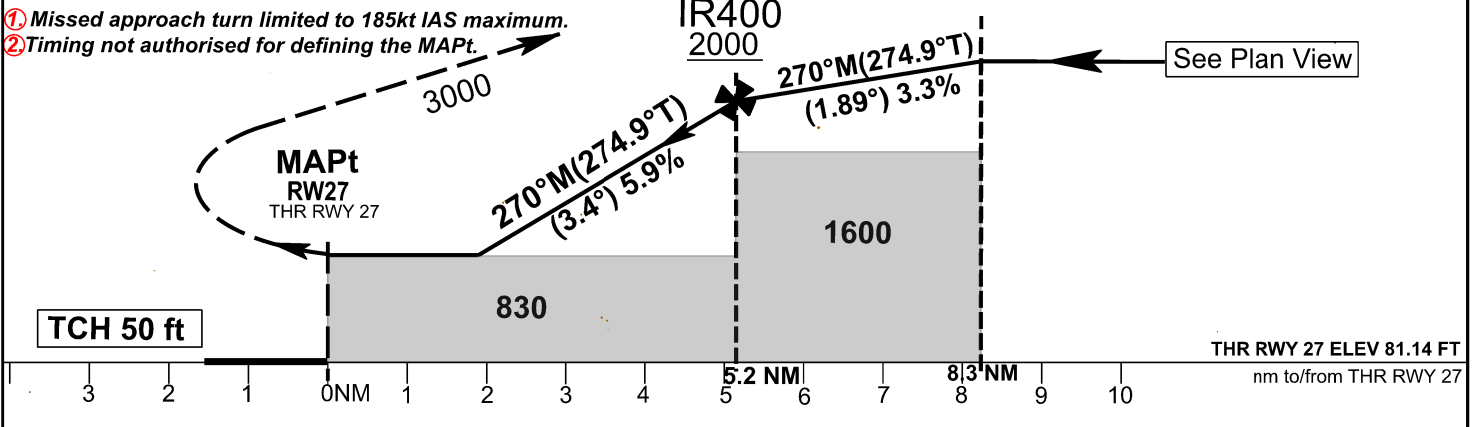


MISSED APPROACH PROCEDURE
 Turn right at, but not before MAPt (THR RWY 27), direct to IR700.
 At IR700 turn right, proceed to GONSO. Climb to 3000ft to join holding at GONSO or as directed by ATC.

- ① Missed approach turn limited to 185kt IAS maximum.
- ② Timing not authorised for defining the MAPt.



OCA(OCH)	A	B	C	D
LNAV	830 (749)	830 (749)	830 (749)	830 (749)
NO CIRCLING SOUTH OF RWY 09/27	1100 / 990	1100 / 990	1100 / 990	1100 / 990

ALTITUDE ON FINAL APPROACH					
DIST THR 27 - MAPt (NM)	5	4	3	2	1.9
ALTITUDES (ft)	1940	1580	1220	860	830
G.S (kts)	80	100	120	140	160
Rate of descent (ft/min)	481	602	722	842	963

PAPI-L/3°

Change: MAGNETIC VARIATION

TRANSITION FROM BASAS

App Trst ID	Ser No	Path Descriptor	Waypoint ID (ROLE)	F/O	Course °M(°T)	Mag Var.	Distance (NM)	Turn	Altitude (ft)	Speed (kts)	Navigation Specifications
BASAS	010	IF	BASAS (IAF)	-					+6000		RNP APPROACH
	020	TF	IR401 (IF)	-	268 (273.2)	5.00°E	11.50		+2300	-185	RNP APPROACH

TRANSITION FROM GONSO

App Trst ID	Ser No	Path Descriptor	Waypoint ID (ROLE)	F/O	Course °M(°T)	Mag Var.	Distance (NM)	Turn	Altitude (ft)	Speed (kts)	Navigation Specifications
GONSO	010	IF	GONSO (IAF)	-					+3000		RNP APPROACH
	020	TF	IR402	-	146 (150.7)	5.00°E	6.00		+3000	-185	RNP APPROACH
	030	TF	IR401 (IF)	-	240 (244.9)	5.00°E	5.00		+2300		RNP APPROACH

RNP APCH RWY27

APP ID	Ser No	Path Descriptor	Waypoint ID (ROLE)	F/O	Course °M(°T)	Mag Var.	Distance (NM)	Turn	Altitude (ft)	Speed (kts)	VPA/TCH °/m	Navigation Specifications
R27	010	IF	IR401 (IF)	-					+2300			RNP APPROACH
	020	TF	IR400 (FAF)	-	270 (274.9)	5.00°E	3.10		+2000			RNP APPROACH
	030	TF	RW27 (MAPT)	Y	270 (274.9)	5.00°E	5.20		+830	-185	3.4/50	RNP APPROACH
	040	DF	IR700	-				R				RNP APPROACH
	050	TF	GONSO	-	090 (094.8)	5.00°E	9.20		+3000			RNP APPROACH
	060	HM	GONSO	-	232 (237)	5.00°E		R	+3000			RNP APPROACH

WAYPOINT LIST

Identifier	Latitude	Longitude
GONSO	352659.00N	0252327.00E
BASAS	351900.00N	0253531.00E
IR400	351954.12N	0251745.73E
IR401	351938.59N	0252129.64E
IR402	352146.30N	0252701.59E
IR700	352746.07N	0251213.29E
RW27	352020.44N	0251127.36E