

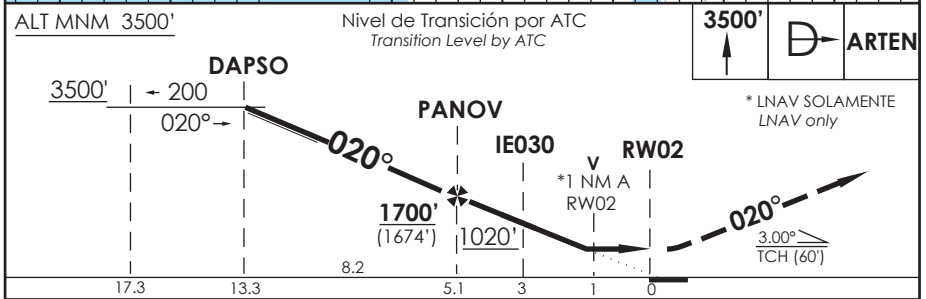
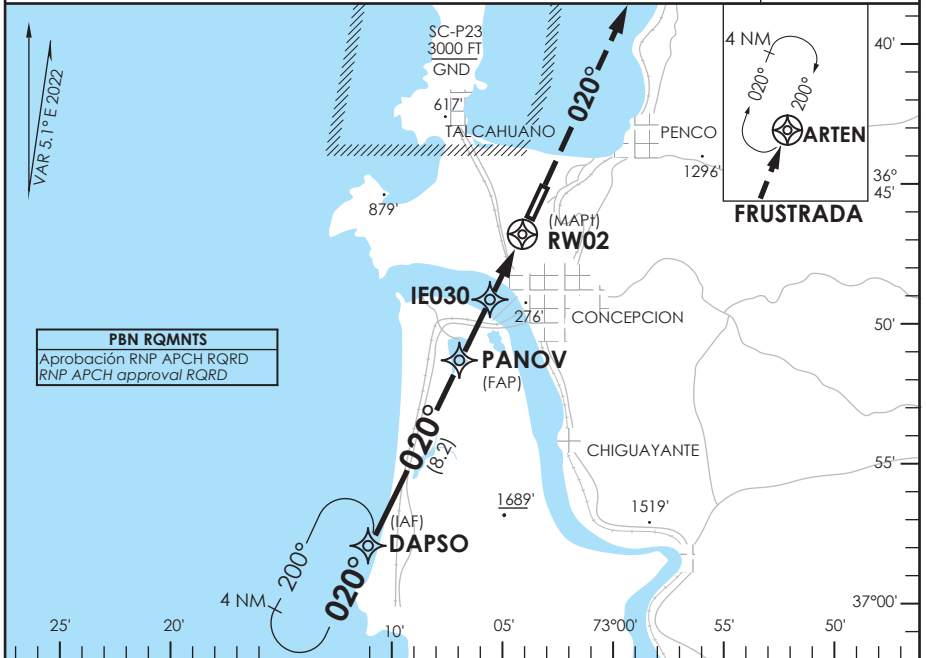
AD. CARRIEL SUR (INTL O/R)
CONCEPCION - CHILE

SCIE IAC 9
RNP Y RWY 02

CONCEPCION RADAR Concepción RADAR	125.8/129.35	TORRE CONCEPCION Concepción Tower	118.6	CONTROL TERRESTRE Ground Control	121.9
RNP	FINAL APCH CRS 020°	MNM ALT PANOV 1700' (1674')	LNAV/VNAV DA(H) 330' (304')	AD Elev. THR 02 Elev.	26' 26'

APCH FRUSTRADA: Ascenso 3500' directo ARTEN, ingrese HLDG 200° derecha o según autorización ATC.
 Missed Apch: Climb to 3500' direct to ARTEN, enter on HLDG 200° right or according to ATC clearance.

4300 FT
MSA 25 NM RWY02



CATEGORÍA	DIRECTO RWY 02 Straight in RWY 02				CIRCULANDO OESTE Circling West	ALTN Alternate Minimums
	LNAV/VNAV DA 330' (304')		LNAV MDA 400' (374')			
A	1.2 Km	1.6 Km	1.2 Km	1.6 Km	560' (534')	VER PAG. GEN 2.19
B					640' (614')	
C					2.8 Km	
D					3.2 Km	

PROC BARO-VNAV NA BLW -10°C ó ABV 47°C					
Veloc. Terrestre Kts	80	100	120	140	160
Angulo DES 3,0° FPM	425'	531'	637'	743'	849'
MAPt en RW02					

DASA / SECCION IAS-MAP