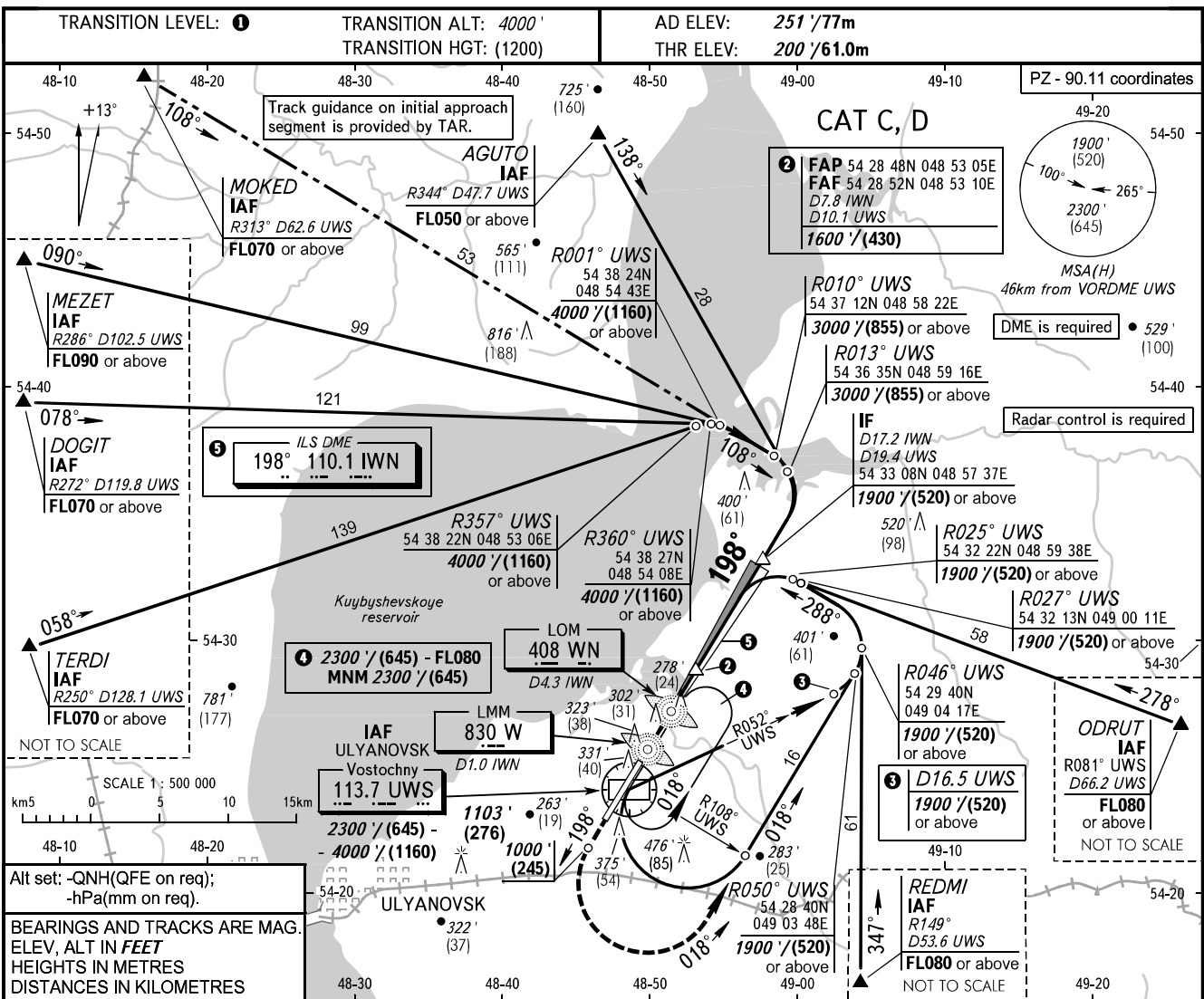


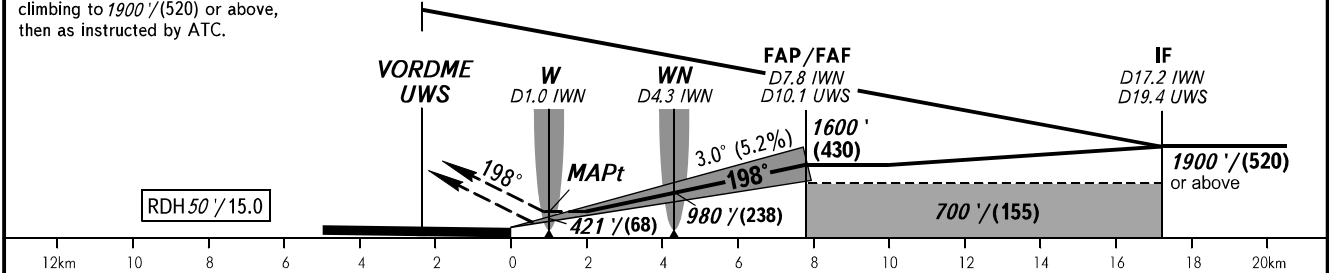
**INSTRUMENT
APPROACH
CHART - ICAO**

VOSTOCHNY TOWER 124.200

**ULYANOVSK, RUSSIA
VOSTOCHNY
ILS X CAT I, LOC X RWY 20**



MISSED APPROACH Climb straight ahead to 1000'/(245), turn LEFT onto track 018° climbing to 1900'/(520) or above, then as instructed by ATC.	IAF 2300'/(645)- -4000'/(1160)	DME UWS	5.0	7.0	9.0
		ALTITUDE/HEIGHT	730'/(162)	1070'/(266)	1410'/(369)



OCA/H		A	B	C	D						
Straight-in	CAT I			357' (157') (48)	366' (166') (51)						
	LOC			550' (350') (110)	550' (350') (110)						
Circling				870' (600') (190)	950' (700') (215)						
GROUND SPEED		km/h	150	180	210	240	270	300	330	360	390
		kt	81	97	113	130	146	162	178	194	211
RATE OF DESCENT		m/s	2.2	2.6	3.0	3.5	3.9	4.3	4.8	5.2	5.6
		ft/min	427	512	597	682	768	853	938	1024	1109

- 1** TRANSITION LEVEL:
- FL050 when QNH is 977 hPa (733mm mercury column) or above;
- FL060 when QNH is less than 977 hPa (733mm mercury column).
- WARNING:**
1. Visual manoeuvring north-west of the aerodrome is PROHIBITED.
2. Zero range of DME IWN is indicated at RWY 20 THR.