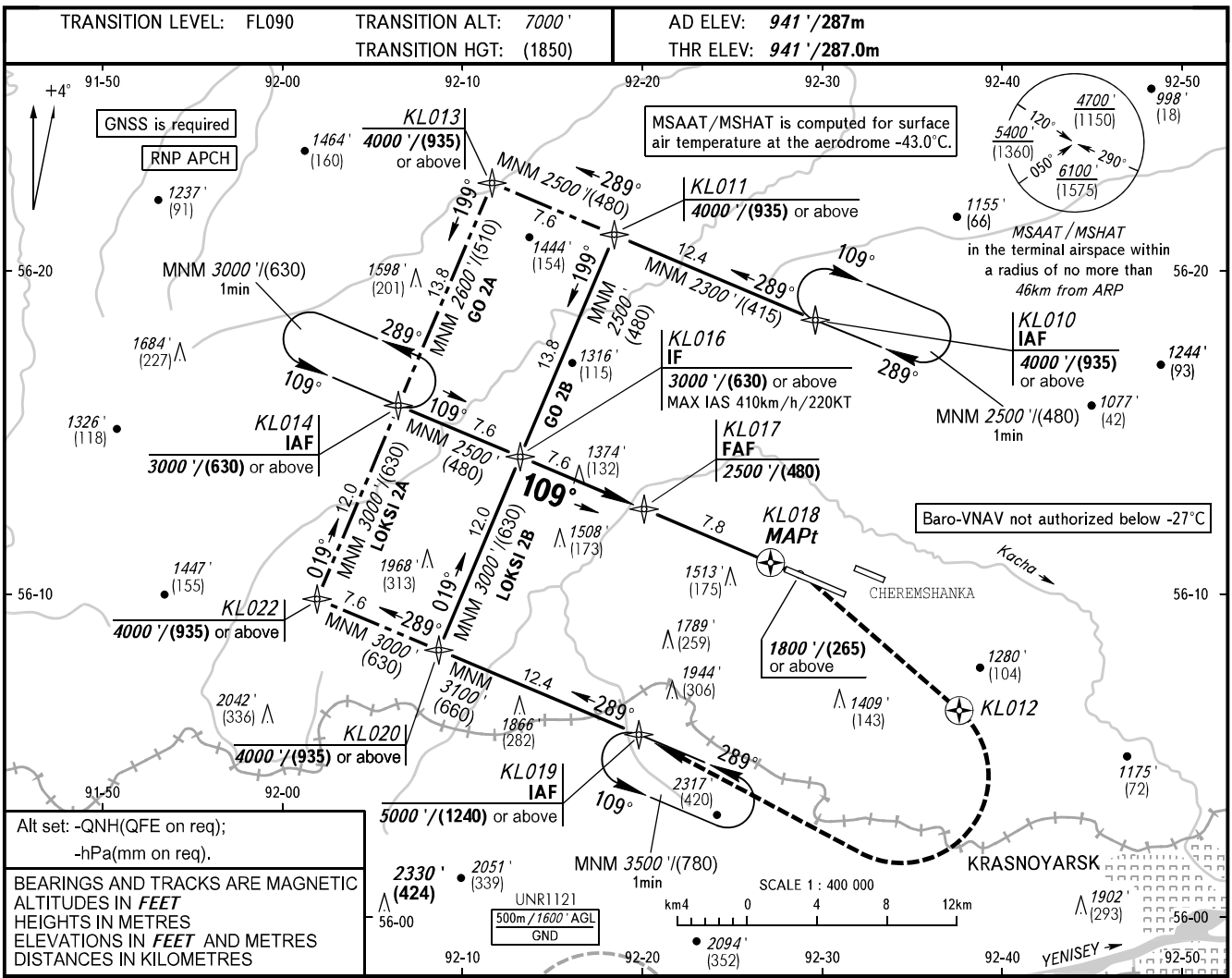


**INSTRUMENT
APPROACH
CHART - ICAO**

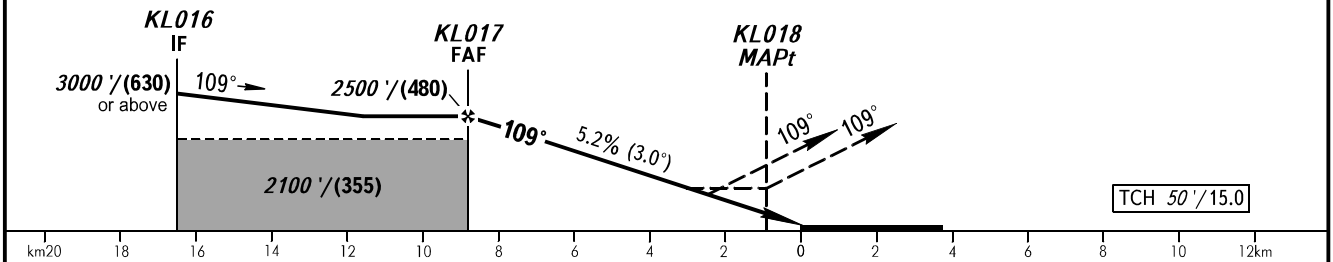
**KRASNOYARSK, RUSSIA
KRASNOYARSK
RNP RWY 11**

RADAR	122.000
TOWER	118.300



DIST to KL018	6.0	4.0	2.0
ALTITUDE/HEIGHT	2178' / (377)	1835' / (273)	1490' / (168)

MISSED APPROACH
Climb straight ahead to 1800' / (265) or above, then proceed climbing to KL012, turn RIGHT to KL019 climbing to 4000' / (935).



OCA(H)		A	B	C	D
Straight-in	LNAV	1510' (570') (175)	1510' (570') (175)	1510' (570') (175)	1510' (570') (175)
	LNAV/VNAV	1450' (510') (160)	1460' (520') (160)	1460' (520') (160)	1460' (520') (160)
Circling		1760' (820') (250)	1810' (870') (270)	2130' (1190') (365)	2190' (1250') (385)

WARNING:
1. RWY of KRASNOYARSK/Cheremshanka AD is located at 1800m north-east of the runway.
2. MAPt at KL018.
Timing not authorized for defining MAPt.

GROUND SPEED	km/h	150	180	210	240	270	300	330	360	390
	kt	81	97	113	130	146	162	178	194	211
RATE OF DESCENT	m/s	2.2	2.6	3.1	3.5	3.9	4.4	4.8	5.2	5.7
	ft/min	433	512	610	689	768	866	945	1024	1122

CHANGE: New chart