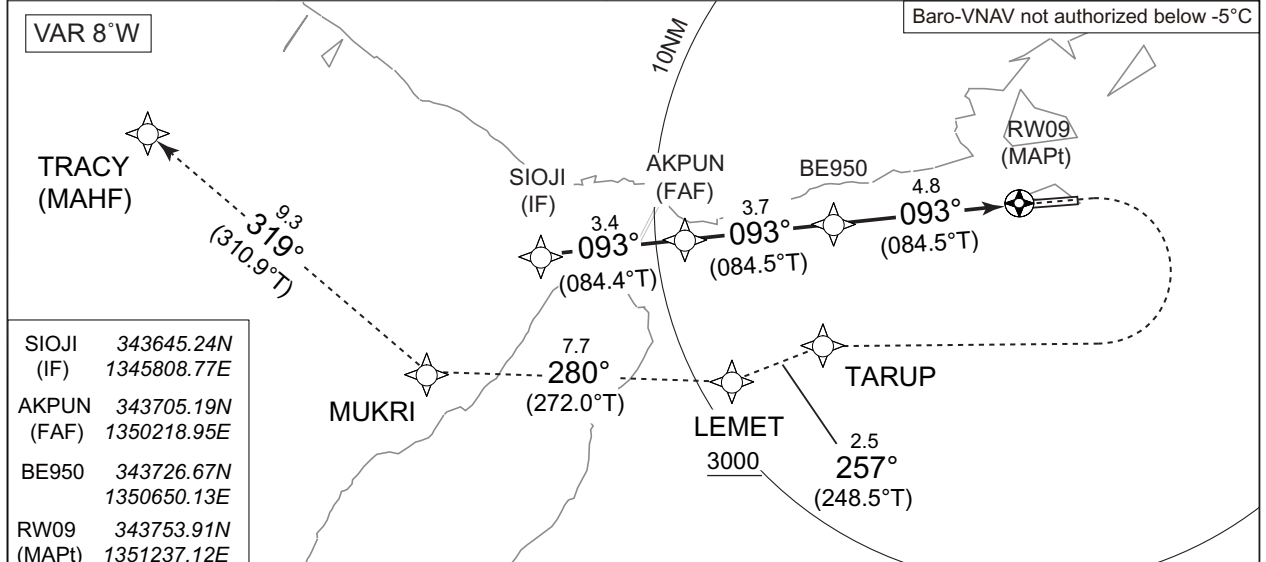


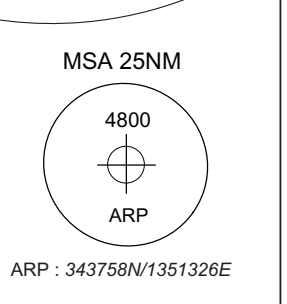
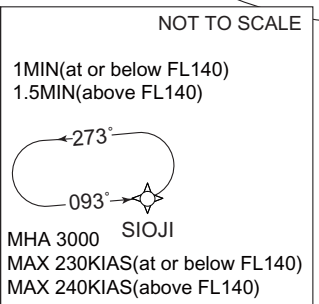
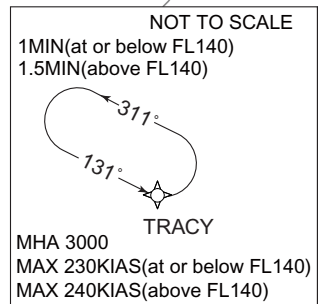
INSTRUMENT APPROACH CHART

RJBE / KOBE RNP RWY09

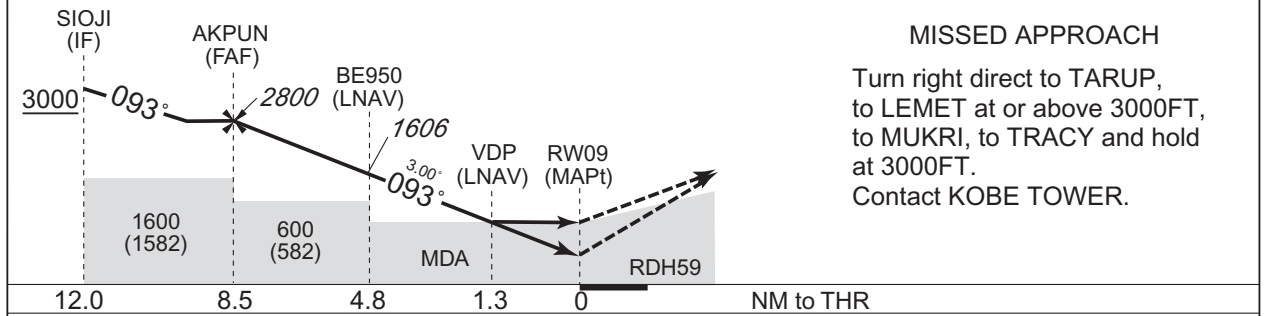
KANSAI RADAR 121.15 – 120.85 261.2	RNP APCH	KOBE TOWER 118.5 – 126.2	RADAR AVBL ATIS 128.075
--	----------	-----------------------------	----------------------------



SIOJI (IF)	343645.24N 1345808.77E
AKPUN (FAF)	343705.19N 1350218.95E
BE950	343726.67N 1350650.13E
RW09 (MAPt)	343753.91N 1351237.12E
TARUP	343423.61N 1350626.45E
LEMET	343329.67N 1350340.22E
MUKRI	343345.50N 1345419.20E
TRACY	343949.27N 1344547.82E



NM to Next Fix	FAF	8	7	6	5	4	3	2	MAPt
ALT (3.0° APCH Path)	2800	2628	2309	1991	1672	1354	1036	717	-



MISSED APPROACH

Turn right direct to TARUP, to LEMET at or above 3000FT, to MUKRI, to TRACY and hold at 3000FT. Contact KOBE TOWER.

Missed APCH climb gradient MNM 5.0%

MINIMA		THR elev. 21		AD elev. 18		
CAT	LNAV/VNAV		LNAV		CIRCLING	
	DA(H)	RVR/CMV	MDA(H)	RVR/CMV	MDA(H)	VIS
A	273 (252)	800	460 (442)	900	510 (492)	1600
B				1000		
C				1400		
D		1200		1400	580 (562)	3200

CHANGE : New PROC.

MINIMA with Missed APCH climb gradient of 2.5% are not established.
 Circling to SOUTH side of RWY only.

INTENTIONALLY LEFT BLANK