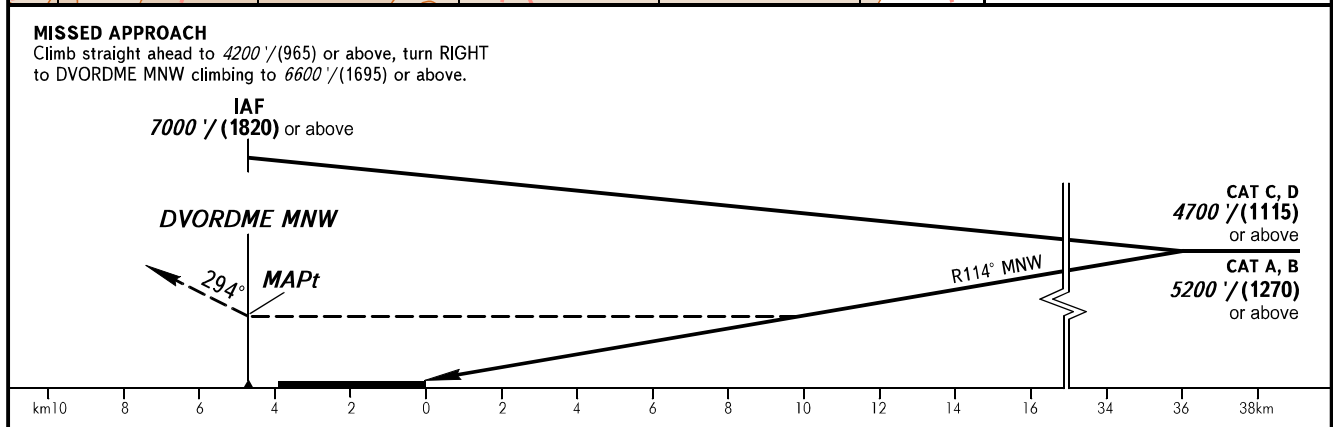
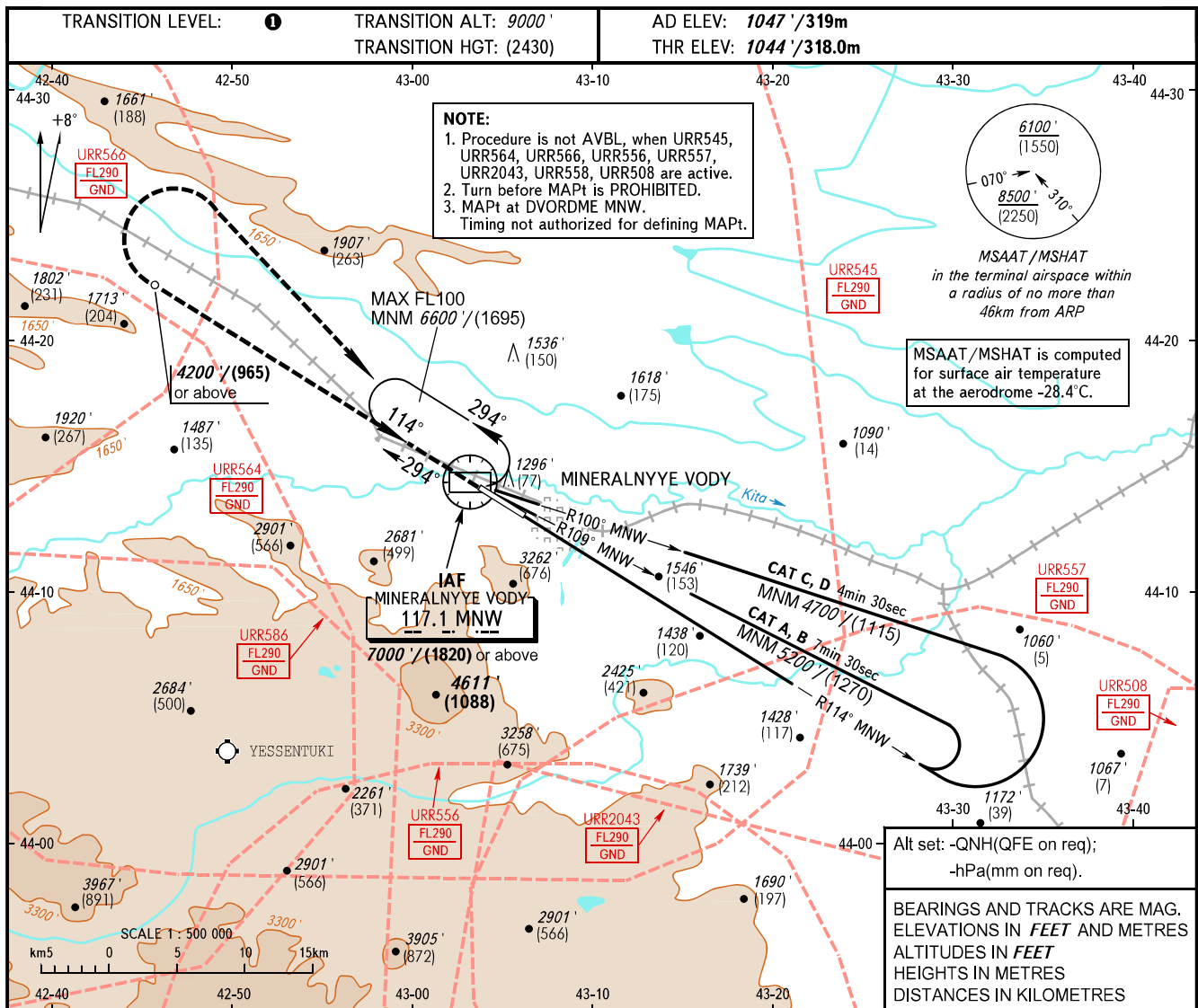


INSTRUMENT
APPROACH
CHART - ICAO

RADAR 120.700
START 128.000

MINERALNYYE VODY, RUSSIA
MINERALNYYE VODY
DVOR Y RWY 29



OCA(H)	A	B	C	D
Straight-in	2140' (1100') (340)	2140' (1100') (340)	2140' (1100') (340)	2140' (1100') (340)
Approach				
Circling	2140' (1100') (340)	2140' (1100') (340)	2180' (1140') (350)	2320' (1280') (395)

① **TRANSITION LEVEL:**
- FL100 when QNH is 1013 hPa (760mm mercury column) or above;
- FL110 when QNH is 977 hPa (733mm mercury column) or above, but less than 1013 hPa (760mm mercury column);
- FL120 when QNH is less than 977 hPa (733mm mercury column).

Visual manoeuvring south of the AD is PROHIBITED.

286°
123°

CHANGE: New chart