

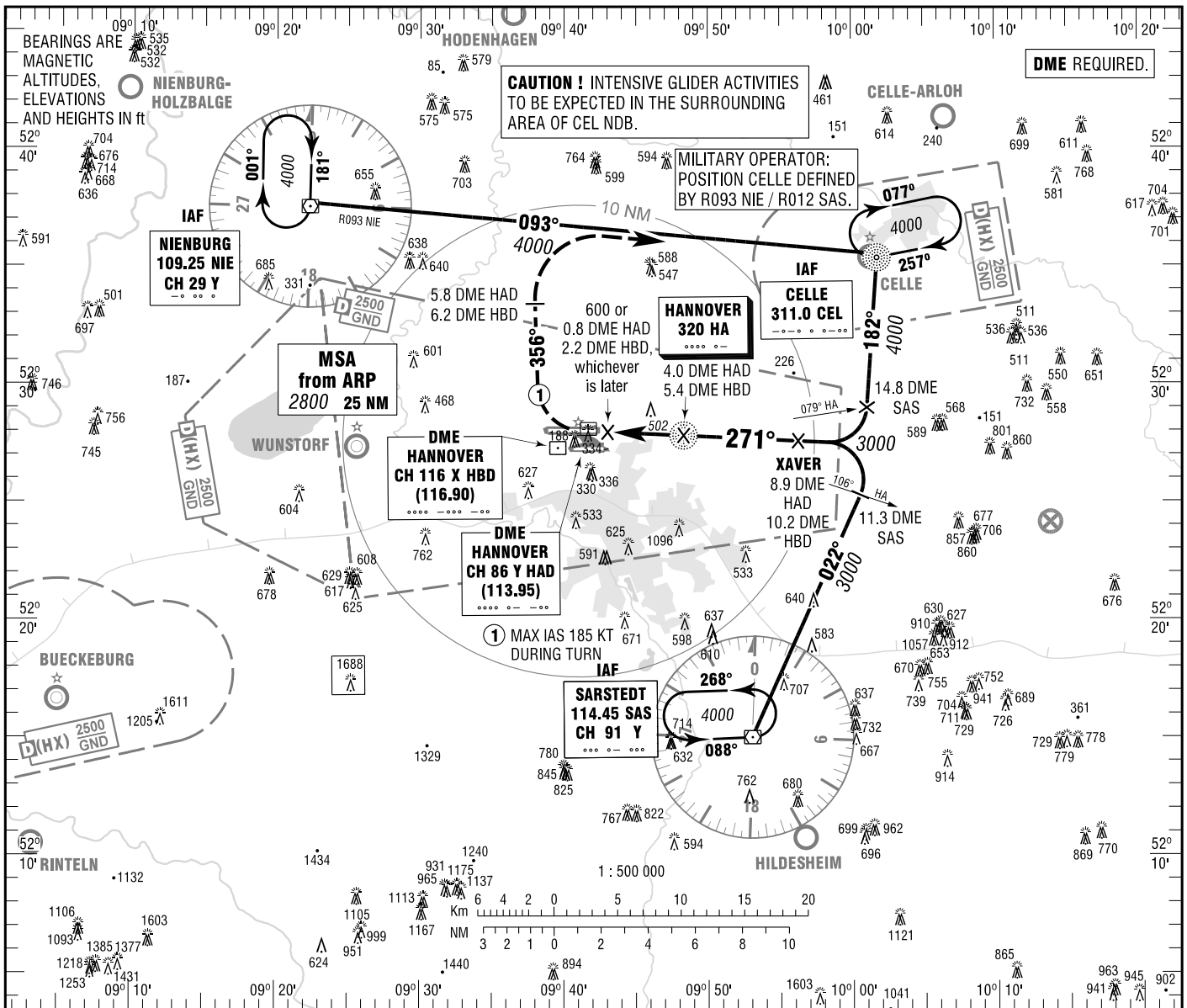
**INSTRUMENT
APPROACH
CHART - ICAO**

VAR 2° E

ELEV 183
OCH RELATED TO
THR 27R ELEV 169

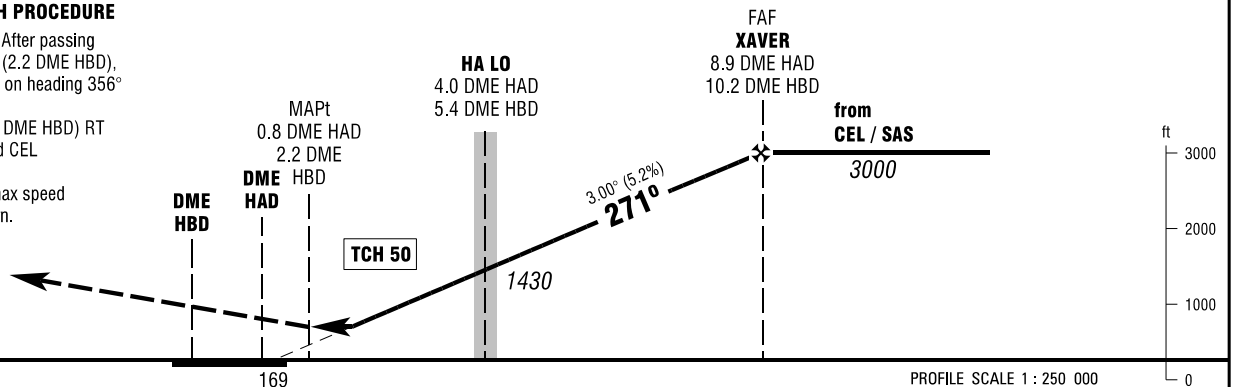
HANNOVER ATIS	136.575	HANNOVER TOWER	120.180
BREMEN RADAR	119.490	HANNOVER GROUND	121.955
HANNOVER ARRIVAL	119.605		

**HANNOVER
NDB
RWY 27R**



MISSED APPROACH PROCEDURE

Climb straight ahead. After passing 600 or 0.8 DME HAD (2.2 DME HBD), whichever is later, RT on heading 356° climbing max 3000.
At 5.8 DME HAD (6.2 DME HBD) RT on track 093° inbound CEL climbing 4000.
After 0.8 DME HAD max speed 185 KT IAS during turn.



	NM 6	5	4	3	2	1	0	1	2	3	4	5	6	7	8	9	10	11	12	13	14	NM
OCA (OCH)	A	B	C	D																		
NDB-DME	750 (580)	750 (580)	750 (580)	750 (580)																		

DME HAD	2	3	4	5	6	7	8	
DIST THR	1.8	2.8	3.8	4.8	5.8	6.8	7.8	
ALTITUDE	800	1120	1430	1750	2070	2390	2710	

TIMING NOT AUTHORIZED FOR DEFINING THE MAPt.

GS	kt	80	100	120	140	160	180
HA LO - 0.8 DME HAD (3.2 NM)	MIN:SEC	2:24	1:55	1:36	1:22	1:12	1:04
Rate of descent (5.2%)	ft / MIN	420	530	640	740	850	960

Correction: Callsign only.