

**PANS-OPS
 INSTRUMENT DEPARTURE CHART**

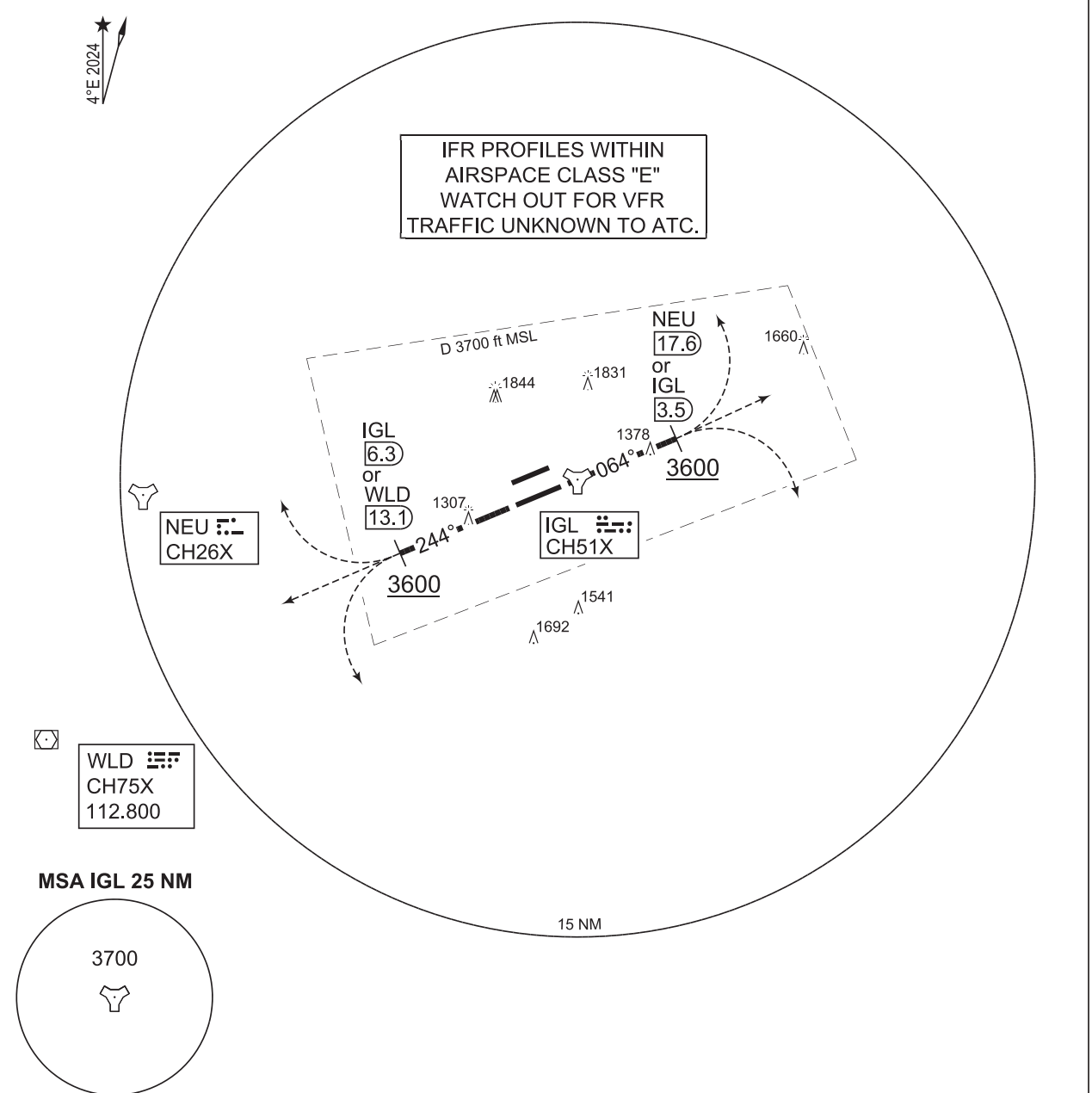
AD ELEV 1203

**SI 106 - 124
 INGOLSTADT/MANCHING (ETSI)**

INGO TOWER 376.800 125.255	INGO RADAR 282.000 120.605 125.580			MUENCHEN RADAR 242.200 VHF O/R				
INGO ATIS 118.865	RWY	from - to	60	120	180	240	300	Reason
	24L	DER - 3600 ft	608	1216	1824	2432	3040	ATC
	06R	DER - 3600 ft	608	1216	1824	2432	3040	ATC

NOTE:

a) SI 124: CHECK FOR CLOSE-IN OBSTACLE (BUILDING 327 M 221° BEYOND DER, 1243 FT MSL).



EMERG SAFE ALT 100 NM 13500 **TA 5000**

CHANGE: VAR (423/23)

SI 124 (RWY 24L)	- Climb on track 244° to IGL/6.3 DME or WLD/13.1 DME - Cross IGL/6.3 DME or WLD/13.1 DME at 3600 ft or above - Continue as cleared by ATC
SI 106 (RWY 06R)	- Climb on track 064° to IGL/3.5 DME or NEU/17.6 DME - Cross IGL/3.5 DME or NEU/17.6 DME at 3600 ft or above - Continue as cleared by ATC

ZentrLuftOp 22 FEB 2024

SI 106 - 124

48°42.94'N
 011°32'02"E

INGOLSTADT/MANCHING (ETSI)