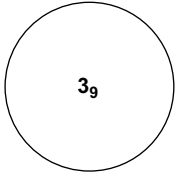
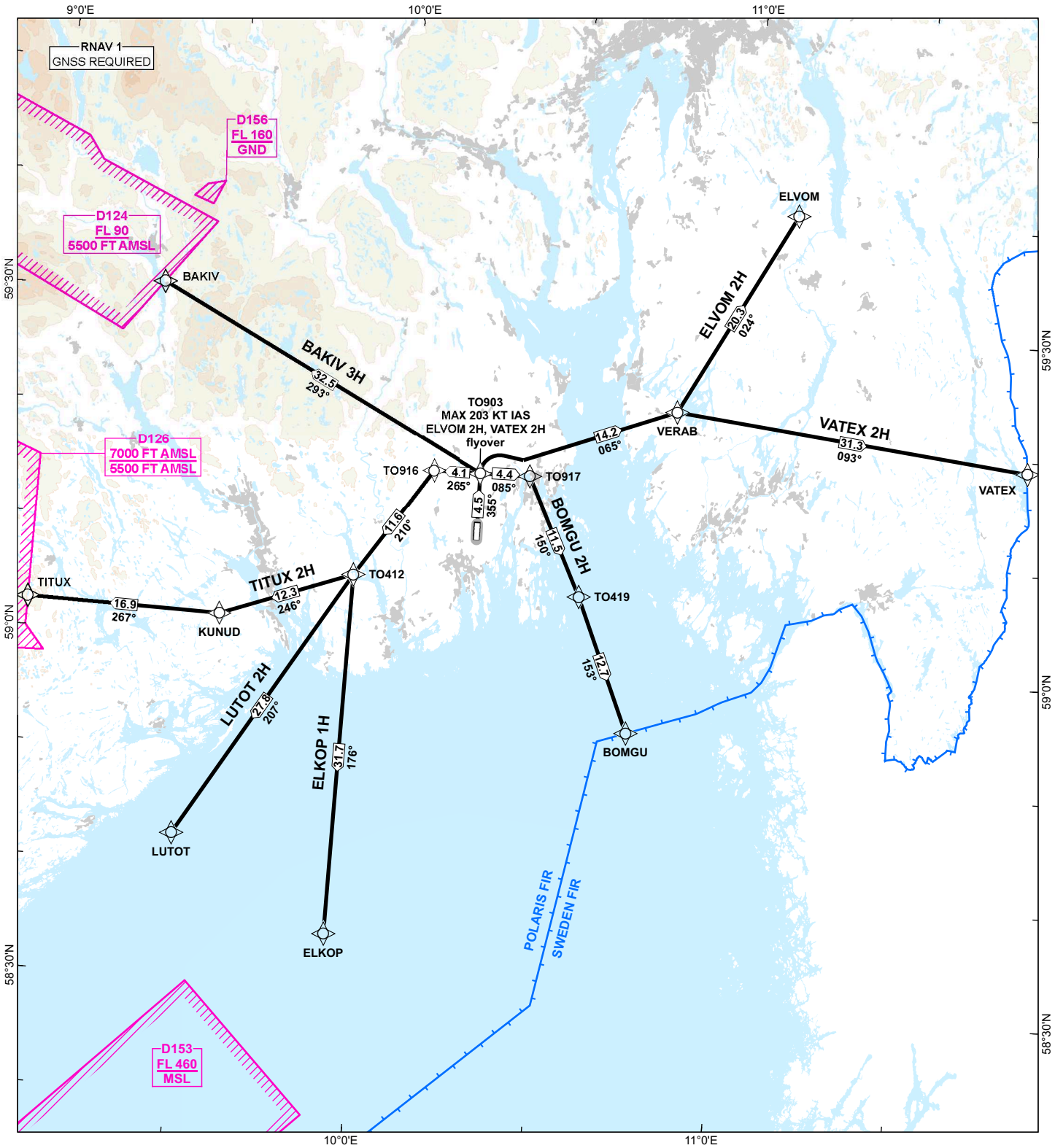


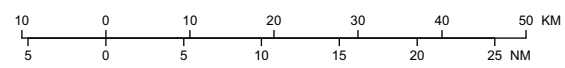
STANDARD DEPARTURE CHART - INSTRUMENT (SID) - ICAO

 <p>MSA 25 NM ARP</p>	ATIS: 119.080	<p>ALT AND ELEV ARE IN FT DIST IN NM</p>			<p>SANDEFJORD / TORP RNAV RWY 36</p>	
	APP FARRIS: 134.055 124.355					
	TWR: 118.655	1:900 000	VAR 4° E (2020)	TA 7000		NORWAY
	GND: 126.180	<p>BAKIV 3H, BOMGU 2H, ELKOP 1H, ELVOM 2H, LUTOT 2H, TITUX 2H, VATEX 2H</p>				



ROUTE AND WAYPOINT DESCRIPTIONS ON THE SUCCEEDING PAGES

ATS AIRSPACE CLASSIFICATIONS: REF ENR 1.4
LEGEND: REF GEN 2.3



CHANGES: MAG VAR, FREQUENCIES, EDITORIALS.