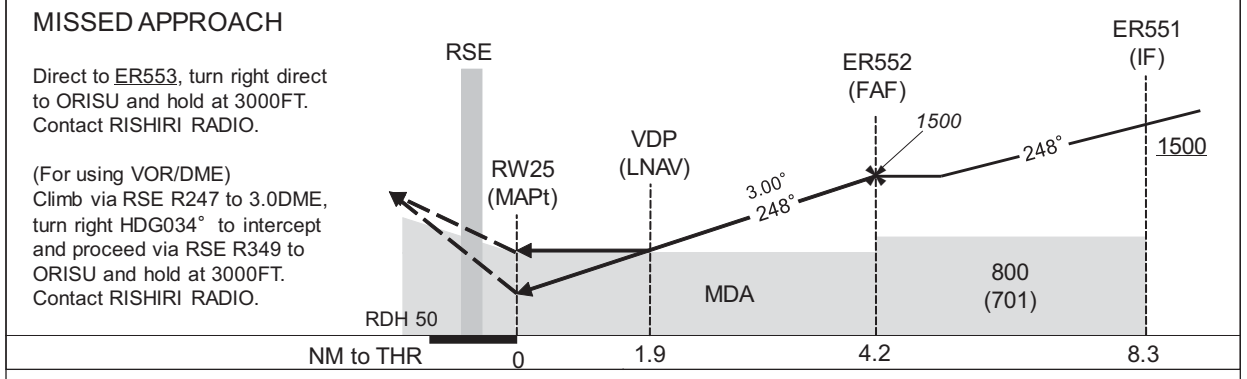
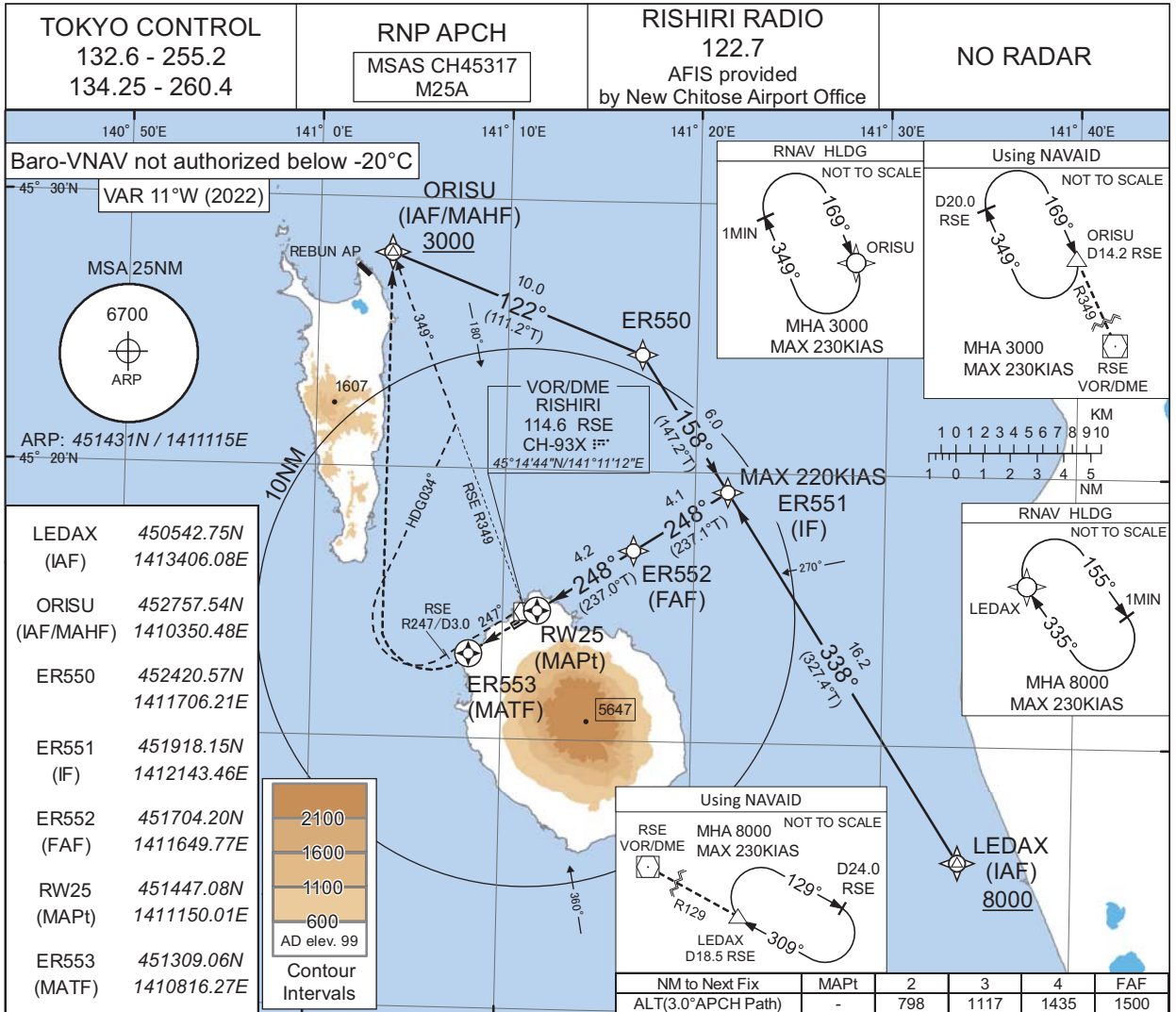


INSTRUMENT APPROACH CHART

RJER / RISHIRI

RNP RWY25



CAT	LPV		LNAV/VNAV		LNAV		CIRCLING	
	DA(H)	CMV	DA(H)	CMV	MDA(H)	CMV	MDA(H)	VIS
A	397(285)	800	730(618)	1000	730(631)	1000	730(631)	1600
B	407(295)			1200		1200		2400
C	417(305)	1000	-	-	-	-	-	-
D	-	-	-	-	-	-	-	-

Circle to NORTH side of RWY only.

CHANGE : ATC call sign.

INSTRUMENT APPROACH CHART

RJER / RISHIRI

RNP RWY25

**FAS DATA BLOCK**

Operation type	0	LTP/FTP ellipsoidal height	+00632
SBAS service provider identifier	2	FPAP latitude	451415.3275N
Airport identifier	RJER	FPAP longitude	1411040.7490E
Runway	25	Threshold crossing height	00015.0
Approach performance designator	0	TCH units selector	1
Route indicator		Glide path angle	03.00
Reference path data selector	0	Course width at threshold	105.00
Reference path ID	M25A	∠ length offset	0000
LTP/FTP latitude	451447.0530N	HAL	40.0
LTP/FTP longitude	1411149.9960E	VAL	50.0
CRC remainder	9A7FDBC0		

**Required additional data**

LTP/FTP orthometric height	34.5
----------------------------	------

CHANGE : Description of FAS DATA BLOCK ITEM(CRC remainder).