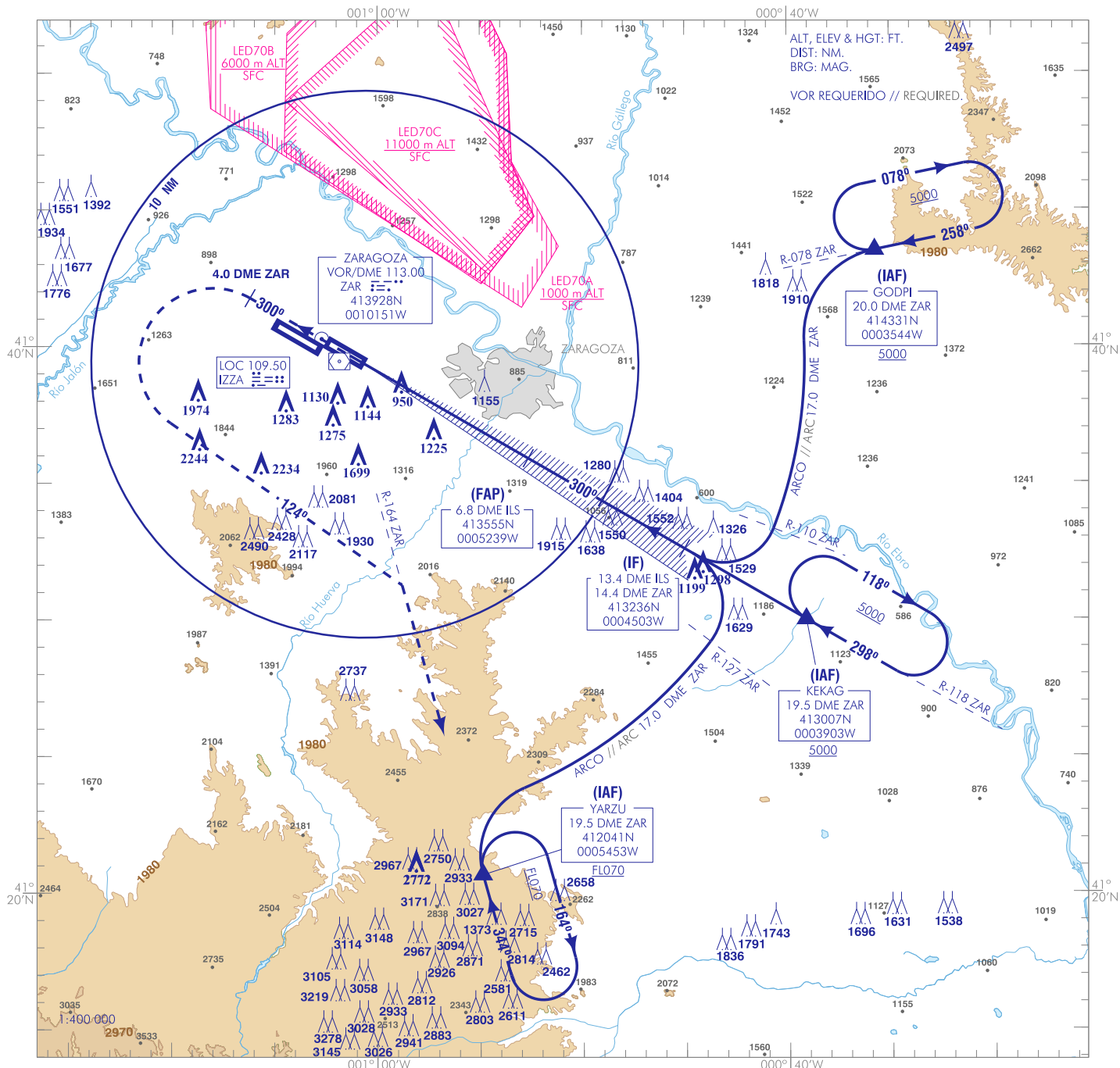


CARTA DE APROXIMACIÓN
POR INSTRUMENTOS-MIPS

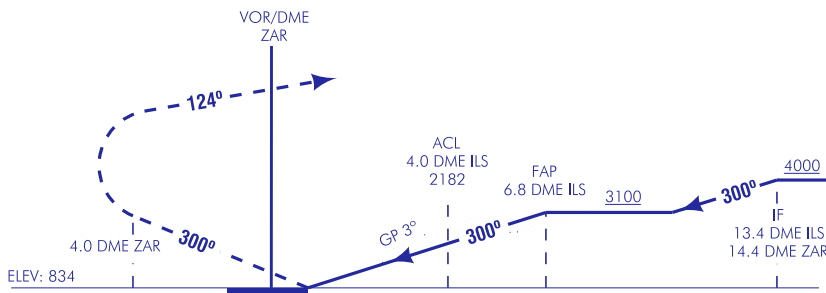
ELEV AD
862 ft
VAR 0° (2020)

APP 119.305 C
296.750 MHz
TWR 122.105 C
292.200 MHz
GCA 130.025 MHz

ZARAGOZA
ILS/DME CAT II & III
RWY 30R



FRUSTRADA: ASCENDER DIRECTO A 4.0 DME ZAR. VIRAR A LA IZQUIERDA Y ASCENDER EN RUMBO MAGNÉTICO 124° HASTA INTERCEPTAR R-164 ZAR, CONTINUAR ASCIENDIENDO A FLO70 DIRECTO A YARZU PARA INTEGRARSE A LA ESPERA.
MISSED APCH: CLIMB STRAIGHT AHEAD TO 4.0 DME ZAR. TURN LEFT AND CLIMB ON MAGNETIC HEADING 124° TO INTERCEPT R-164 ZAR CLIMB STRAIGHT TO FLO70 DIRECT TO YARZU AND HOLD.

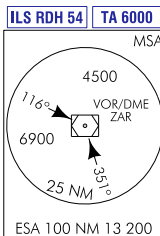


CAMBIOS: RENUMERACIÓN, OBSTÁCULOS.
CHANGES: RENUMBERING, OBSTACLES.

| HGT REF ELEV THR RWY 30R | | | | |
|--------------------------|---------------|---------------|---------------|-----------------|
| CAT | A | B | C | D |
| S-ILS | 1247-1.2* | | 1247-1.6* | |
| CAT I 2.5% | 413 (500-1.2) | | 413 (500-1.6) | |
| S-ILS | 1034-0.8* | | 1034-1.2* | |
| CAT I 3.5% | 200 (200-0.8) | | 200 (200-1.2) | |
| S-ILS | | 1127-1.2* | | |
| CAT II 2.5% | | 293 (300-1.2) | | |
| S-ILS | | 934-0.4* | 948-1.2 | |
| CAT II 3.5% | | 100 (100-0.4) | 114 (200-1.2) | |
| S-ILS | | 1610-2.0 | 2600-4.8 | |
| CIRCUITO | 1500-1.6 | 640 (700-1.6) | 750 (800-2.0) | 1740 (1800-4.8) |
| CIRCUITO | | | | |

| GS | kt | 80 | 100 | 120 | 140 | 160 | 180 |
|-----------|--------|-----|-----|-----|-----|-----|-----|
| FAF-THR: | min:s | | | | | | |
| FAF-MAPT: | ft/min | | | | | | |
| ROD: 5.2% | ft/min | 425 | 531 | 637 | 743 | 849 | 955 |

| ALT/HGT DME (ILS) FNA | | | | | | | | | | | | |
|-----------------------|----|----|----|---|---|---|--------|--------|--------|--------|-------|---|
| 13 | 12 | 11 | 10 | 9 | 8 | 7 | 6 | 5 | 4 | 3 | 2 | 1 |
| | | | | | | | 2840 | 2510 | 2190 | 1860 | 1540 | |
| | | | | | | | (2000) | (1670) | (1350) | (1020) | (700) | |



ZARAGOZA AD

REQUISITOS DE LA BASE DE DATOS AERONÁUTICA
 AERONAUTICAL DATABASE REQUIREMENTS

PROCEDIMIENTOS DE APROXIMACIÓN POR INSTRUMENTOS // INSTRUMENT APPROACH PROCEDURES

ILS/DME RWY 30R

| PUNTO POINT | LAT | LONG | AZIMUT VERDADERO TRUE BEARING | DISTANCIA DME DME DISTANCE (NM) |
|---|-----------|------------|----------------------------------|---------------------------------------|
| VOR/DME ZAR | 413928.4N | 0010151.1W | - | - |
| GODPI (IAF) | 414331.0N | 0003544.0W | 078.19° (ZAR) | 20.0 DME ZAR |
| YARZU (IAF) | 412041.0N | 0005453.0W | 164.38° (ZAR) | 19.5 DME ZAR |
| KEKAG (IAF) | 413006.7N | 0003903.3W | 118.55° (ZAR) | 19.5 DME ZAR |
| IF | 413235.8N | 0004503.0W | 118.51° (ZAR) | 14.4 DME ZAR |
| FAP | 413554.7N | 0005238.8W | 120.01° (LOC IZZA) | 6.8 DME ILS |
| Aproximación final de precisión - Pendiente (Ángulo de descenso) // Precision final approach - Slope (Descent angle) | | | | 5.24% (3.01°) |