

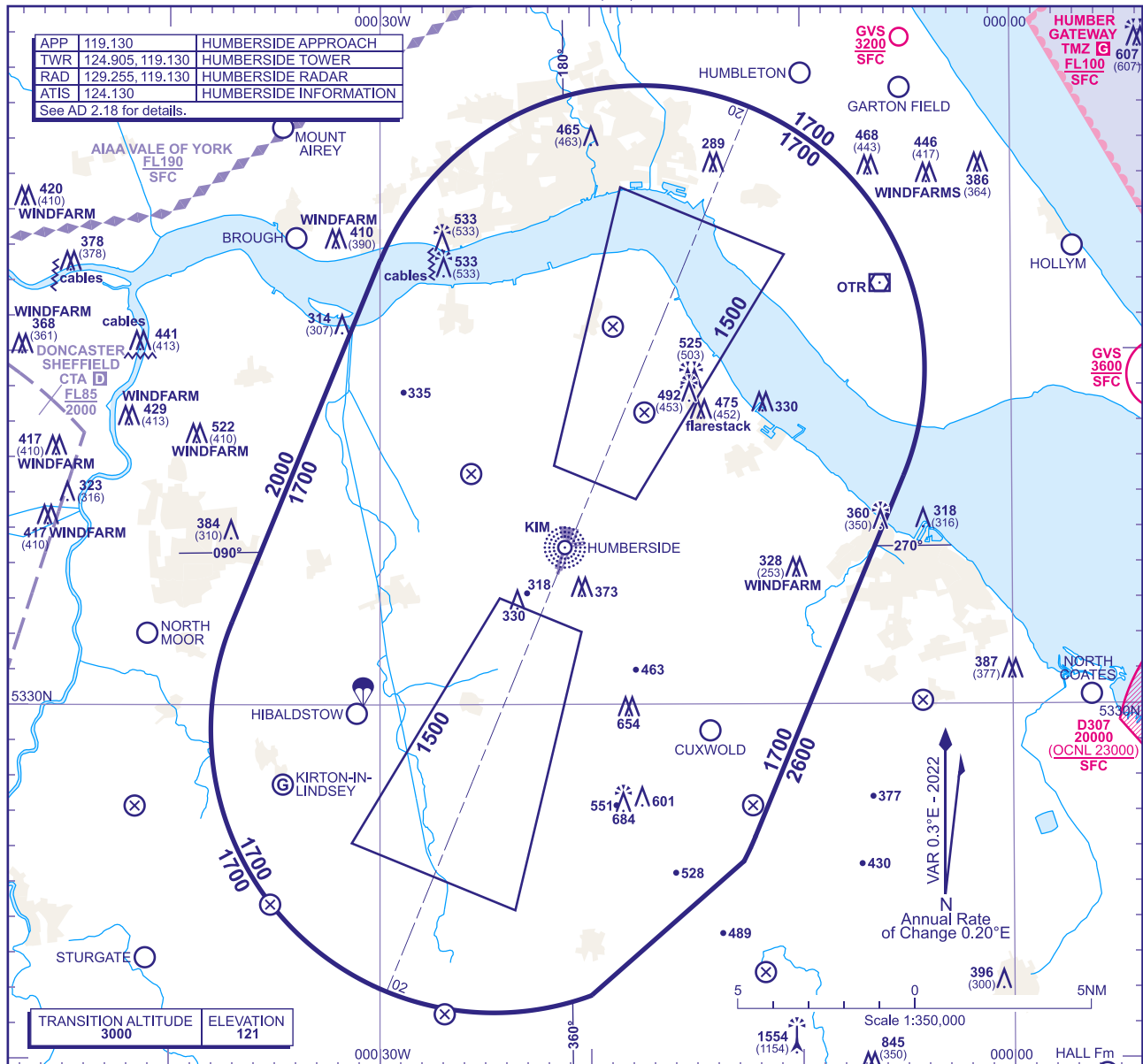
# ATC SURVEILLANCE MINIMUM ALTITUDE CHART - ICAO

BEARINGS, TRACKS AND RADIALS ARE MAGNETIC  
 ELEVATIONS IN FEET AMSL 1554  
 HEIGHTS IN FEET AGL (1154)

## HUMBERSIDE

APP	119.130	HUMBERSIDE APPROACH
TWR	124.905, 119.130	HUMBERSIDE TOWER
RAD	129.255, 119.130	HUMBERSIDE RADAR
ATIS	124.130	HUMBERSIDE INFORMATION

See AD 2.18 for details.



### MINIMUM INITIAL ALTITUDE

Within the ATC Surveillance Minimum Altitude area the minimum initial altitude to be allocated by the approach surveillance controller is **1700** in the sector defined by the lateral limits; 533220N 0003701W - 534233N 0003000W thence clockwise by an arc of a circle radius 8NM centred on 533930N 0001733W to 533627N 0000508W - 532616N 0001214W thence clockwise by an arc of a circle radius 8NM centred on 532918N 0002436W to 532534N 0001247W - 532148N 0001959W thence clockwise by an arc of a circle radius 8NM centred on 532918N 0002436W to 533220N 0003701W.

### OUTSIDE THE DESIGNATED ATC SURVEILLANCE MINIMUM ALTITUDE AREA

The minimum altitude to be allocated by the approach surveillance controller will be either the Minimum Sector Altitude, or **1000** above any fixed obstacles:

- within 5NM of the aircraft\*, and
- within the sector 15NM ahead of and within 20° either side of the aircraft's track\*.

\*When the aircraft is within 15NM of the radar antennae, the 5NM in a) and the 15NM in b) may be reduced to 3NM and 10NM respectively.

### LOSS OF COMMUNICATION PROCEDURES

#### Initial Approach

Continue visually or by means of an appropriate approved final approach aid. If not possible proceed at **3000**, or last assigned level if higher to **NDB(L) KIM†**.

#### Intermediate and Final Approach

Continue visually or by means of an appropriate final approach aid. If not possible follow the Missed Approach Procedure to **NDB(L) KIM†**.

† In all cases where the aircraft returns to the holding facility the procedure to be adopted is the Radio Failure Procedure detailed at ENR 1.1.3.

### GENERAL INFORMATION

- Levels shown are based on QNH.
- Only significant obstacles and dominant spot heights are shown.
- The minimum levels shown within the ATC Surveillance Minimum Altitude Area are in conformance with the Standard European Rules of the Air - SERA.5015.
- Minimum Sector Altitudes are based on obstacles and spot heights within 25NM of **NDB(L) KIM**.
- Controlled airspace with a base in excess of **5000** or **FL55**, as appropriate, is not shown.
- The ATC Surveillance service is provided by Primary and/or Secondary Radar equipment.
- This chart may only be used for cross-checking of altitudes assigned when in receipt of an ATC Surveillance service.**
- When vectoring an aircraft within the Final Approach Vectoring Area descent clearance below the SMAA to the FAVA altitude may only be issued if the aircraft is either established on the final approach track or on an intercept of 40° or less, and in the case of instrument approaches other than SRA is cleared to intercept the final approach track.**

CHANGE (3/25): EGR313 REMOVED.