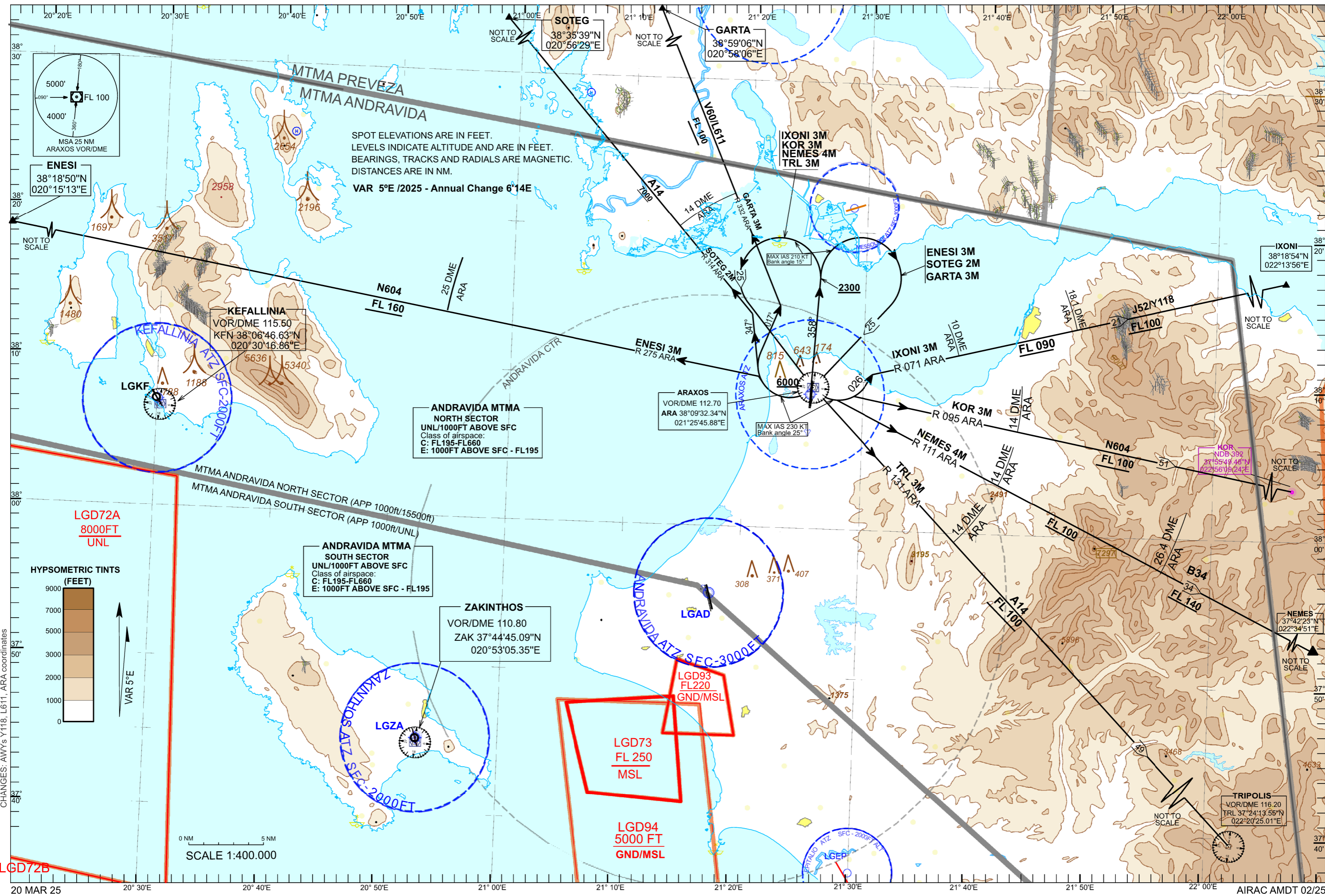


TRANSITION ALTITUDE
8000 ft

ARAXOS TWR 125.250
ANDRAVIDA APP 121.125



CHANGES: AWY's Y118, L611, ARA coordinates

LGD72B

ARAXOS AIRPORT

SIDs RWY 36L

ARA VOR/DME

GENERAL

1. For these SIDs a visual climb up to 300 ft is required.
2. When for these SIDs an altitude higher than the transition altitude is designated, then ATC unit shall specify an equivalent flight level.

DESIGNATOR	DESCRIPTION	MAX IAS /BANK ANGLE	MINIMUM CLIMB GRADIENT (PDG).	ALTITUDES
ENESI 3M	Climb straight ahead. At 2300 ft turn right and proceed to ARA. At ARA turn right, intercept and follow R 275 ARA and join AWY N604 to ENESI.	210KT until turn at 2300 ft completed, 15° Bank Angle. 230KT until turn at ARA completed, 25° Bank Angle.	5.3% (322 ft/NM) up to FL 160.	Cross ARA at 6000ft or above. Cross R 275 ARA/25 DME fix at FL 160 or above.
SOTEG 2M	Climb straight ahead. At 2300 ft turn right and proceed to ARA. At ARA turn right to track 347°, intercept and follow R 314 ARA and join AWY A14 to SOTEG.	210KT until turn at 2300 ft completed, 15° Bank Angle. 230KT until turn at ARA completed, 25° Bank Angle.	5.3% (322 ft/NM) up to 7000ft.	Cross ARA at 6000ft or above. Cross R 314 ARA/14 DME fix at 7000ft or above.
GARTA 3M	Climb straight ahead. At 2300 ft turn right and proceed to ARA. At ARA turn right to track 017°, intercept and follow R 332 ARA and join AWY V60/L611 to GARTA.	210KT until turn at 2300 ft completed, 15° Bank Angle. 230KT until turn at ARA completed, 25° Bank Angle.	5.3% (322 ft/NM) up to FL 100.	Cross ARA at 6000ft or above. Cross R 332 ARA/14 DME fix at FL 100 or above.
IXONI 3M	Climb straight ahead. At 2300 ft turn left and proceed to ARA. At ARA turn left to track 026°, intercept and follow R 071 ARA and join AWY J52/Y118 to IXONI.	210KT until turn at 2300 ft completed, 15° Bank Angle. 230KT until turn at ARA completed, 25° Bank Angle.	5.3% (322 ft/NM) up to FL 100.	Cross ARA at 6000ft or above. Cross R 071 ARA/10 DME fix at FL 090 or above. Cross R 071 ARA/18.1 DME fix at FL 100 or above .
KOR 3M	Climb straight ahead. At 2300 ft turn left and proceed to ARA. At ARA turn left, intercept and follow R 095 ARA, and join AWY N604 to KOR.	210KT until turn at 2300 ft completed, 15° Bank Angle. 230KT until turn at ARA completed, 25° Bank Angle.	5.3% (322 ft/NM) up to FL 100.	Cross ARA at 6000ft or above. Cross R 095 ARA/14 DME fix at FL 100 or above.
NEMES 4M	Climb straight ahead. At 2300 ft turn left and proceed to ARA. At ARA turn left, intercept and follow R 111 ARA and join AWY B34 to NEMES.	210KT until turn at 2300 ft completed, 15° Bank Angle. 230KT until turn at ARA completed, 25° Bank Angle.	5.3% (322 ft/NM) up to FL 140.	Cross ARA at 6000ft or above. Cross R 111 ARA/14 DME fix at FL 100 or above. Cross R 111 ARA/26.4 DME fix at FL 140 or above.
TRL 3M	Climb straight ahead. At 2300 ft turn left and proceed to ARA. After ARA intercept and follow R 131 ARA and join AWY A14 to TRL.	210KT until turn at 2300 ft completed, 15° Bank Angle. 230KT until turn at ARA completed, 25° Bank Angle.	5.3% (322 ft/NM) up to FL 100.	Cross ARA at 6000ft or above. Cross R 131 ARA/14 DME fix at FL 100 or above.