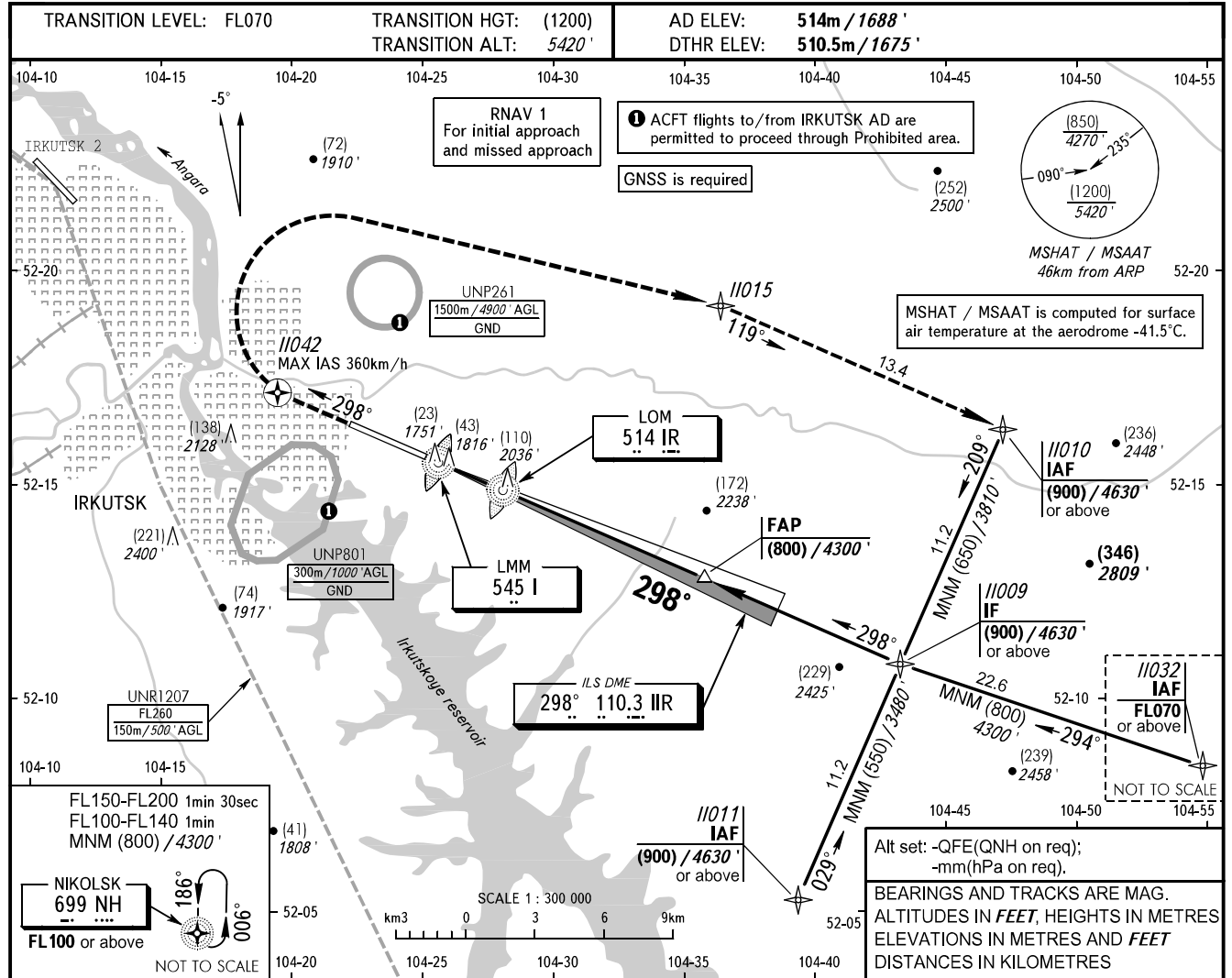


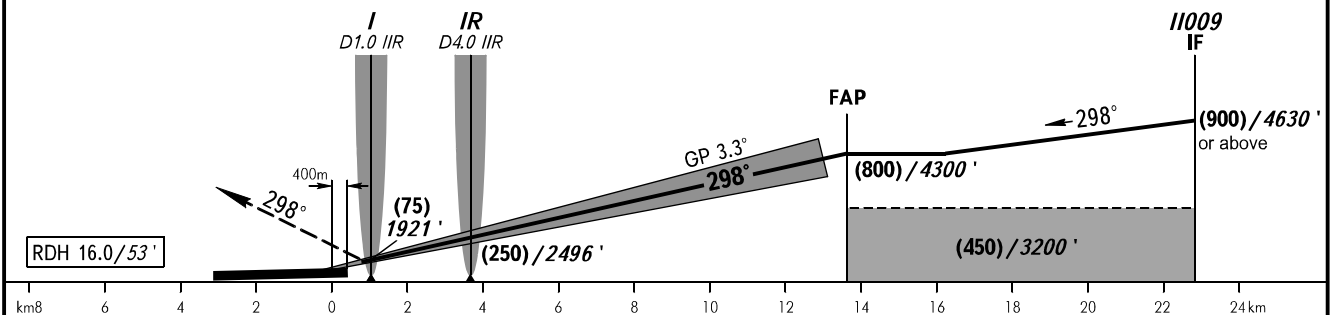
**INSTRUMENT
APPROACH
CHART - ICAO**

IRKUTSK, RUSSIA
IRKUTSK
ILS Y CAT I RWY 30

RADAR 119.300
TOWER 118.100



MISSED APPROACH
Climb on track 298° to 11042, turn RIGHT to 11015, then to 11010 climbing to (900) / 4630' or above.



OCA(H)		A	B	C	D	DL	
Straight-in Approach	CAT I	565 (54)	567 (56)	570 (59)	573 (62)	576 (65)	
		1854' (179')	1861' (186')	1871' (196')	1880' (205')	1889' (214')	
Circling		645 (130)	710 (200)	770 (255)	855 (340)	855 (340)	
		2110' (420')	2330' (650')	2530' (840')	2800' (1110')	2800' (1110')	
GROUND SPEED	km/h	150	180	210	240	270	300
RATE OF DESCENT	m/s	2.4	2.9	3.4	3.9	4.4	4.8

WARNING
Zero range of DME IIR is indicated at RWY 30 DTHR.

330	360	390	420	450
5.3	5.8	6.3	6.8	7.3