

ILS RWY 21L (CAT II)

TRAVIS AFB (KSUU)

LOC I-SUU 110.1	APCH CRS 215°	Rwy Idg 10,995 TDZE 58 Arprt Elev 63
---------------------------	-------------------------	---

[USAF]

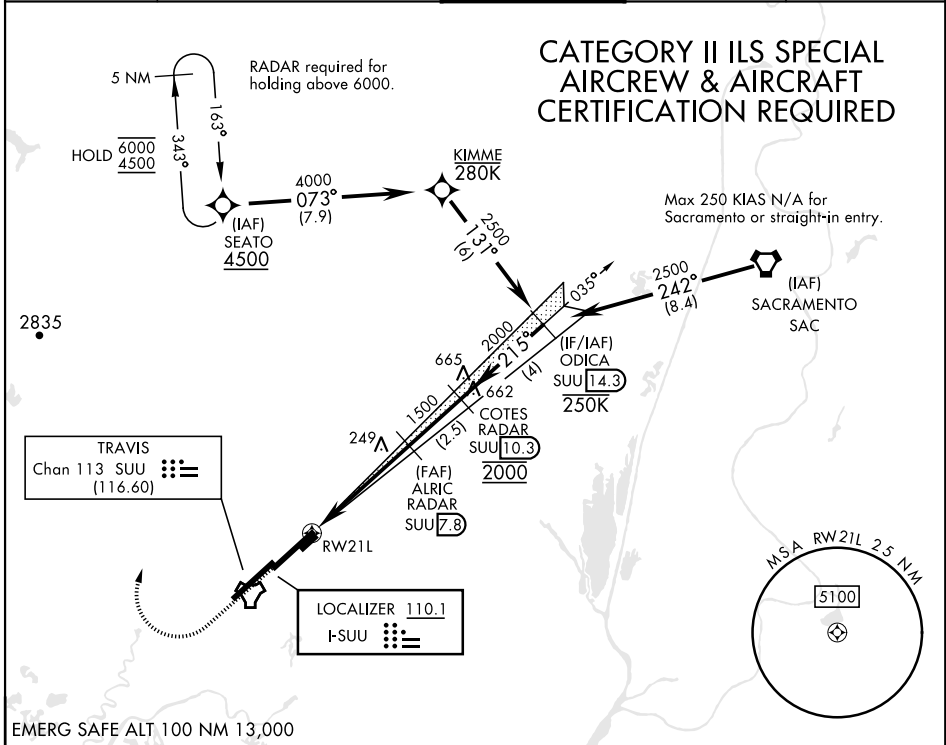
RNAV1 - GPS or RADAR required.

RADAR required for CAT E aircraft for full procedure off of SEATO.

ALSF-2

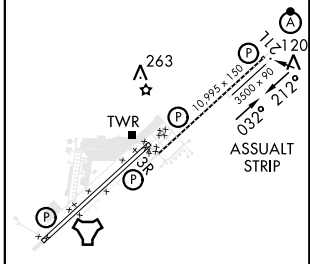
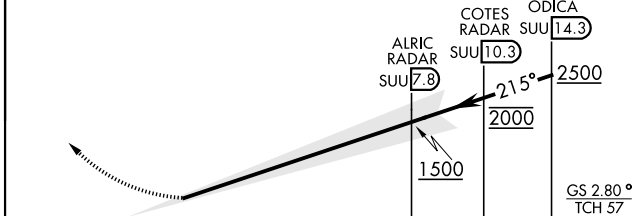
MISSED APPROACH: Climb to 2200 then climbing right turn to 4500 direct SEATO and hold, continue climb in hold to 4500.

ATIS 135.55 292.125	APP CON 119.9 322.325 (S) 126.6 281.45 (N)	TOWER 120.75 254.4	GND CON 121.8 289.4	CLNC DEL 127.55 335.8
-------------------------------	--	------------------------------	-------------------------------	---------------------------------



2200	4500	SEATO	VGSI and glidepath not coincident (VGSI Angle 2.80/TCH 75).
------	------	-------	---

ELEV 63	TDZE 58
---------	---------



CATEGORY	A	B	C	D	E
S-ILS 21L	RA 83/12		100	DA 158	

HIRL Rwy 3R-21L
MIRL Rwy 032° - 212°
TDZL/CL Rwy 3R, 21L

ILS RWY 21L (CAT II)

SW-2, 20 MAR 2025 to 17 APR 2025

SW-2, 20 MAR 2025 to 17 APR 2025