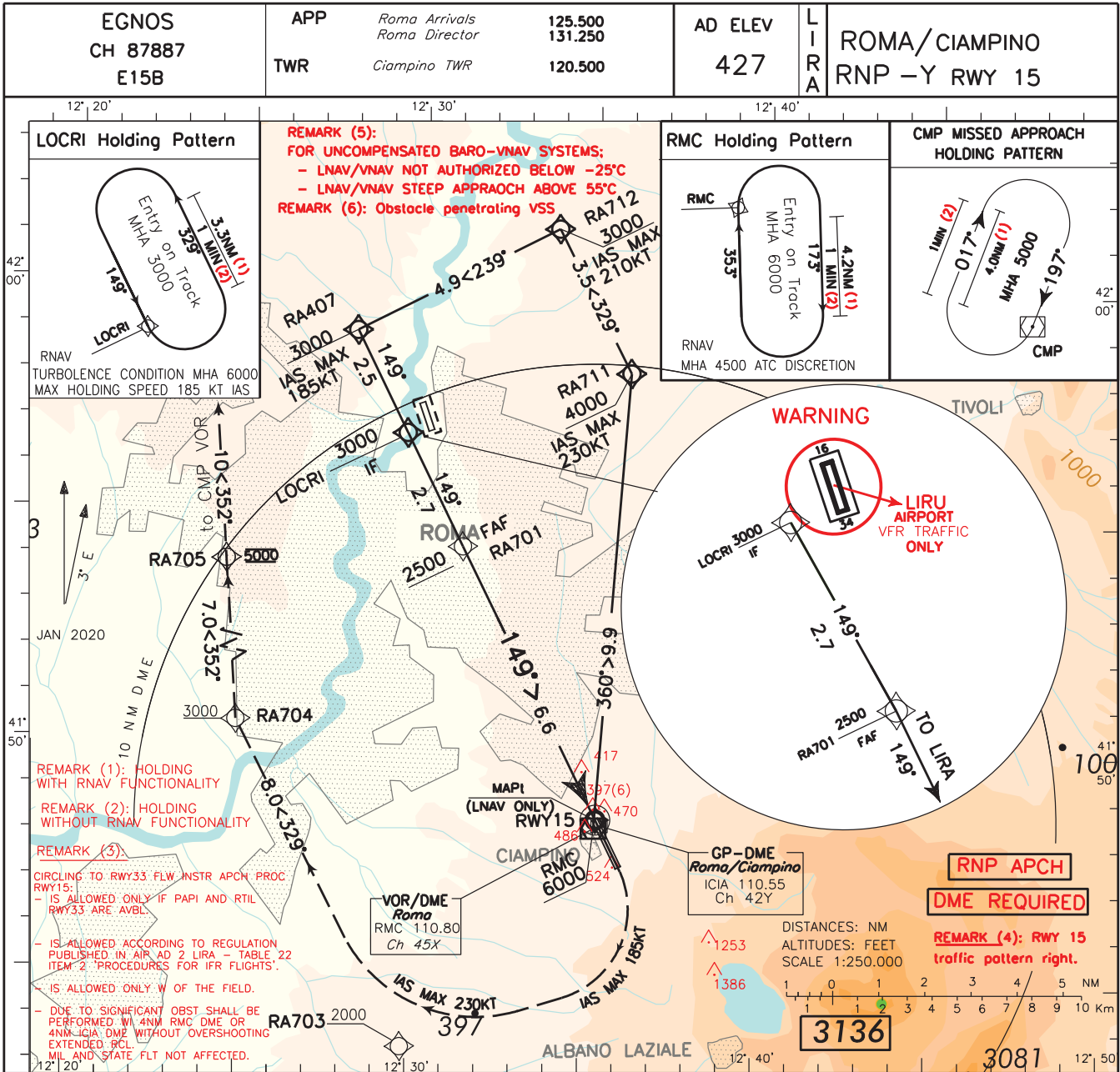


ICAO - INSTRUMENT APPROACH CHART

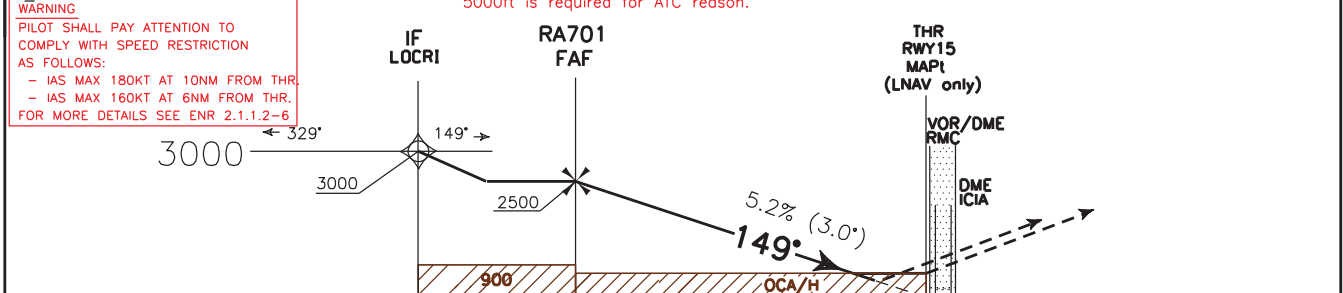
DOC.8168-ED.6-2014-AMDT 7

CHANGE: ROM VOR/DME RENAMED RMC



**TRANSITION ALT 6000** MISSED APPROACH: At RWY15, turn right (IAS MAX 185KT) direct to RA703 (2000FT or above) then turn right (IAS MAX 230KT) direct to RA704 (3000FT or above), then turn right to RA705 (5000FT steady), then CMP VOR to be reached at 5000FT.

**TCH 17.50 M**



16	15	14	13	12	11	10	9	8	7	6	5	4	3	2	1	0	1	2	3	4	5	6	7	
																THR ELEV 341								
																ICIA DME								ICIA DME
																RMC DME								RMC DME

STRAIGHT IN APPROACH	OCA (OCH)				CIRCLING SECTORS	GS	FT PER MIN	Dist THR	ALT(HGT)	MNM SECT ALT ARP
	A	B	C	D						
LPV	830 (489)	840 (499)	850 (509)	860 (519)		80	425	6 NM	2309(1968)	
LNAV/VNAV	830 (489)	840 (499)	850 (509)	860 (519)		100	530	5 NM	1990(1649)	
LNAV	920 (579)					120	635	4 NM	1672(1331)	
						140	740	3 NM	1354(1013)	
CIRCLING (3)	1100(673)	1500(1073)	1700(1273)	1830(1403)	160	850	2 NM	1035(694)		