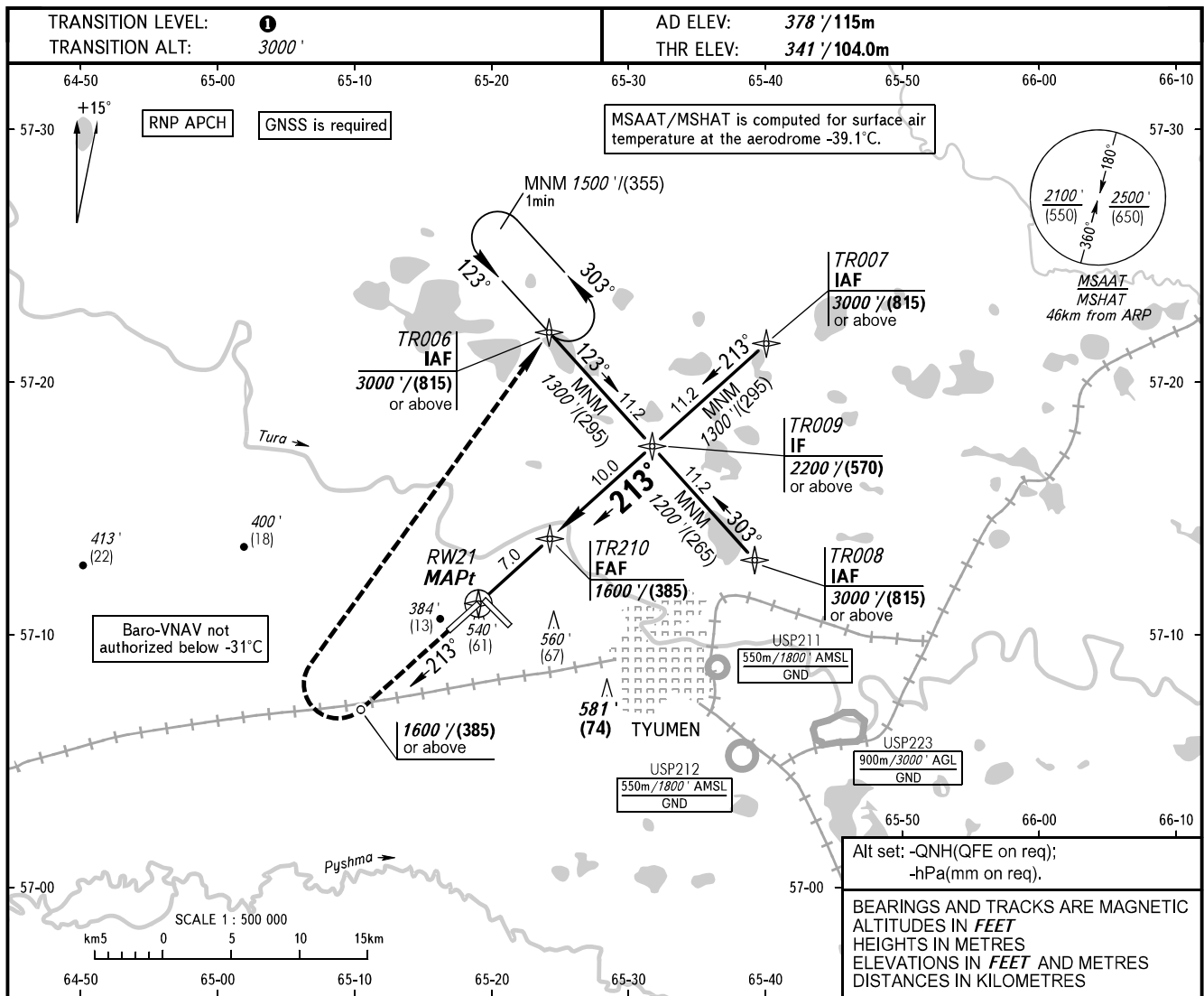


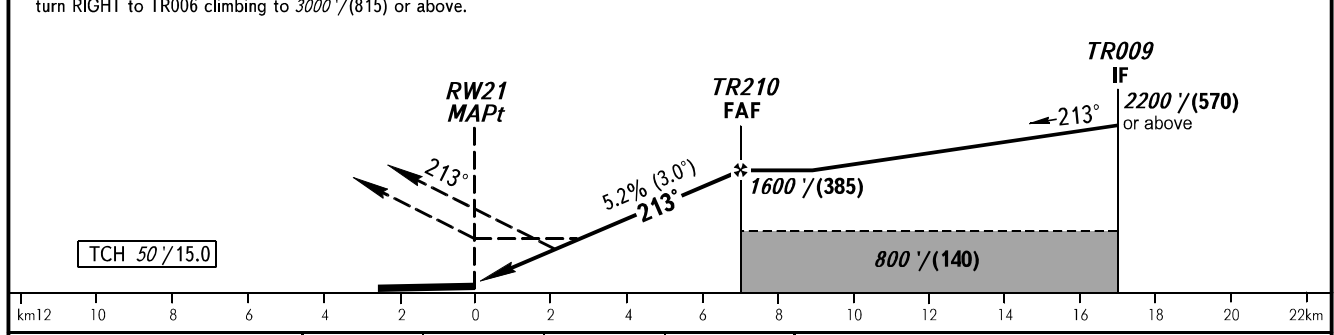
**INSTRUMENT  
APPROACH  
CHART - ICAO**

**TYUMEN, RUSSIA  
ROSHCHINO  
RNP RWY 21**

RADAR	126.100
START	118.200



<b>MISSED APPROACH</b> Climb on track 213° to 1600'/(385) or above, turn RIGHT to TR006 climbing to 3000'/(815) or above.	DIST to RW21	2.0	4.0	6.0
	ALTITUDE/HEIGHT	736'/(121)	1079'/(225)	1423'/(330)



OCA(H)		A	B	C	D	<b>① TRANSITION LEVEL:</b> - FL040 when QNH is 1013 hPa (760mm mercury column) or above; - FL050 when QNH is 977 hPa (733mm mercury column) or above, but less than 1013 hPa (760mm mercury column); - FL060 when QNH is less than 977 hPa (733mm mercury column). <b>WARNING</b> Turn before passing MAPt is PROHIBITED.				
Straight-in	<b>LNAV</b>	780' (440') (135)	780' (440') (135)	780' (440') (135)	780' (440') (135)					
	<b>LNAV/VNAV</b>	670' (330') (105)	690' (350') (110)	700' (350') (110)	710' (360') (110)					
Circling		840' (460') (145)	870' (500') (155)	970' (600') (185)	1070' (690') (215)					
GROUND SPEED	km/h	150	180	210	240	270	300	330	360	390
	kt	81	97	113	130	146	162	178	194	211
RATE OF DESCENT	m/s	2.2	2.6	3.1	3.5	3.9	4.4	4.8	5.2	5.7
	ft/min	433	512	610	689	768	866	945	1024	1122