

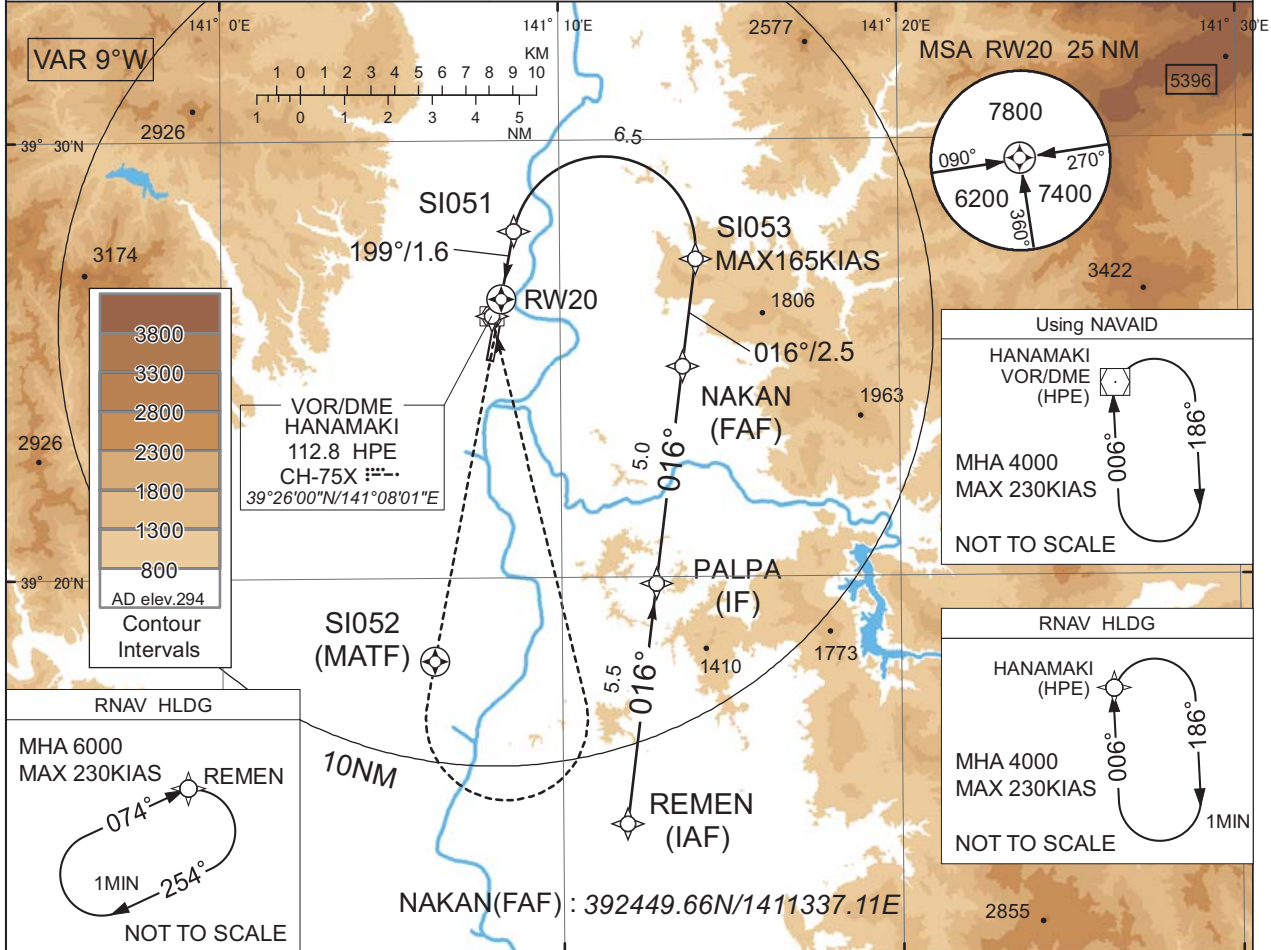
INSTRUMENT APPROACH CHART

RJSI / HANAMAKI

RNP Y RWY20(AR)

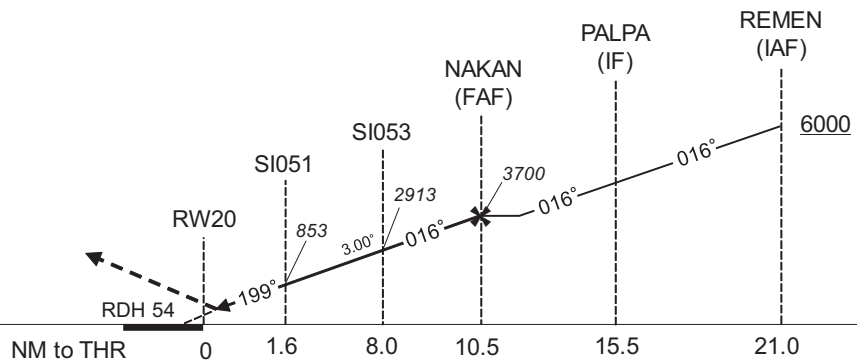
SHIRAKAMI APP 119.25 - 315.3 - 120.65	RNP AR RF required.	HANAMAKI RADIO 118.2 - 126.2	RADAR AVBL
--	------------------------	---------------------------------	------------

For uncompensated Baro-VNAV systems, procedure not authorized below -20°C / above 45°C



MISSED APPROACH

Climb to 4000FT, direct to SI052, turn left direct to HPE and hold.
Contact SHIRAKAMI APP.



MINIMA	THR elev. 298	AD elev. 294
CAT	RNP 0.30	
	DA(H)	RVR/CMV
A	-	-
B	-	-
C	607(309)	1000
D		1400

Authorization Required

CHANGE : ATC call sign and FREQ. Description of RADAR Service. Missed APCH PROC.

INSTRUMENT APPROACH CHART

RJSI / HANAMAKI

RNP Y RWY20(AR)

Coding Table

Serial Number	Path Descriptor	Waypoint Identifier	Fly Over	Course °M(°T)	Magnetic Variation	Distance (NM)	Turn Direction	Altitude (FT)	Speed (KIAS)	VPA/ RDH (°/FT)	RNP Value
001	IF	REMEN	-	-	-8.8	-	-	+6000	-	-	-
002	TF	PALPA	-	016 (007.2)	-8.8	5.5	-	-	-	-	1.0
003	TF	NAKAN	-	016 (007.2)	-8.8	5.0	-	3700	-	-	1.0
004	TF	SI053	-	016 (007.2)	-8.8	2.5	-	2913	-165	-3.00	0.3
005	RF Center: SIRF2 r=2.10NM	SI051	-	-	-8.8	6.5	L	853	-	-3.00	0.3
006	TF	RW20	Y	199 (190.7)	-8.8	1.6	-	352	-	-3.00/54	0.3
007	DF	SI052	Y	-	-8.8	-	-	-	-	-	1.0
008	DF	HPE	-	-	-8.8	-	L	4000	-	-	1.0

Path	Waypoint Identifier	Inbound Course °M(°T)	Magnetic Variation	Outbound Time (MIN)	Turn Direction	Minimum Altitude (FT)	Maximum Altitude (FT)	Speed (KIAS)	RNP Value
Hold	REMEN	074 (065.0)	-8.8	1.0 (-14000)	R	6000	FL140	-230 (-14000)	1.0
Hold	HPE	006 (357.5)	-8.8	1.0 (-14000)	R	4000	FL140	-230 (-14000)	1.0

Waypoint Coordinates

Waypoint Identifier	Coordinates	RF Arc Center Identifier	Coordinates
REMEN	391421.92N / 1411154.27E	SIRF2	392732.73N / 1411119.82E
PALPA	391951.68N / 1411248.23E		
NAKAN	392449.66N / 1411337.11E		
SI053	392716.81N / 1411401.29E		
SI051	392756.30N / 1410839.89E		
RW20	392623.24N / 1410817.11E		
SI052	391806.42N / 1410615.76E		
HPE	392600.09N / 1410800.60E		

CHANGE : PROC renamed.