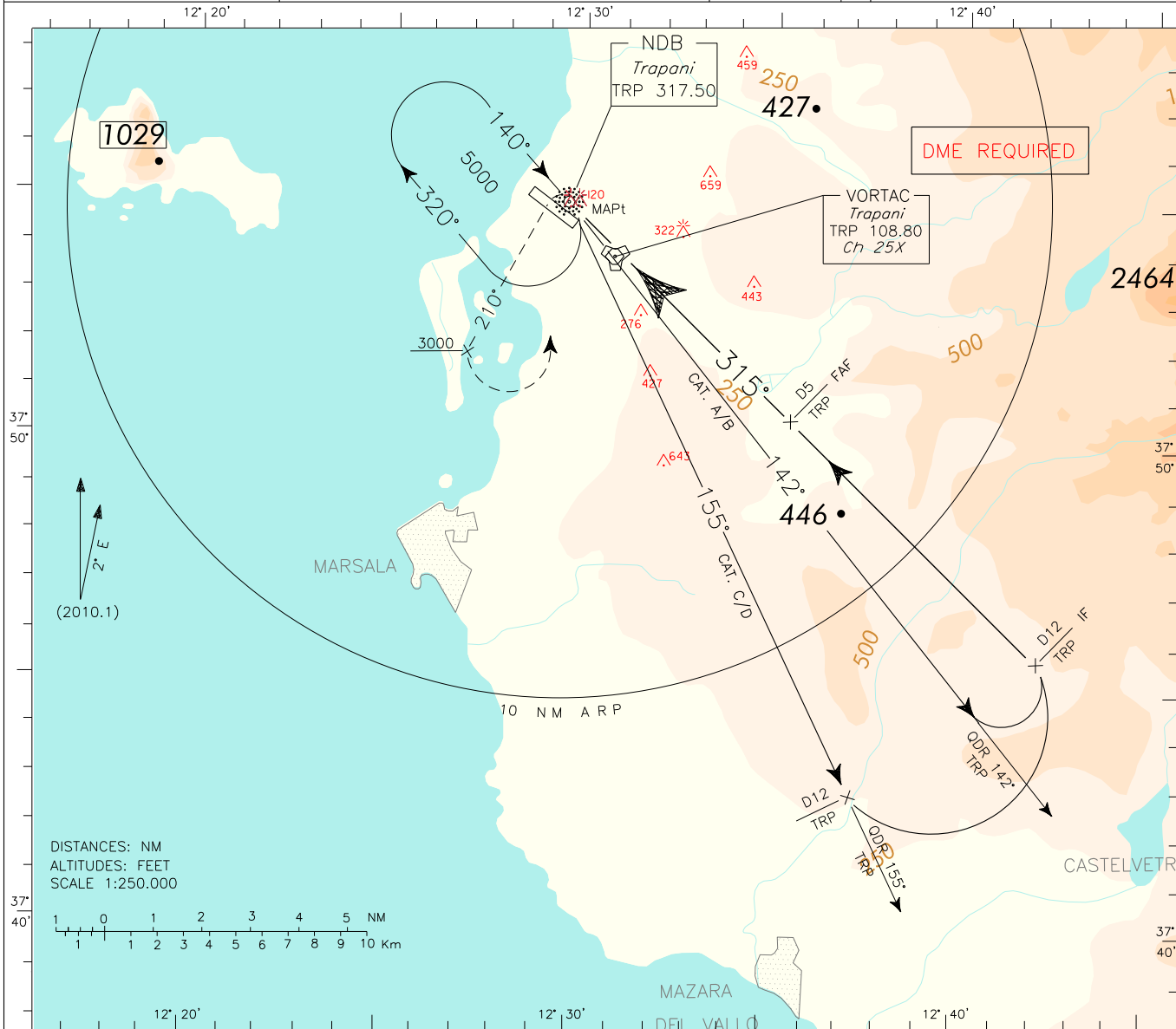


ICAO - INSTRUMENT APPROACH CHART

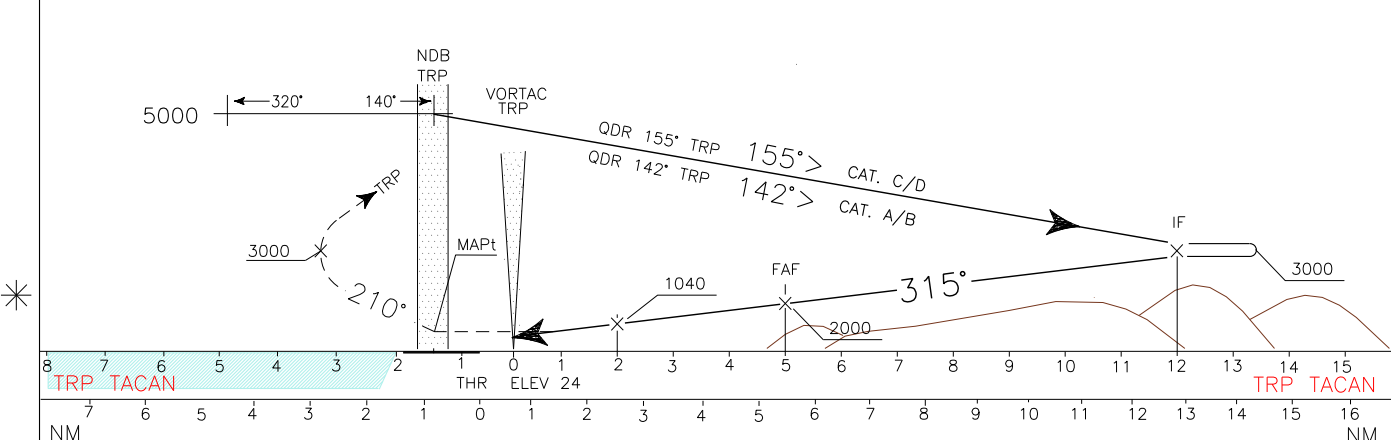
REMARK: Inbound track is off-set 9° from RWY bearing 306°.	APP Trapani APP/Radar	119.950	122.805	AD ELEV	LICIT TRAPANI/ BIRGI NDB RWY 31L
	TWR Trapani TWR	119.730	122.100	26	

DOC.8168-ED.3-1986

CHANGE: AD ELEVATION UPDATED



TRANSITION ALT 5000 MISSED APPROACH: Over TRP NDB turn left on TR 210° climbing to 5000 ft. Passing 3000 ft turn left bound to TRP NDB to reach at 5000 ft. IAS MAX 250 kt.



TRP TACAN		THR				ELEV 24				TRP TACAN			
7 6 5 4 3 2 1 0		1 2 3 4 5 6 7 8 9 10 11 12 13 14 15				NM							
STRAIGHT IN APPROACH	OCA (OCH)	A	B	C	D	(1) Circling South/South West of runway only.				MNM SECT ALT TRP NDB 			
	NDB	640 (620)											
CIRCLING (1)		640 (620)		1040 (1020)									

Edited by AM - CIGA