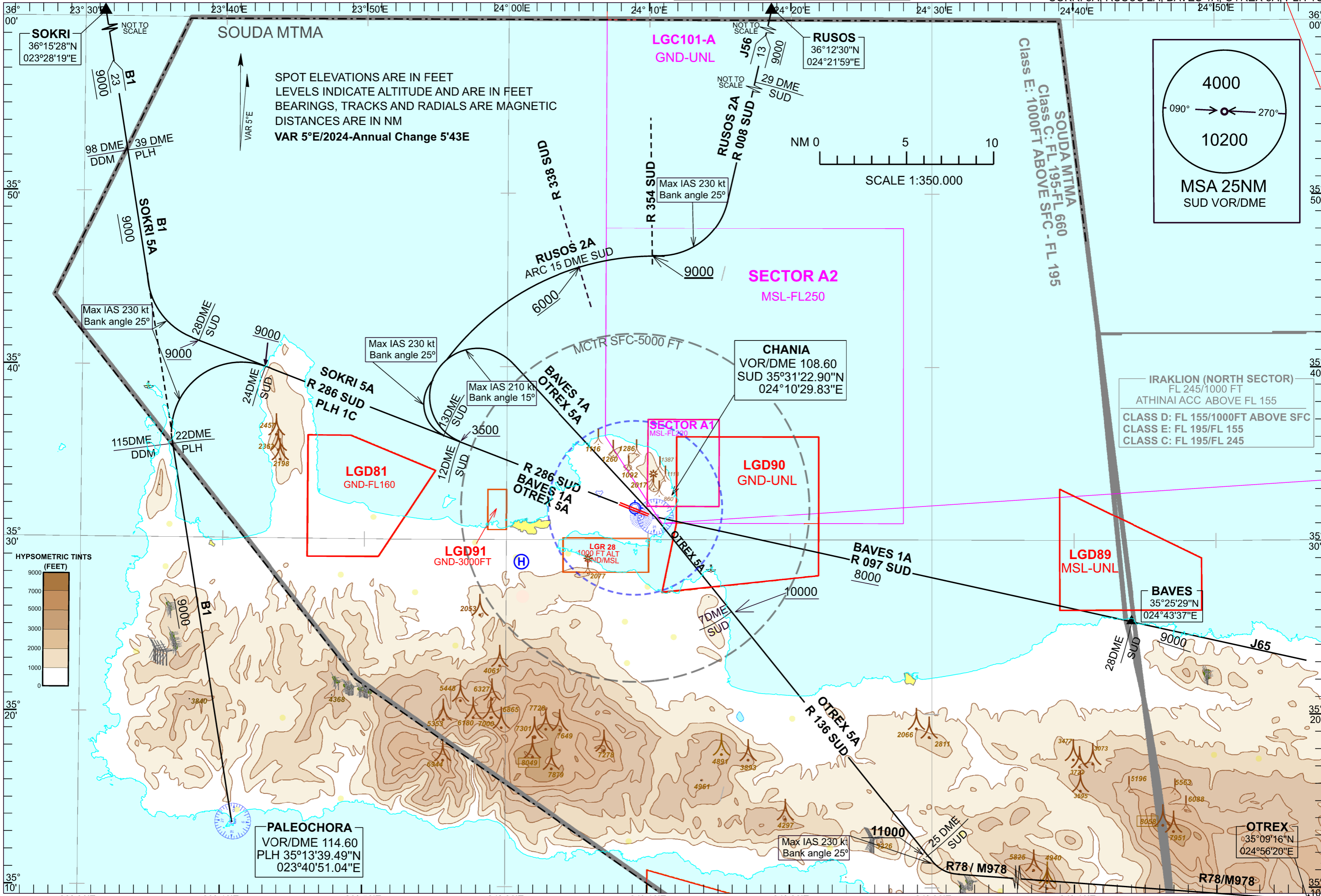


TRANSITION ALTITUDE 11000 ft

SOUDA APP 118.125, 362.300MHz
SOUDA TWR 118.125, 257.800MHz ATIS 130.180



CHANIA/ IOANNIS DASKALOGIANNIS AIRPORT

SIDs RWY 29R
SUD VOR/DME**GENERAL**

When for these SIDs an altitude higher than the transition altitude is designated, then ATC unit shall specify an equivalent flight level.

DESIGNATOR	DESCRIPTION	MAX IAS /BANK ANGLE	MINIMUM CLIMB GRADIENT (PDG).	ALTITUDES
SOKRI 5A	Climb on R 286 SUD. At R 286 SUD/28 DME. Fix turn right, join AWY B1 and proceed to SOKRI.	230KT until turn at R 286 SUD/28 DME. Fix completed. 25° Bank Angle.	5.5% (335 ft/NM) up to 9000 ft for ATC purposes	Cross R 286 SUD/28 DME. Fix at 9000ft or above.
PLH 1C	Climb on R 286 SUD. At R 286 SUD/24 DME. Fix turn left, join AWY B1 and proceed to PLH.	230KT until turn at R 286 SUD/24 DME. Fix completed. 25° Bank Angle.	5.5% (335 ft/NM) up to 9000 ft for ATC purposes	Cross R 286 SUD/24 DME. Fix at 9000ft or above.
RUSOS 2A	Climb on R 286 SUD. At R 286 SUD /13DME. Fix turn right, intercept and follow ARC 15 DME SUD. Crossing R 354 SUD turn left, intercept and follow R 008 SUD, join AWY J56 and proceed to RUSOS.	230KT until turn at R 286 SUD/13 DME completed. 25° Bank Angle. 230KT until turn at the point of intersection of R 354 SUD and Arc 15 DME SUD completed. 25° Bank Angle.	6.0% (365 ft/NM) up to 9000 ft for ATC purposes	Cross R 338 SUD at 6000ft or above. Cross R 354 SUD at 9000ft or above.
BAVES 1A	Climb on R 286 SUD. At R 286 SUD /12DME. Fix or 3500ft turn right and proceed to SUD. After SUD intercept and follow R 097 SUD to BAVES.	210KT until turn at 12 DME/SUD completed. 15° Bank Angle.	5.3% (322 ft/NM) up to 3500ft for ATC purposes	Cross R 286 SUD/12 DME. Fix at 3500ft or above. Cross SUD at 8000ft or above. Cross R 097 SUD/28 DME. Fix at 9000ft or above.
OTREX 5A	Climb on R 286 SUD. At R 286 SUD /12DME. Fix or 3500ft turn right and proceed to SUD. After SUD intercept and follow R 136 SUD. At R 136 SUD/25 DME. Fix turn left to join Awys R78/M978 and proceed to OTREX.	210KT until turn at 12 DME/SUD completed. 15° Bank Angle. 230KT until turn at R136 SUD/25 DME. Fix completed.	5.3% (322 ft/NM) up to 10000ft for ATC purposes	Cross R 286 SUD/12 DME. Fix at 3500ft or above. Cross R 136 SUD/7DME at 10000ft or above. Cross R 136 SUD/25 DME. Fix at 11000ft or above.

NOTE1 : VISUAL DEPARTURE RWY 29R to intercept R 008 SUD to join AWY J56 to RUSOS.

During day time, when visibility is 10 KM and ceiling 3100ft or above, aircraft expecting routing via RUSOS 2A SID may be requested if they can accept a Visual Departure with right turn. When accepting a Visual Departure with right turn aircraft will expect to turn right as soon as practicable after departure, maintain VMC and own terrain separation until passing 3100 ft to intercept R 008 SUD.

Thence they shall follow R 008 SUD to join AWY J56 to RUSOS .

Caution spot heights:.

Bearing SUD/VOR 317°/5.27NM at 1116 ft.
Bearing SUD/VOR 321°/4.20NM at 1260 ft.
Bearing SUD/VOR 325°/3NM at 1092 ft.
Bearing SUD/VOR 352°/1.58NM at 2017 ft.