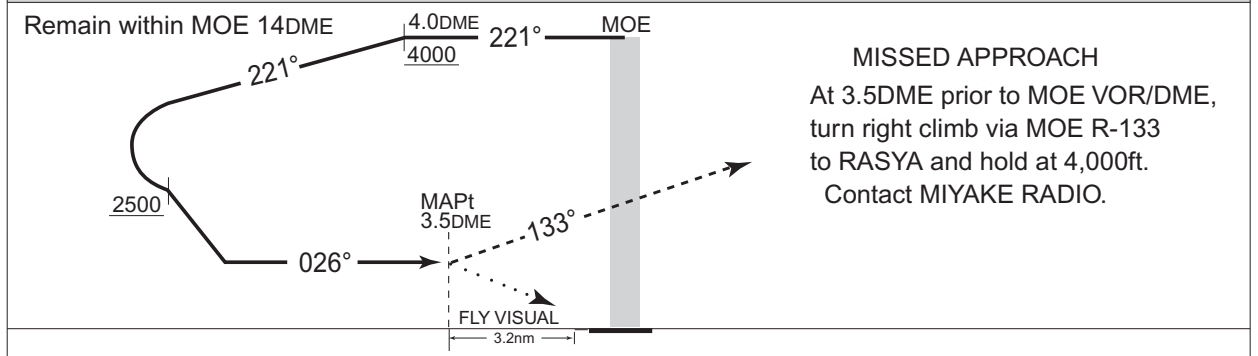
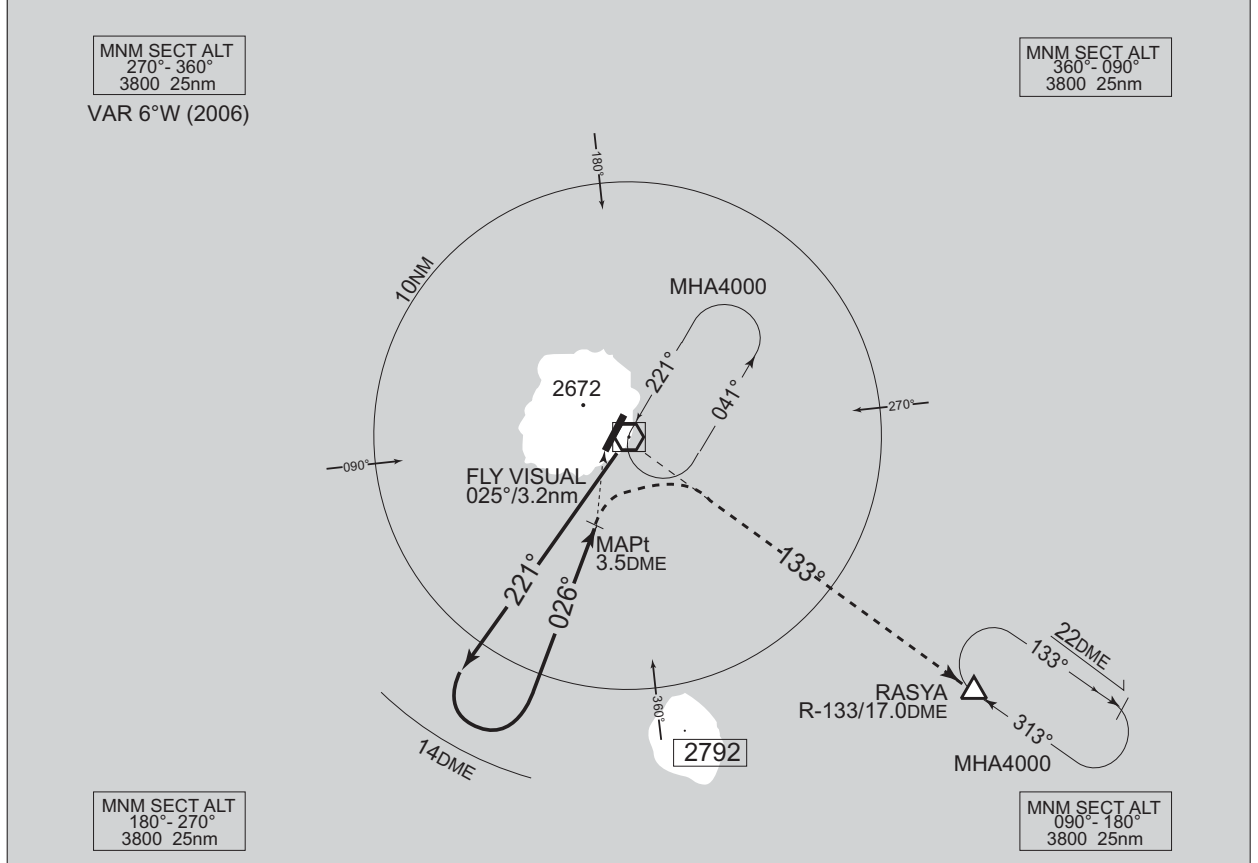


INSTRUMENT APPROACH CHART

RJTQ / MIYAKEJIMA

VOR/DME B

TOKYO CONTROL 125.9 – 134.15 318.2 – 227.3	OYAMA VOR/DME 108.65 MOE CH-23Y 34°04'16"N/139°33'41"E	MIYAKE RADIO 118.05 AFIS provided by New Chitose Airport Office	NO RADAR
--	---	--	----------



**MISSED APPROACH**  
At 3.5DME prior to MOE VOR/DME, turn right climb via MOE R-133 to RASYA and hold at 4,000ft. Contact MIYAKE RADIO.

MINIMA		AD elev. 65
CAT	CIRCLING	
	MDA(H)	VIS
A	760 (695)	3200
B		
C	-	-
D	-	-

CHANGE: AFIS unit.

Circling to East side of RWY only.