

STANDARD DEPARTURE CHART - INSTRUMENT

RJSY / SHONAI

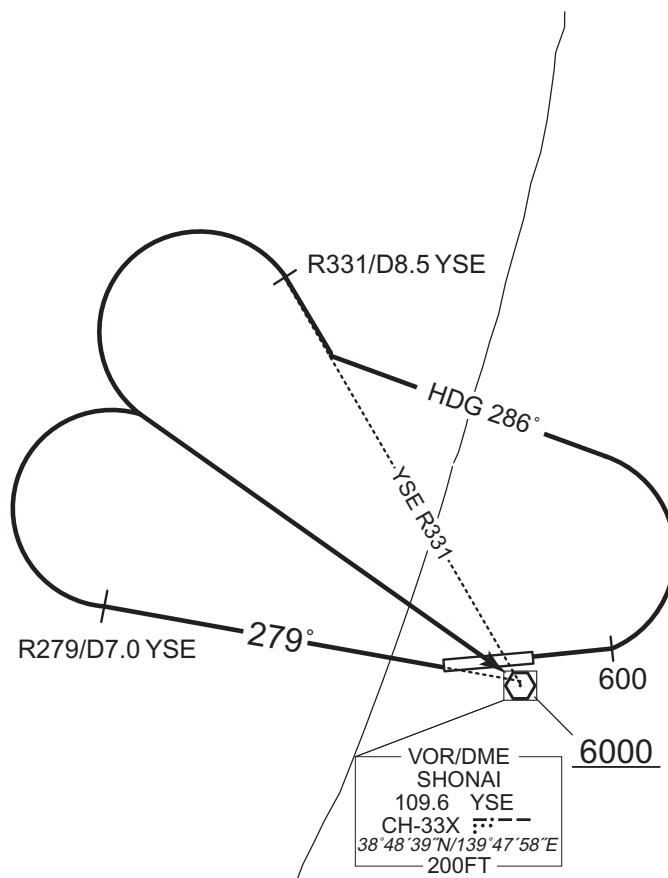
SID

SHONAI REVERSAL FOUR DEPARTURE

RWY 09 : Climb RWY HDG to 600FT, turn left HDG 286° to intercept and proceed via YSE R331 to YSE R331/8.5DME, turn left,...

RWY 27 : Climb via YSE R279 to YSE R279/7.0DME, turn right,...

...direct to YSE VOR/DME.
Cross YSE VOR/DME at or above 6000FT.



CHANGE : PROC renamed. PROC course.