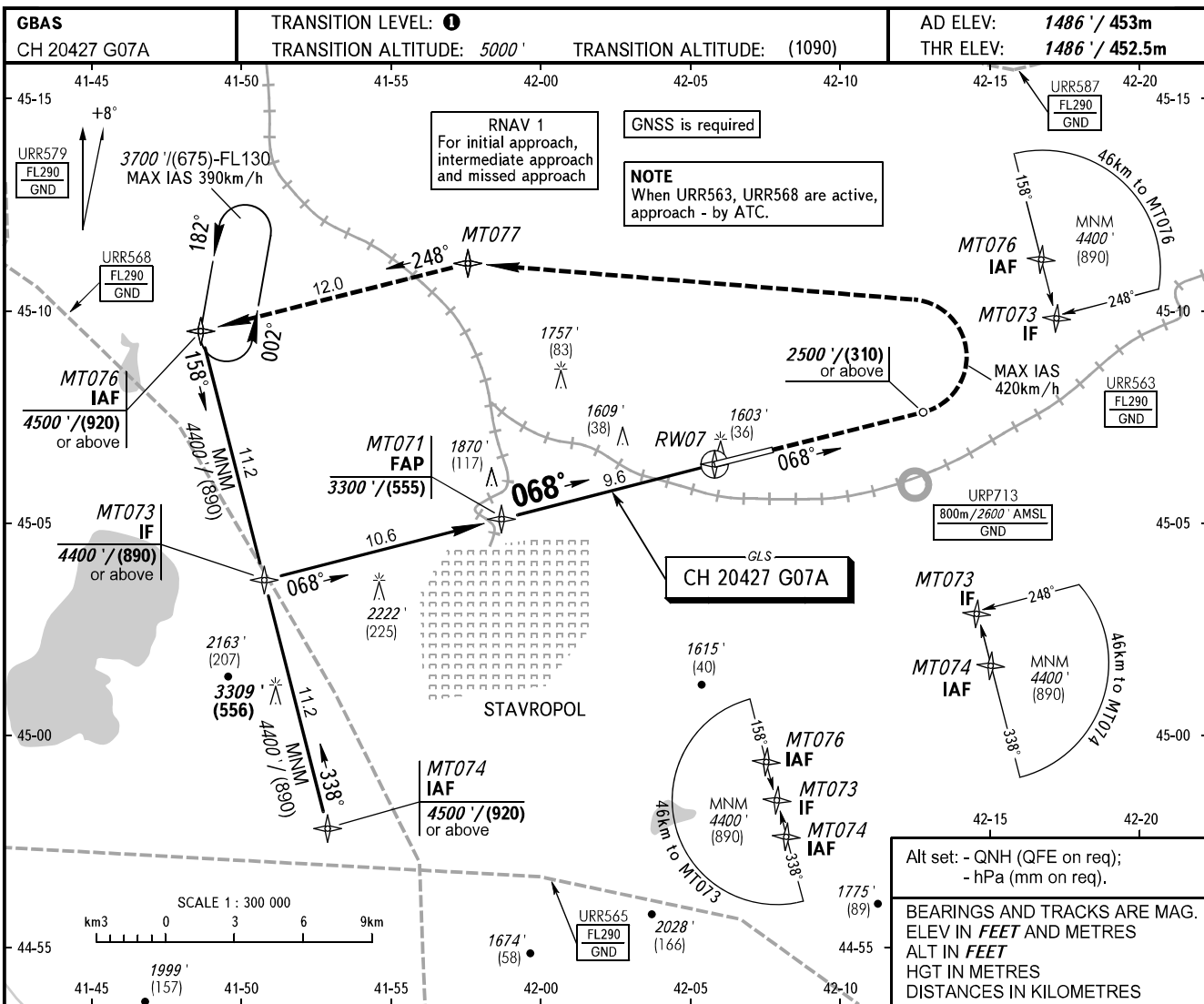


**INSTRUMENT  
APPROACH  
CHART - ICAO**

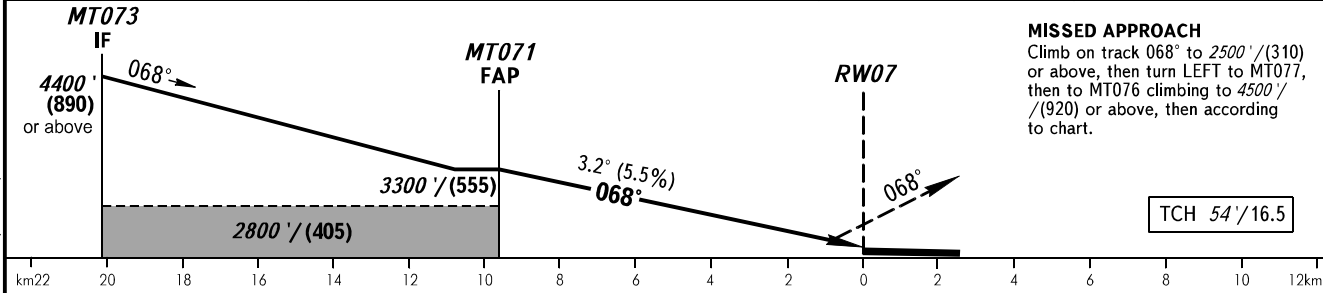
TOWER **120.900**

**STAVROPOL, RUSSIA**  
SHPAKOVSKOYE  
GLS RWY 07



Alt set: - QNH (QFE on req);  
- hPa (mm on req).  
BEARINGS AND TRACKS ARE MAG.  
ELEV IN FEET AND METRES  
ALT IN FEET  
HGT IN METRES  
DISTANCES IN KILOMETRES

DIST to RW07	8.0	6.0	4.0	2.0
ALTITUDE/HEIGHT	2940'/(445)	2580'/(335)	2220'/(225)	1860'/(115)



**MISSED APPROACH**  
Climb on track 068° to 2500'/(310) or above, then turn LEFT to MT077, then to MT076 climbing to 4500'/(920) or above, then according to chart.

TCH 54'/16.5

OCA(H)		A	B	C	D	① TRANSITION LEVEL:					
Straight-in Approach		1652' (167') (51)	1665' (179') (55)	1673' (187') (57)	1683' (198') (60)	- FL060 when QNH is 1013 hPa (760mm mercury column) or above;					
						- FL070 when QNH is 977 hPa (733mm mercury column) or above, but less than 1013 hPa (760mm mercury column);					
Circling		1940' (450') (140)	1980' (500') (155)	2150' (670') (205)	2270' (780') (240)	- FL080 when QNH is less than 977 hPa (733mm mercury column).					
GROUND SPEED		km/h	150	180	210	240	270	300	330	360	390
RATE OF DESCENT		m/s	2.3	2.8	3.2	3.7	4.1	4.6	5.1	5.5	6.0
		ft/min	451	541	632	722	812	902	992	1082	1173

CHANGE: Limiting bearing line withdrawn, MT073, MNM, URP713