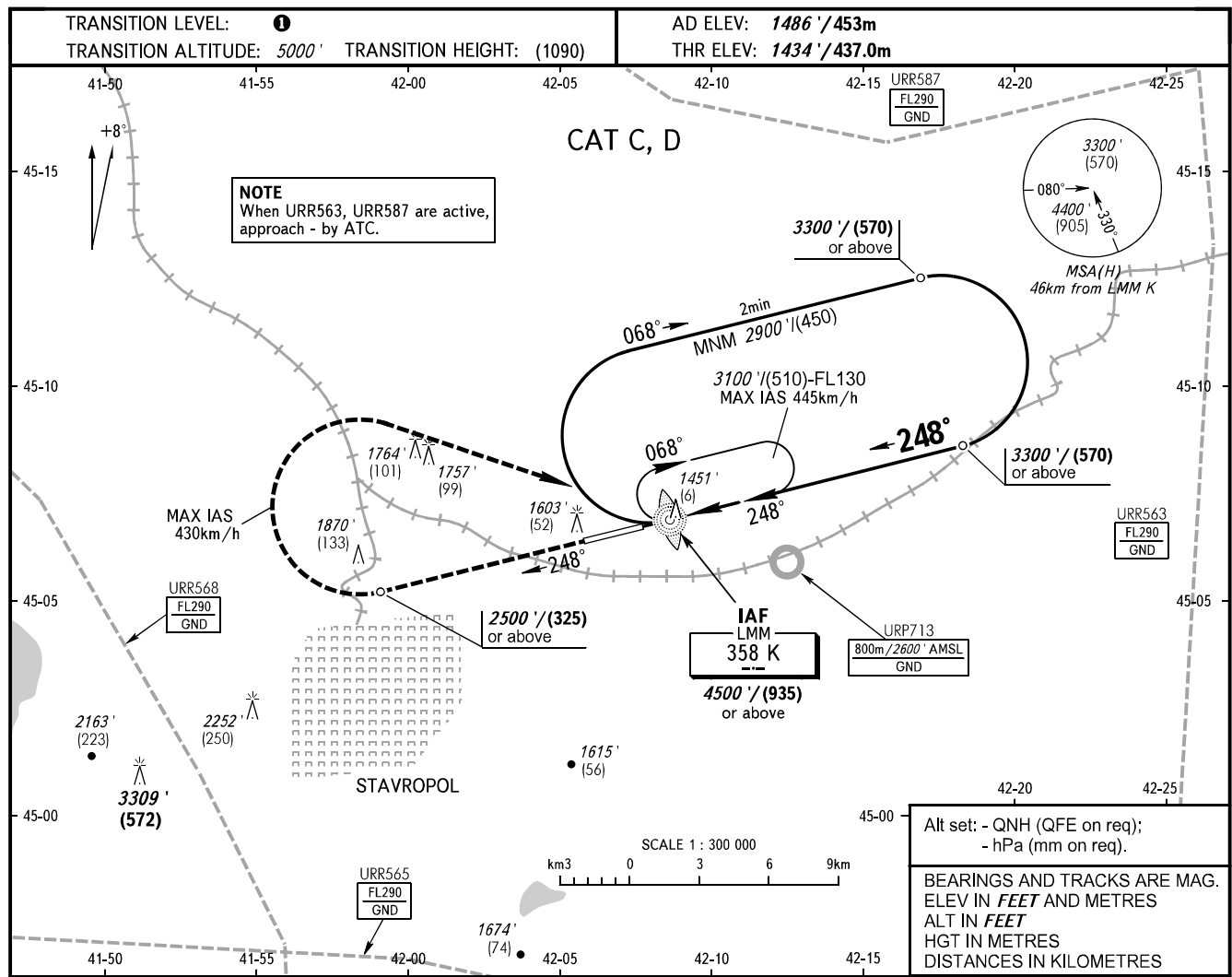


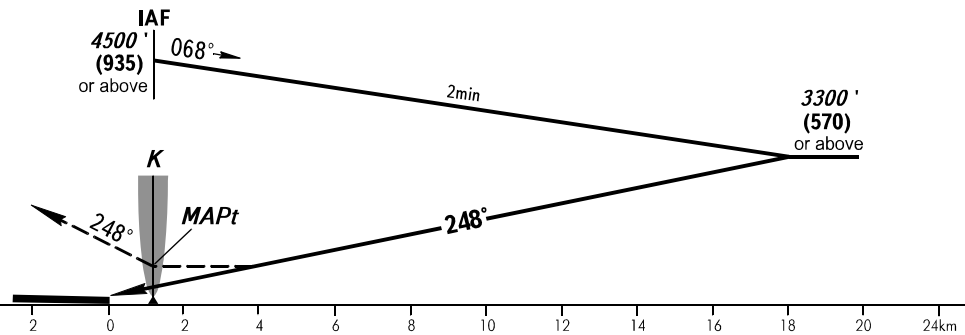
INSTRUMENT  
APPROACH  
CHART - ICAO

TOWER 120.900

STAVROPOL, RUSSIA  
SHPAKOVSKOYE  
NDB V RWY 25



**MISSED APPROACH**  
Climb on track 248° to 2500' / (325) or above, then turn RIGHT to LMM K at 4500' / (935) or above, then according to chart.



OCA(H)		A	B	C	D
Straight-in Approach				1750' (315') (100)	1750' (315') (100)
Circling				2150' (670') (205)	2270' (780') (240)

- ① **TRANSITION LEVEL:**
- FL060 when QNH is 1013 hPa (760mm mercury column) or above;
  - FL070 when QNH is 977 hPa (733mm mercury column) or above, but less than 1013 hPa (760mm mercury column);
  - FL080 when QNH is less than 977 hPa (733mm mercury column).

CHANGE: Limiting bearing line withdrawn, URP713