

NORFOLK, VIRGINIA

# ILS or LOC/DME RWY 10

LOC I-NGU <b>108.95</b>	APCH CRS <b>101°</b>	Rwy Ildg TDZE Arprt Elev <b>8071</b> <b>14</b> <b>15</b>
----------------------------	-------------------------	---

[USN]

NORFOLK NS (CHAMBERS FLD) (KNGU)

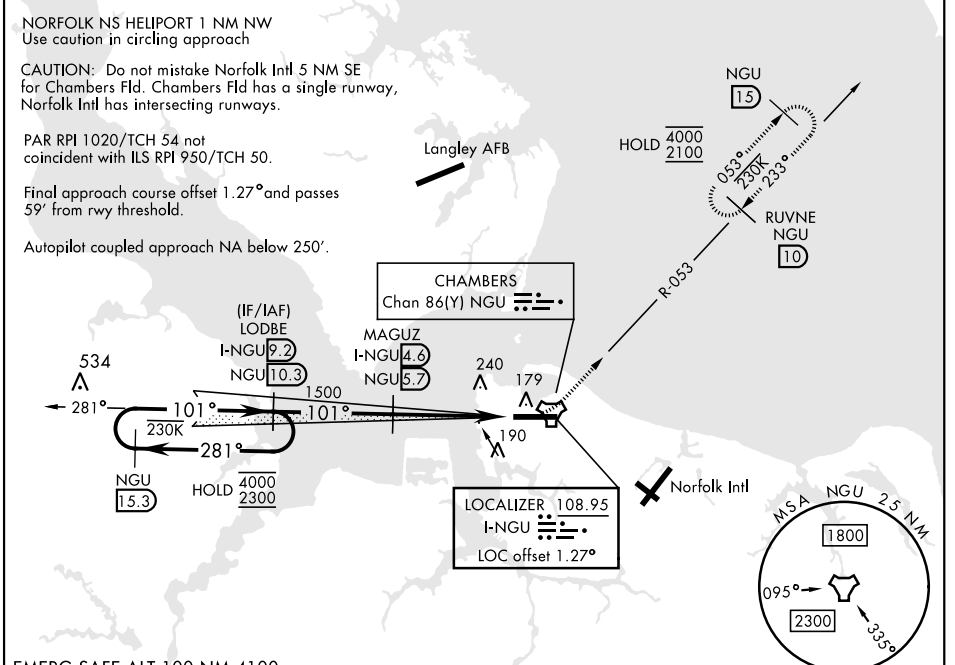
TACAN required

▼ \* When ALS inop, increase vis to ¾ mile.  
 \*\* When ALS inop, increase CAT AB vis to 1 mile, CAT CDE vis to 1 ¼ miles.  
 \*\*\* Circling not authorized S of Rwy 10-28.



MISSED APPROACH: Climbing left turn to 2100 via NGU TACAN R-053 to RUVNE and hold.

ATIS <b>118.425 338.225</b>	APP CON <b>118.9 273.475</b>	CHAMBERS TOWER <b>124.3 379.15</b>	GND CON <b>121.8 370.85</b>	CLNC DEL <b>120.7 339.8</b>	ASR/PAR
--------------------------------	---------------------------------	---------------------------------------	--------------------------------	--------------------------------	---------



VGSi and ILS glidepath not coincident (VGSi Angle 3.00/TCH 35).					ELEV 15	TDZE 14
					Rwy 10 Ildg 8071'	Rwy 28 Ildg 7375'
CATEGORY	A	B	C	D	E	
S-ILS 10 *	264-½		250	(300-½)		
S-LOC 10 **	440-½	426 (500-½)	440-¾	426 (500-¾)		
CIRCLING ***	480-1 465 (500-1)	540-1 525 (600-1)	540-1½ 525 (600-1½)	580-2	565 (600-2)	
					HIRL Rwy 10-28 REIL Rwy 10-28 TDZL/CL Rwy 10-28	

NORFOLK, VIRGINIA 36°56'N-76°17'W NORFOLK NS (CHAMBERS FLD) (KNGU)

Amtd 2 22FEB24

# ILS or LOC/DME RWY 10

NE-3, 20 MAR 2025 to 17 APR 2025

NE-3, 20 MAR 2025 to 17 APR 2025