

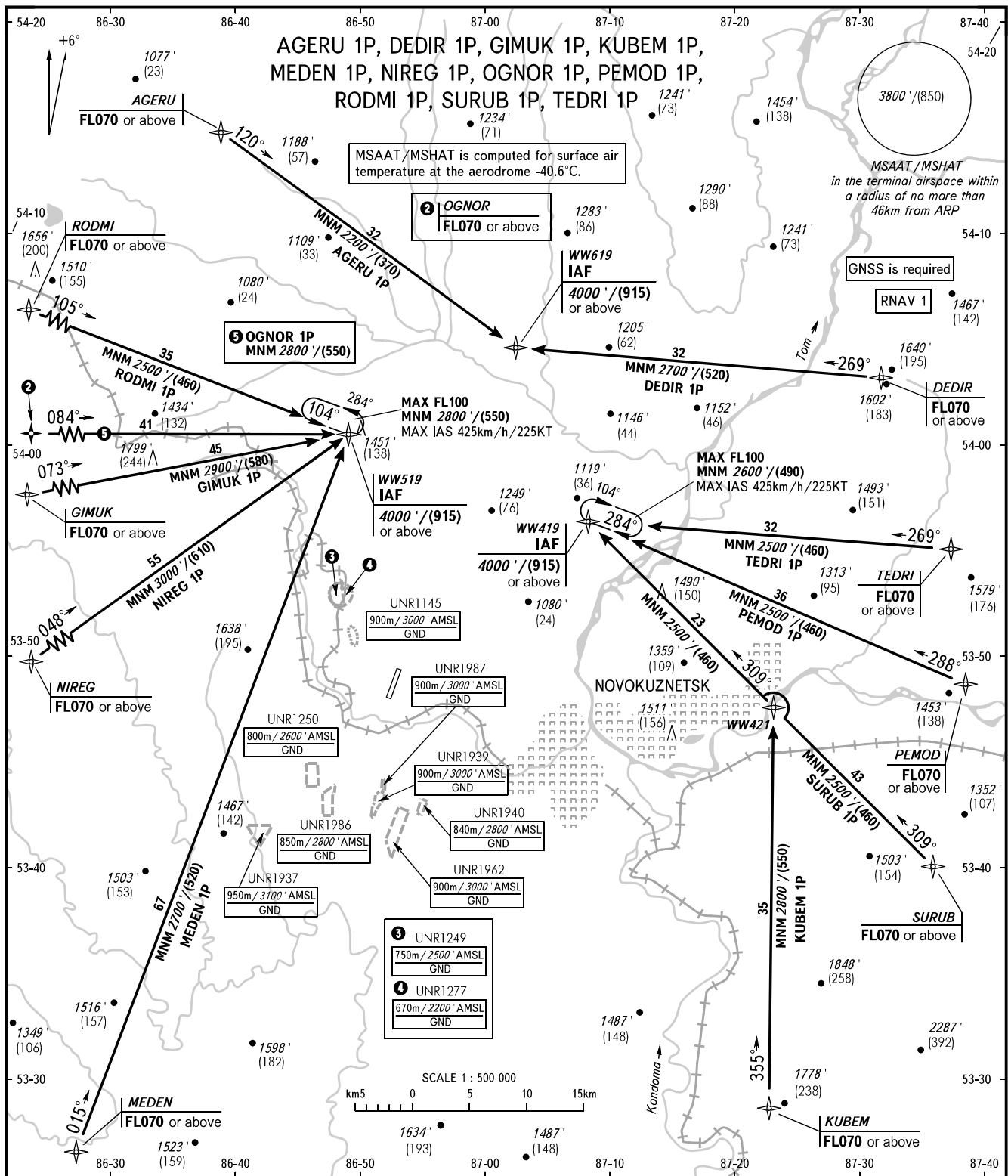
STANDARD ARRIVAL CHART INSTRUMENT (STAR) - ICAO

NOVOKUZNETSK, RUSSIA

SPICHENKOVO

RNAV RWY 19

TRANSITION
LEVEL: ①



APPROACH START	118.600 121.200	① TRANSITION LEVEL: - FLO50 when QNH is 1013 hPa (760mm mercury column) or above; - FLO60 when QNH is 977 hPa (733mm mercury column) or above, but less than 1013 hPa (760mm mercury column); - FLO70 when QNH is less than 977 hPa (733mm mercury column).
BEARINGS AND TRACKS ARE MAGNETIC ALTITUDES IN FEET, HEIGHTS IN METRES ELEVATIONS IN FEET AND METRES DISTANCES IN KILOMETRES	Alt set: -QNH(QFE on req); -hPa(mm on req).	

CHANGE: HLDG, OBST, GIMUK 1P