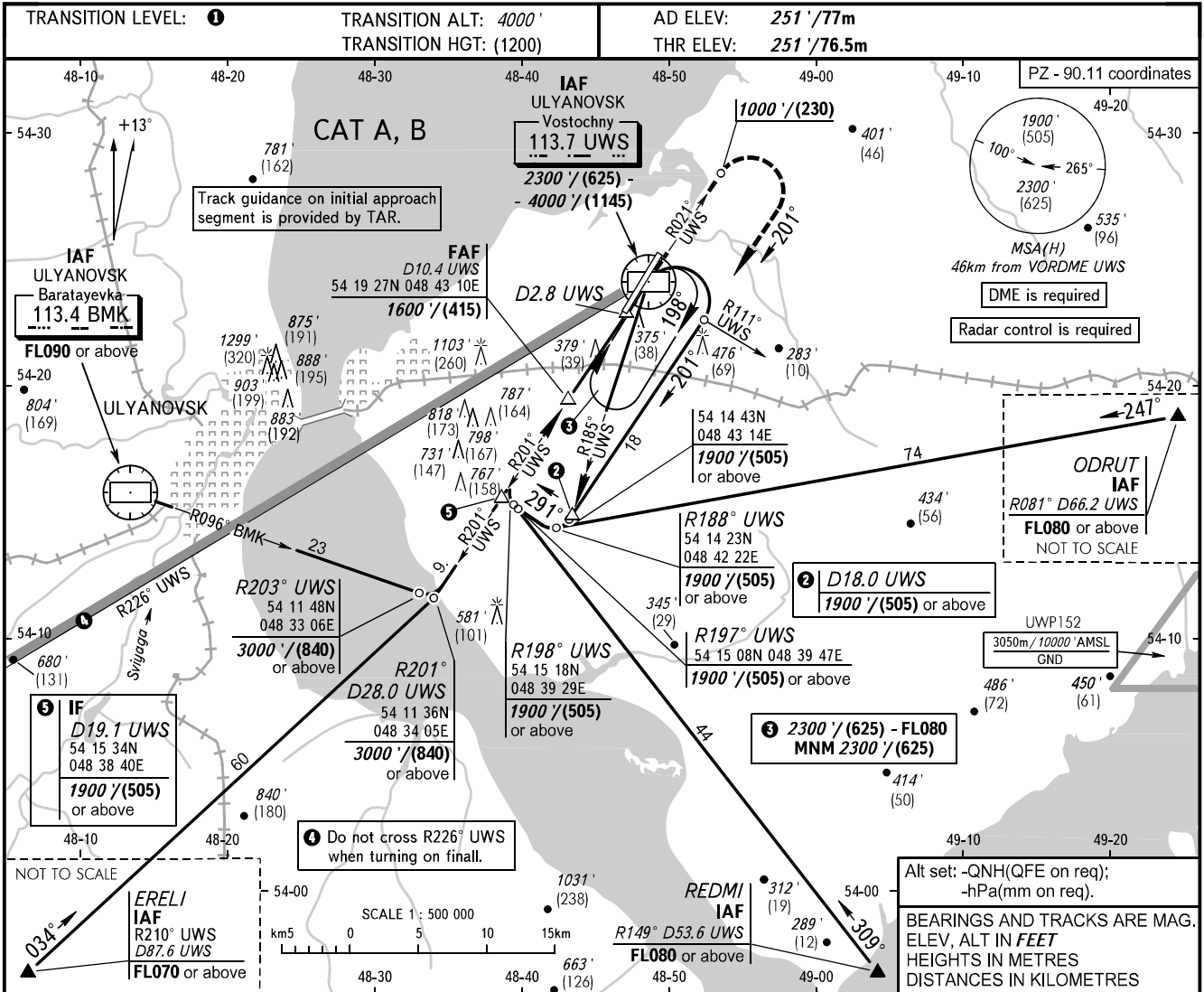


**INSTRUMENT  
APPROACH  
CHART - ICAO**

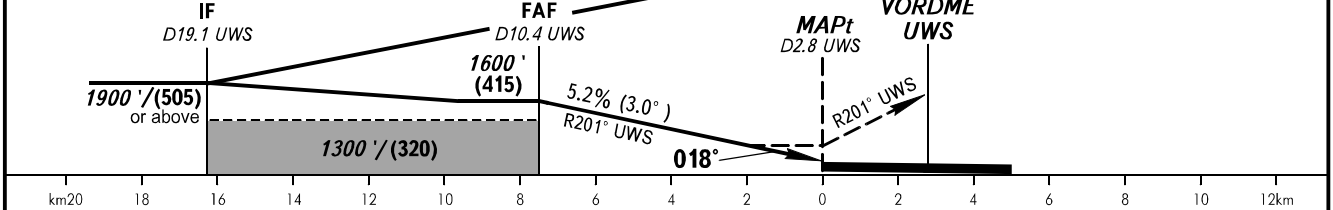
VOSTOCHNY TOWER 124.200

**ULYANOVSK, RUSSIA  
VOSTOCHNY  
VOR Y RWY 02**



DME UWS	10.0	8.0	6.0
ALTITUDE/HEIGHT	1530' / (390)	1190' / (287)	850' / (183)

**MISSED APPROACH**  
Climb straight ahead to 1000' / (230), turn RIGHT onto track 201° climbing to 1900' / (505) or above, then as instructed by ATC.



	OCA(H)				1					
	A	B	C	D						
Straight-in	630' (380') (120)	630' (380') (120)			<b>1</b> TRANSITION LEVEL: - FL050 when QNH is 977 hPa (733mm mercury column) or above; - FL060 when QNH is less than 977 hPa (733mm mercury column).  <b>WARNING:</b> 1. Visual manoeuvring north-west of the aerodrome is PROHIBITED. 2. Final approach segment is offset by 3° from RCL.					
Approach										
Circling	680' (420') (135)	750' (500') (153)								
GROUND SPEED	km/h	150	180	210	240	270	300	330	360	390
	kt	81	97	113	130	146	162	178	194	211
RATE OF DESCENT	m/s	2.2	2.6	3.0	3.5	3.9	4.3	4.8	5.2	5.6
	ft/min	427	512	597	682	768	853	938	1024	1109

CHANGE: Geographical location name