

Egilsstadir SID RWY 21 - VAD 2A, ELVUR 2A, BRUSI 2A, FELLI 3A

AIP Iceland
FLUGMÁLAHANDBÓK

EGILSSTAÐIR SID
RWY 21

TRANS LEVEL BY ATC
TRANS ALT 7000 FET

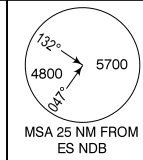
STANDARD DEPARTURE CHART -
INSTRUMENT (SID) - ICAO

STRICT ADHERENCE WITHIN THE LIMITS OF PERFORMANCE CRITERIA IS
MANDATORY. THE ROUTES MAY ADDITIONALLY BE SUPPLEMENTED BY ALTITUDE
AND/OR FLIGHT LEVEL RESTRICTION. IF UNABLE TO COMPLY WITH SID ADVISE
ATC PRIOR TO TAKE-OFF.

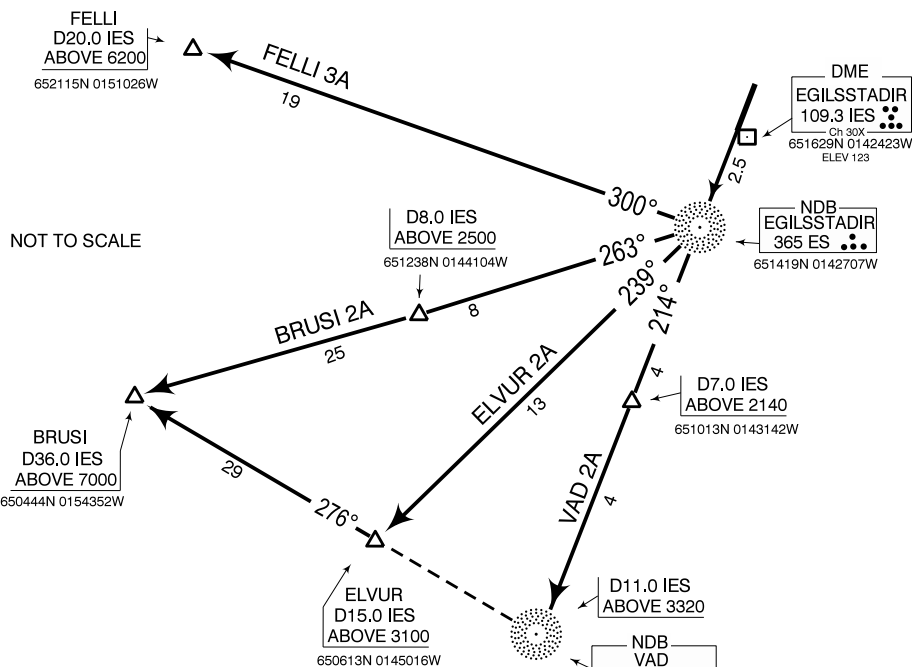
AD ELEV 76

AFIS 119.400
ACC 119.700

VAD 2A ELVUR 2A BRUSI 2A FELLI 3A



CHANGES: FELLI SID CHANGED, MINM ALT AT FELLI, AT OR ABOVE ALT AT DZ.0 REMOVED



CLIMB TO MNM ENROUTE
ALT BEFORE ACCELERATE

VAR 9° W (2021)
BRG ARE MAG
DIST IN NM
ELEV AND ALT IN FT MSL

THESE SIDs REQUIRE MINIMUM CLIMB GRADIENT OF:

BRUSI 2A 4.3% 261 FT PR NM UP TO 2500 FT
VAD 2A 4.8% 292 FT PR NM UP TO 6000 FT
FELLI 3A 5.0% 304 FT PR NM UP TO 6000 FT

GND SPEED KTS	100	150	180	200
4.3% FEET PR MIN	436	654	784	871
4.8% FEET PR MIN	487	730	876	973
5.0% FEET PER MIN	507	760	912	1013

SID	RWY	ROUTING
FELLI 3A	21	CLIMB TO ES NDB. TURN RIGHT ON TRACK 300° DIRECT TO FELLI.
BRUSI 2A	21	CLIMB TO ES NDB. TURN RIGHT ON TRACK 263° DIRECT TO BRUSI.
ELVUR 2A	21	CLIMB TO ES NDB. TURN RIGHT ON TRACK 239°. DIRECT TO ELVUR. THEN RIGHT TURN ON TRACK 276° TO BRUSI.
VAD 2A	21	CLIMB DIRECT TO VA NDB ON TRACK 214°. THEN CONTINUE ON TRACK 207° TO HN NDB.

THIS PAGE INTENTIONALLY LEFT BLANK