

TACAN Z RWY 10

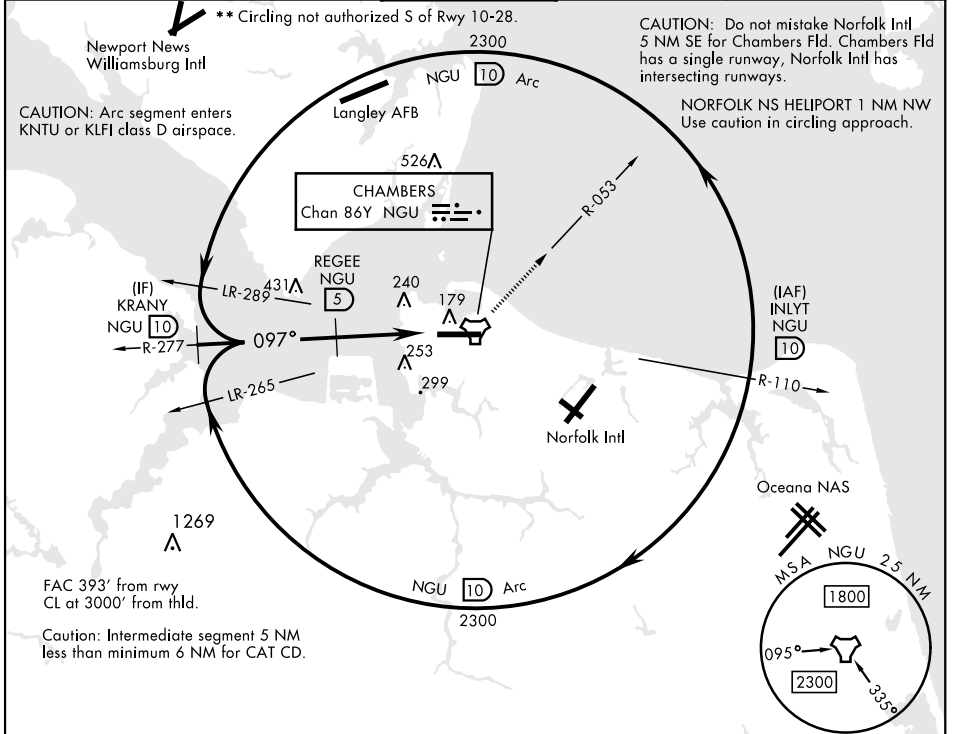
TACAN NGU Chan 86Y	APCH CRS 097°	Rwy ldg 8071' TDZE 14 Arprt Elev 15
---------------------------	----------------------	--

[USN]

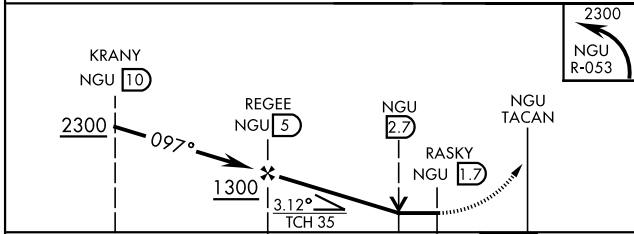
NORFOLK NS (CHAMBERS FLD) (KNGU)

RADAR required	ALSIF-2	MISSED APPROACH: Climbing left turn to 2300 on NGU TACAN R-053 then as directed by ATC.
<p>▼ * When ALS inop, increase CAT AB vis to 1 mile, CAT CD vis to 1½ miles.</p>		

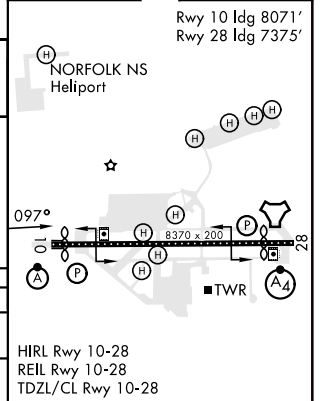
ATIS 118.425 338.225	APP CON 118.9 273.475	CHAMBERS TOWER 124.3 379.15	GND CON 121.8 370.85	CLNC DEL 120.7 339.8	ASR/PAR
--------------------------------	---------------------------------	---------------------------------------	--------------------------------	--------------------------------	---------



EMERG SAFE ALT 100 NM 4100



ELEV 15	TDZE 14
---------	---------



CATEGORY	A		B		C		D	
S-10*	520-½	506 (600-½)	520-1	506 (600-1)	520-1	506 (600-1)	520-1	506 (600-1)
CIRCLING**	520-1 505 (600-1)	540-1 525 (600-1)	540-1½ 525 (600-1½)	580-2 565 (600-2)	540-1½ 525 (600-1½)	580-2 565 (600-2)	540-1½ 525 (600-1½)	580-2 565 (600-2)

TACAN Z RWY 10

NE-3, 20 MAR 2025 to 17 APR 2025

NE-3, 20 MAR 2025 to 17 APR 2025