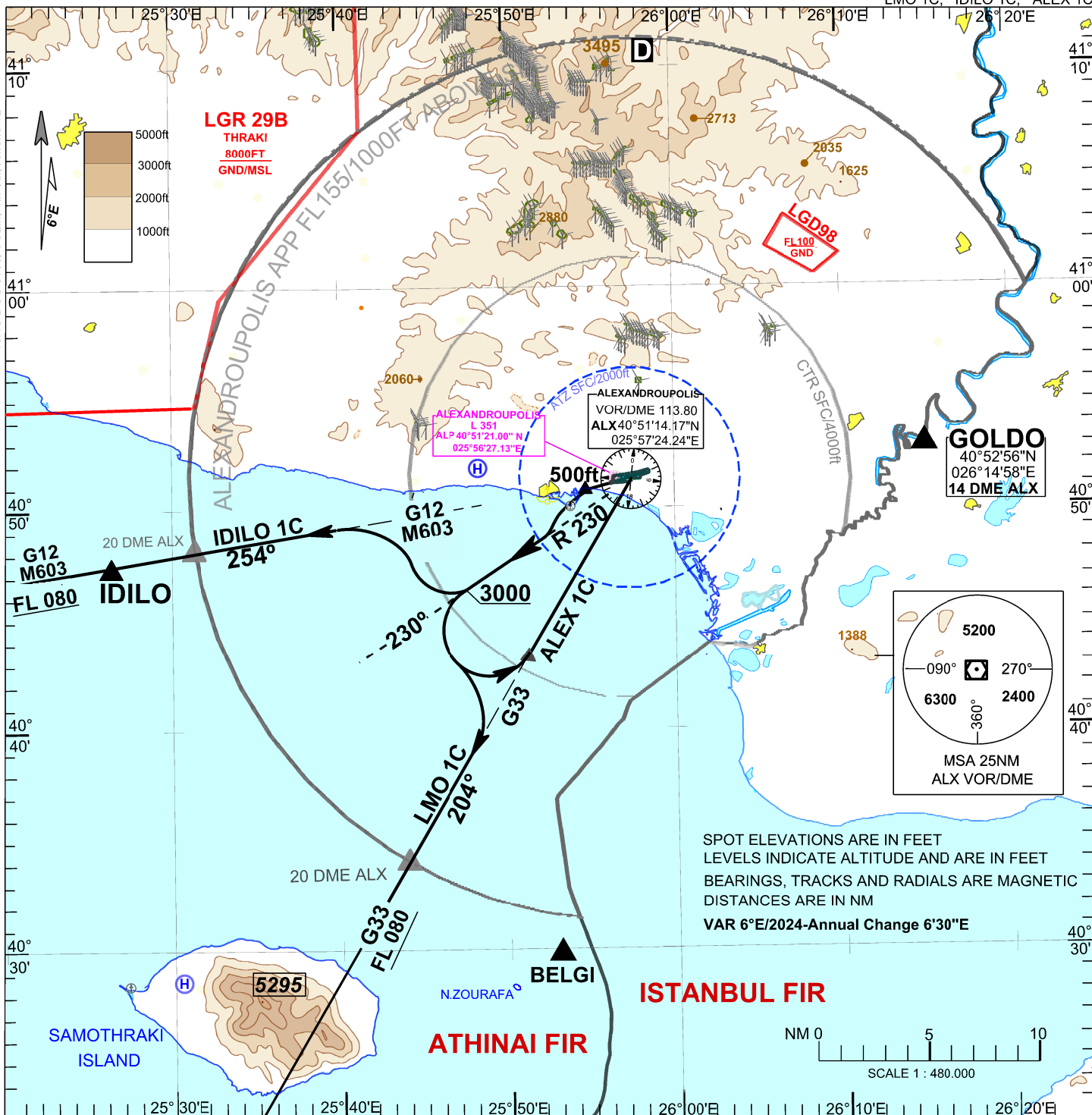


TRANSITION ALTITUDE 4000ft

ALEXANDROUPOLIS TWR 123.800  
APP 123.800



SPOT ELEVATIONS ARE IN FEET  
LEVELS INDICATE ALTITUDE AND ARE IN FEET  
BEARINGS, TRACKS AND RADIALS ARE MAGNETIC  
DISTANCES ARE IN NM  
VAR 6°E/2024-Annual Change 6'30"E

**GENERAL INSTRUCTIONS**

- a) Minimum net climb gradient of 5.5% (330 ft/nm) is required until the minimum en-route altitude is reached.
- b) Speed limit: 210KT IAS during turn.
- c) Aircraft shall leave the TMA at minimum en-route altitude or above.

**LIMNOS ONE CHARLIE - (LMO 1C)**

Climb straight ahead to 500 ft turn left intercept and follow R 230 ALX (or ALP 230°) until reaching 3000ft, then turn left again to join AWY G33 and proceed to LIMNOS.

**IDILO ONE CHARLIE DEPARTURE - (IDILO 1C)**

Climb straight ahead to 500 ft turn left intercept and follow R 230 ALX (or ALP 230°) until reaching 3000ft, then turn right to join AWY G12/M603 and proceed to IDILO.

**ALEX ONE CHARLIE DEPARTURE - (ALEX 1C)**

Climb straight ahead to 500 ft turn left intercept and follow R 230 ALX (or ALP 230°) until reaching 3000ft, then turn left again inbound to ALX/VOR (or ALP L) FL 075 or above and then follow ATS route as assigned by ATC.

Changes: G12/M603 instead of G12 (description)