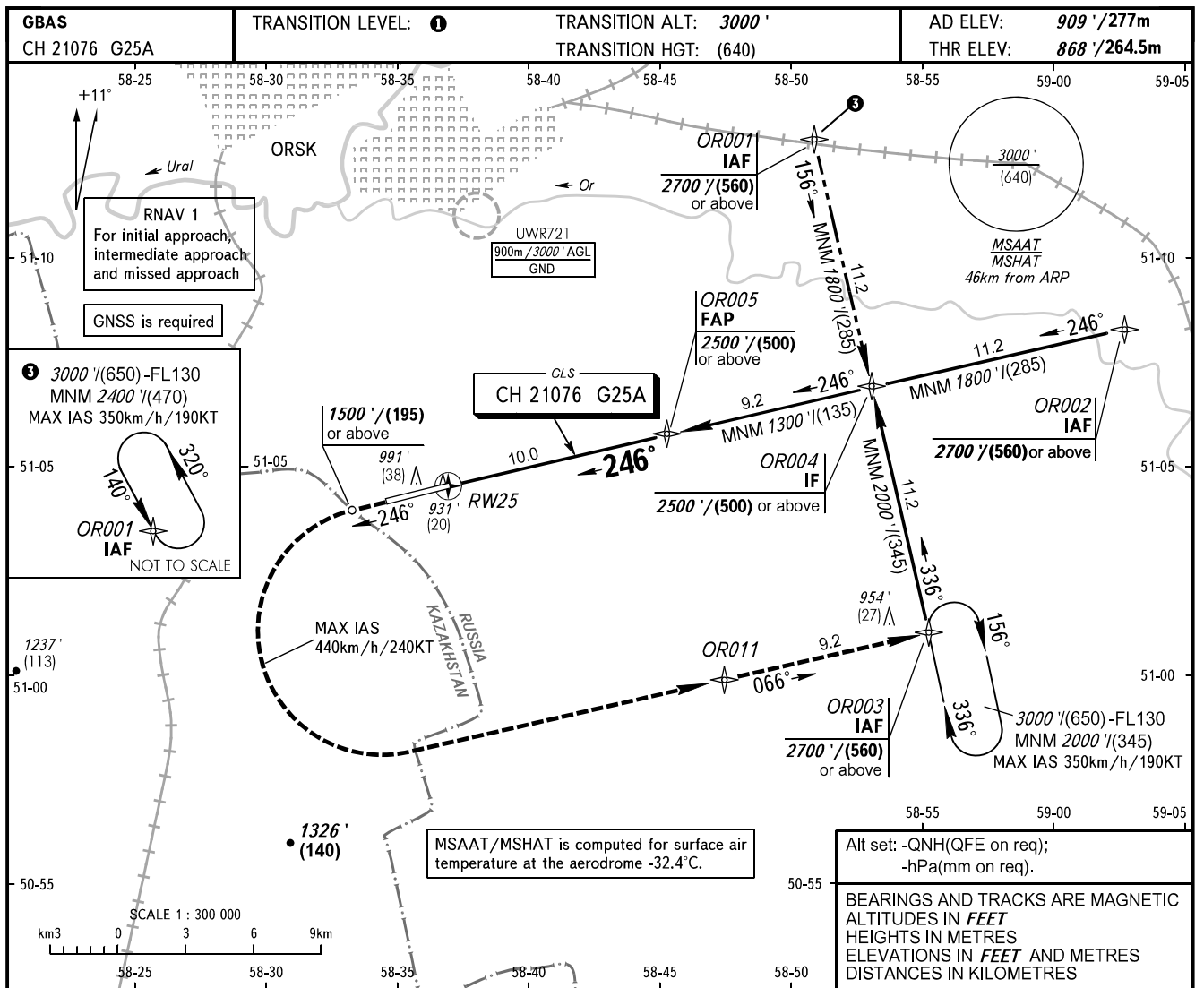


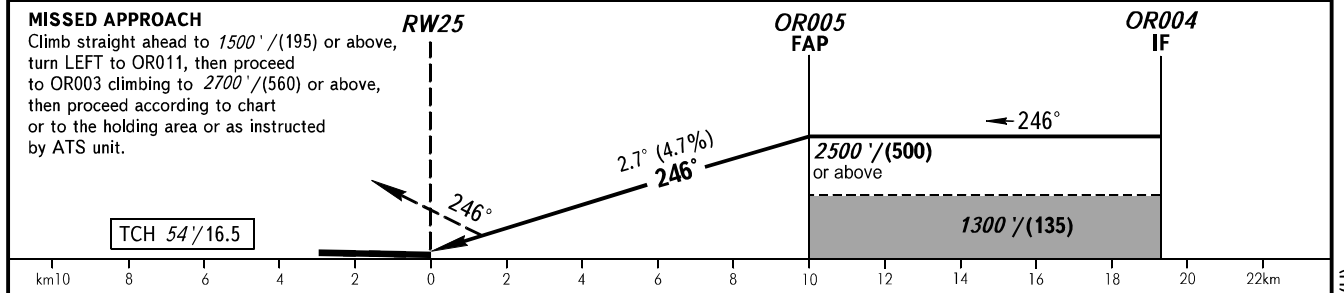
**INSTRUMENT  
APPROACH  
CHART - ICAO**

**ORSK, RUSSIA**  
ORSK  
GLS RWY 25

TOWER 122.700



DIST to RW25	2.0	4.0	6.0	8.0
ALTITUDE/HEIGHT	1230' / (110)	1540' / (205)	1850' / (300)	2160' / (395)



OCA(H)		A	B	C	D	① TRANSITION LEVEL:							
Straight-in Approach	<b>CAT I</b>	1061' (193') (59)	1073' (205') (62)	1081' (213') (65)	1091' (223') (68)	- FL040 when QNH is 1013 hPa (760mm mercury column) or above;							
						- FL050 when QNH is 977 hPa (733mm mercury column) or above but less than 1013 hPa (760mm mercury column);							
						- FL060 when QNH is less than 977 hPa (733mm mercury column).							
Circling		1310' (400') (125)	1410' (500') (155)	1630' (720') (220)	1660' (750') (230)								
GROUND SPEED		km/h	150	180	210	240	270	300	330	360	390	420	450
RATE OF DESCENT		m/s	2.0	2.4	2.7	3.1	3.5	3.9	4.3	4.7	5.1	5.5	5.9
		ft/min	385	463	540	617	694	771	848	925	1002	1079	1156

CHANGE: Heading, MSAAT / MSHAT, OCA(H)