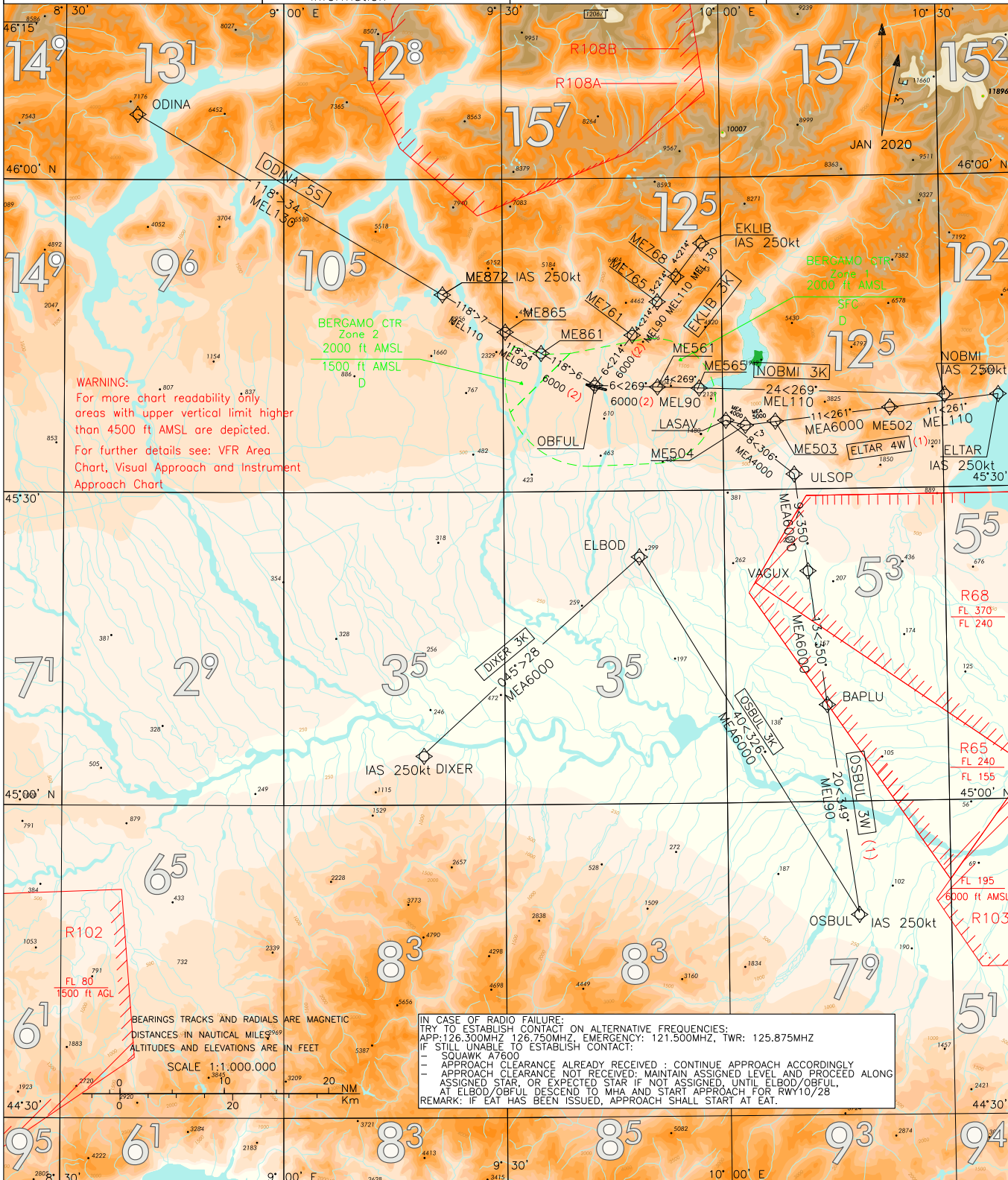


<p>(1) To be used only for ILS approach to RWY28 and when radar service available.</p> <p>(2) FL90 RWY28 approach only</p> <p>(3) For RNAV system with holding functionality</p> <p>(4) For RNAV system without holding functionality</p>	<p>FREQUENCIES</p> <p>APP Milano Radar 126.750 (126.300)</p> <p>TWR Orio TWR 125.875 (CH 134.105)</p> <p>ATIS Bergamo ATIS 118.540</p> <p>Information</p>		<p>STAR</p> <p>RNAV1/RNP1</p> <p>ATC discretion</p>	<p>BERGAMO/</p> <p>ORIO AL SERIO</p>
				<p>TRANSITION ALT 6000</p>



CHANGE: ATIS FREQUENCY UPDATED

IN CASE OF RADIO FAILURE:
 TRY TO ESTABLISH CONTACT ON ALTERNATIVE FREQUENCIES:
 APP:126.300MHZ 126.750MHZ, EMERGENCY: 121.500MHZ, TWR: 125.875MHZ
 IF STILL UNABLE TO ESTABLISH CONTACT:
 - SQUAWK 7600
 - APPROACH CLEARANCE ALREADY RECEIVED : CONTINUE APPROACH ACCORDINGLY
 - APPROACH CLEARANCE NOT RECEIVED: MAINTAIN ASSIGNED LEVEL AND PROCEED ALONG ASSIGNED STAR, OR EXPECTED STAR IF NOT ASSIGNED, UNTIL ELBOD/OBFUL.
 AT ELBOD/OBFUL DESCEND TO MHA AND START APPROACH FOR RWY10/28.
 REMARK: IF EAT HAS BEEN ISSUED, APPROACH SHALL START AT EAT.

<p>MNM SECT ALT</p> <p>25 NM ARP</p> <p>12400</p>	<p>OBFUL Holding Pattern</p> <p>RWY28 approach only</p> <p>IAS MAX 200 KT MHL 90</p>	<p>OBFUL Holding Pattern</p> <p>RWY10 approach only</p> <p>IAS MAX 185KT MHA 6000</p>	<p>ELBOD Holding Pattern</p> <p>IAS MAX 200 KT MHA 6000</p>
---	--	---	---