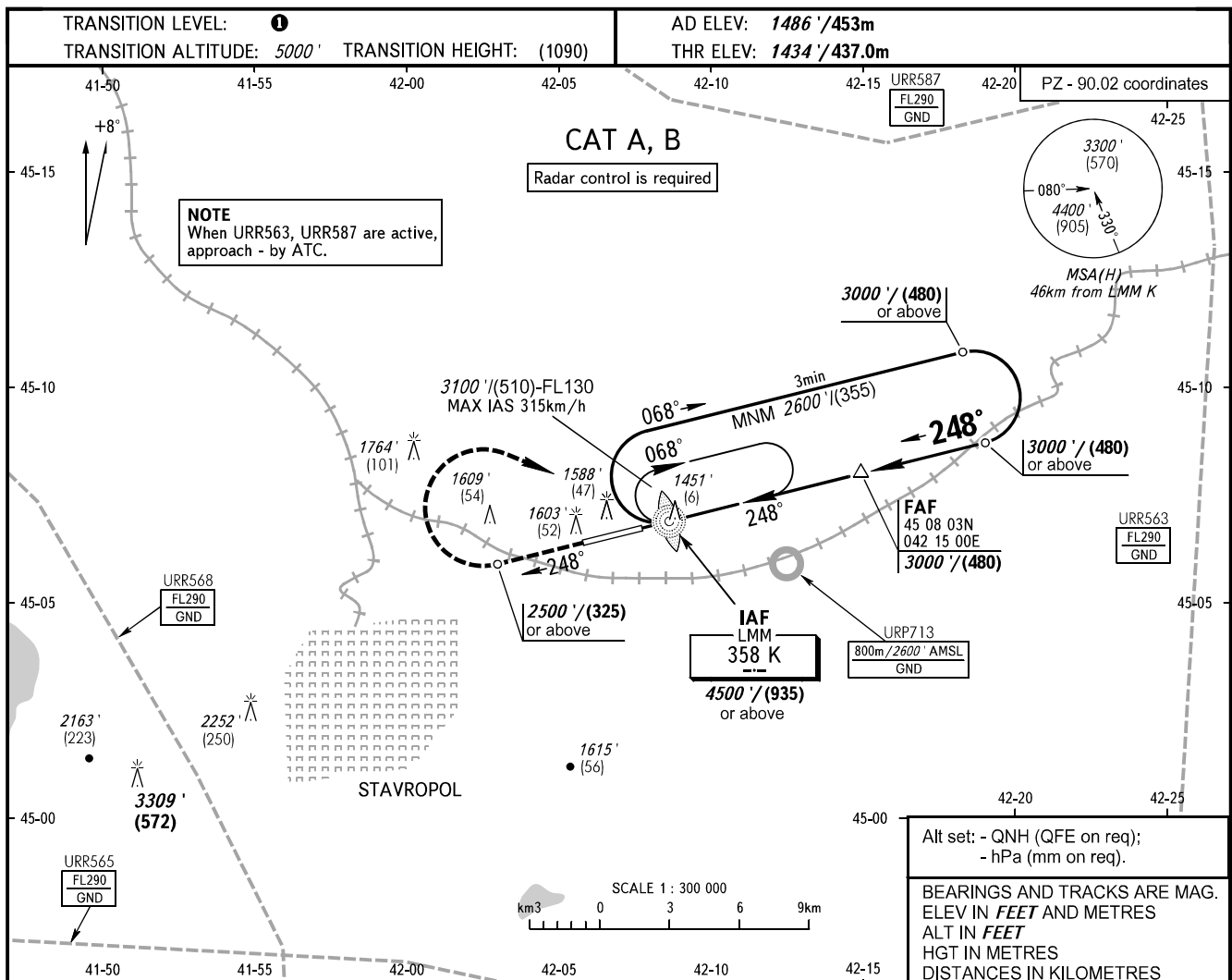


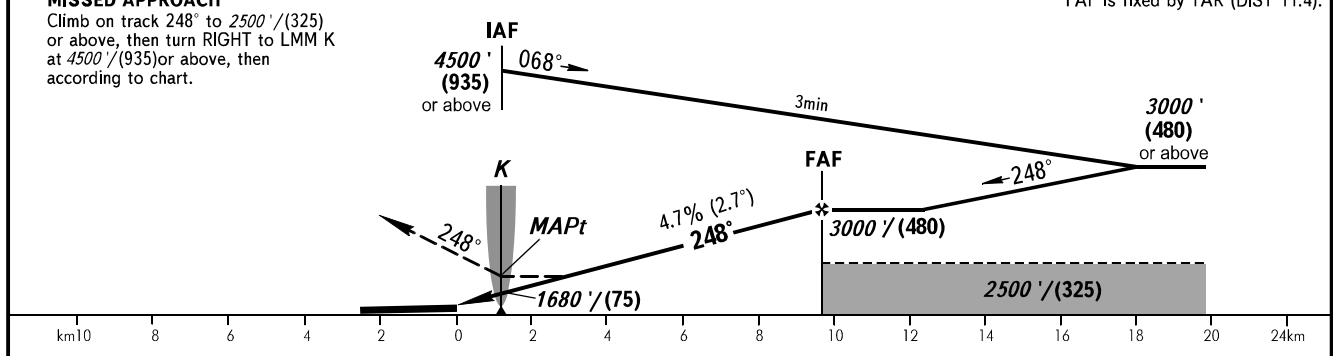
**INSTRUMENT
APPROACH
CHART - ICAO**

STAVROPOL, RUSSIA
SHPAKOVSKOYE
NDB W RWY 25

TOWER **120.900**



MISSED APPROACH Climb on track 248° to 2500'/(325) or above, then turn RIGHT to LMM K at 4500'/(935) or above, then according to chart. FAF is fixed by TAR (DIST 11.4).



OCA(H)		A	B	C	D						
Straight-in Approach		1697' (263') (80)	1697' (263') (80)								
Circling		1940' (450') (140)	1980' (500') (155)								
GROUND SPEED		km/h	150	180	210	240	270	300	330	360	390
RATE OF DESCENT		m/s	1.9	2.3	2.7	3.1	3.5	3.9	4.3	4.7	5.0
		ft/min	385	463	540	617	694	771	848	925	1002

- 1 TRANSITION LEVEL:**
- FL060 when QNH is 1013 hPa (760mm mercury column) or above;
 - FL070 when QNH is 977 hPa (733mm mercury column) or above, but less than 1013 hPa (760mm mercury column);
 - FL080 when QNH is less than 977 hPa (733mm mercury column).
- WARNING**
MAPt at LMM K. Timing not authorized for defining MAPt.

CHANGE: Limiting bearing line withdrawn, URP713