

STANDARD DEPARTURE CHART - INSTRUMENT

RJOB / OKAYAMA

SID

KIBI REVERSAL SIX DEPARTURE

RWY 07 : Climb RWY HDG to 1400FT, via OYE R071 to 9.0DME, turn right,...

RWY 25 : Climb RWY HDG to 1400FT, turn left, via OYE R226 to 6.0DME, turn left,...

...direct to OYE VOR/DME.

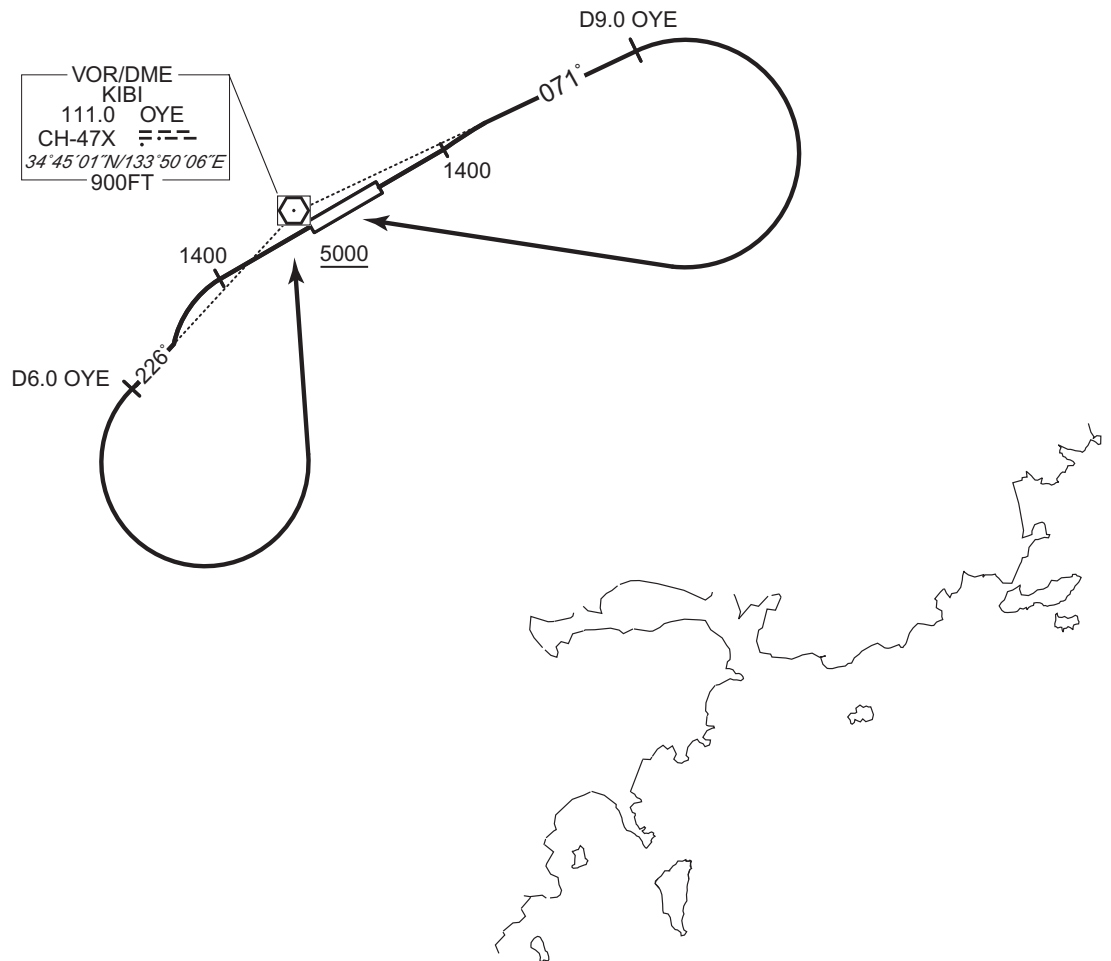
Cross OYE VOR/DME at or above 5000FT.

Note RWY07 : 5.3% climb gradient required up to 1400FT.

OBST ALT 1083FT located at 1.0NM 047° FM end of RWY07.

RWY25 : 4.0% climb gradient required up to 1400FT.

OBST ALT 1017FT located at 1.1NM 228° FM end of RWY25.



CHANGE : Description of PROC name.