

STANDARD DEPARTURE CHART -INSTRUMENT

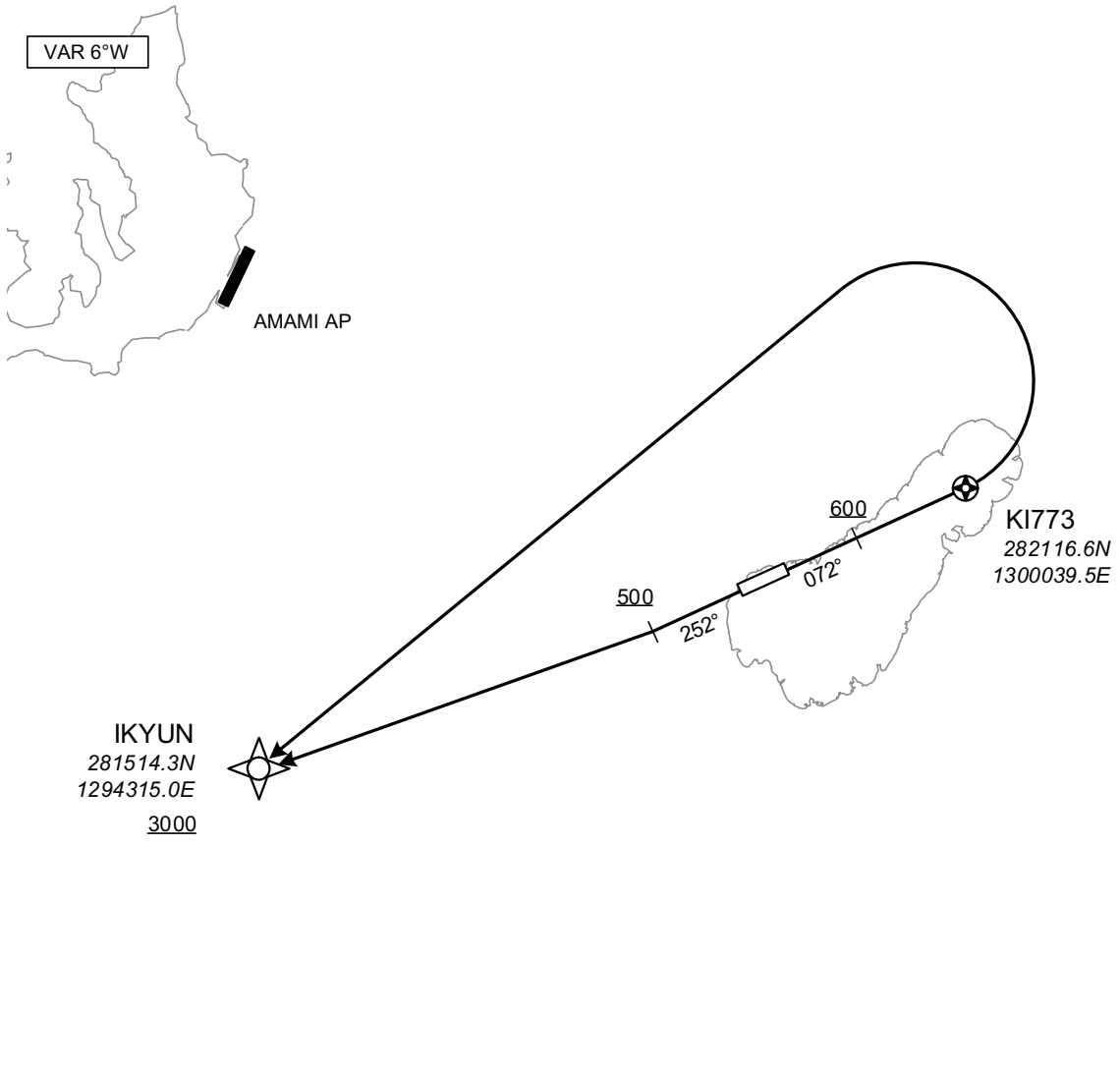
RJKI / KIKAI

RNAV SID

IKYUN ONE DEPARTURE

RNP1

Note GNSS required.



CHANGE : Description of PROC name and VAR.

RWY07 : Climb on HDG072° at or above 600FT, direct to KI773, turn left direct to IKYUN at or above 3000FT.

RWY25 : Climb on HDG252° at or above 500FT, direct to IKYUN at or above 3000FT.

NOTE RWY07 : 5.0% climb gradient required up to 600FT.
OBST ALT 558FT located at 2.4NM 089° FM end of RWY07.

STANDARD DEPARTURE CHART -INSTRUMENT

RJKI / KIKAI

RNAV SID

IKYUN ONE DEPARTURE

RWY07

Serial Number	Path Descriptor	Waypoint Identifier	Fly Over	Course °M(°T)	Magnetic Variation	Distance (NM)	Turn Direction	Altitude (FT)	Speed (KIAS)	Vertical Angle	Navigation Specification
001	VA	-	-	072 (065.7)	-6.1	-	-	+600	-	-	RNP1
002	DF	KI773	Y	-	-6.1	-	-	-	-	-	RNP1
003	DF	IKYUN	-	-	-6.1	-	L	+3000	-	-	RNP1

RWY25

Serial Number	Path Descriptor	Waypoint Identifier	Fly Over	Course °M(°T)	Magnetic Variation	Distance (NM)	Turn Direction	Altitude (FT)	Speed (KIAS)	Vertical Angle	Navigation Specification
001	VA	-	-	252 (245.7)	-6.1	-	-	+500	-	-	RNP1
002	DF	IKYUN	-	-	-6.1	-	-	+3000	-	-	RNP1

CHANGE : Navigation Specification(Basic RNP1 → RNP1).