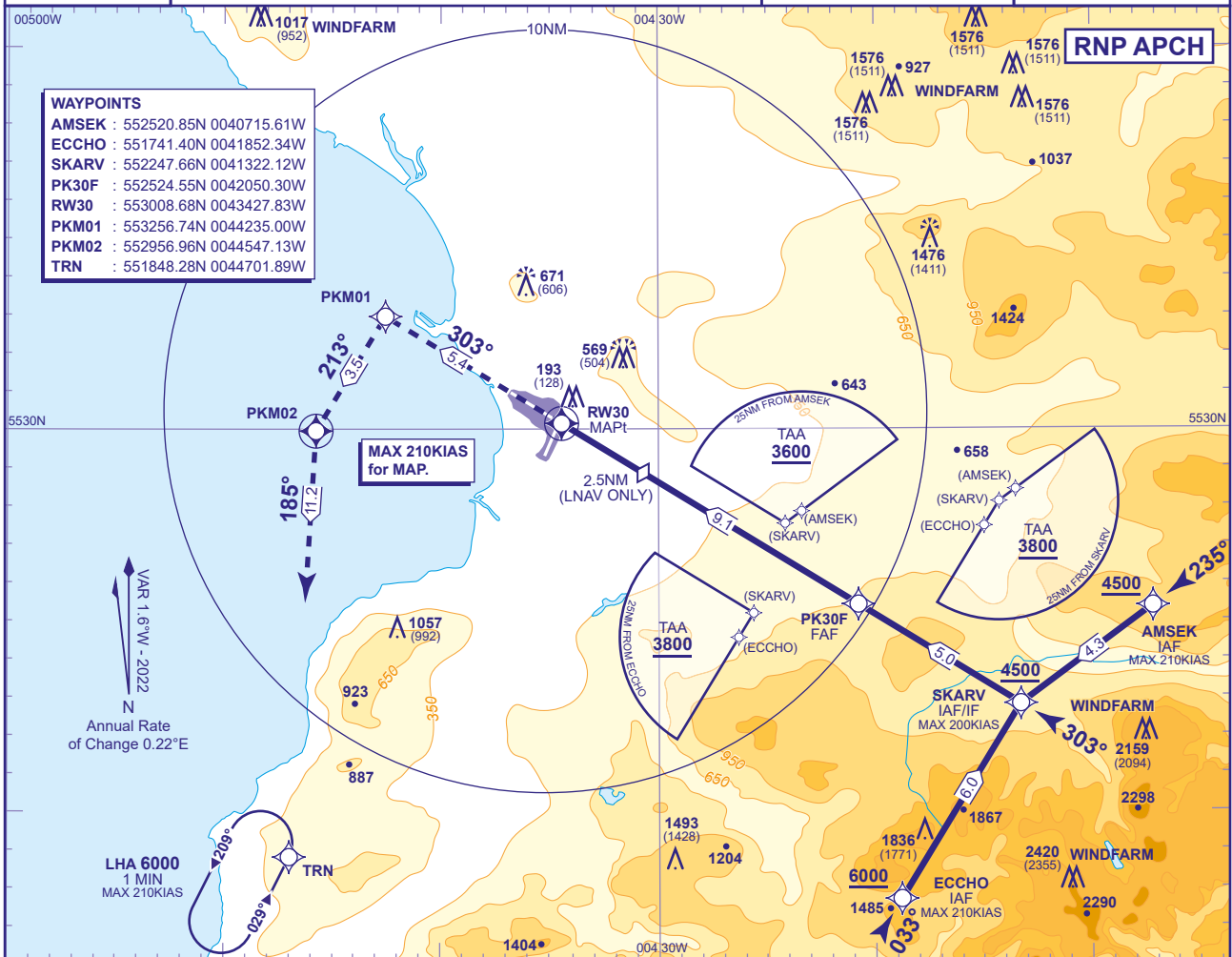


INSTRUMENT APPROACH CHART - ICAO

PRESTWICK
RNP
RWY 30
 (ACFT CAT A,B,C,D)

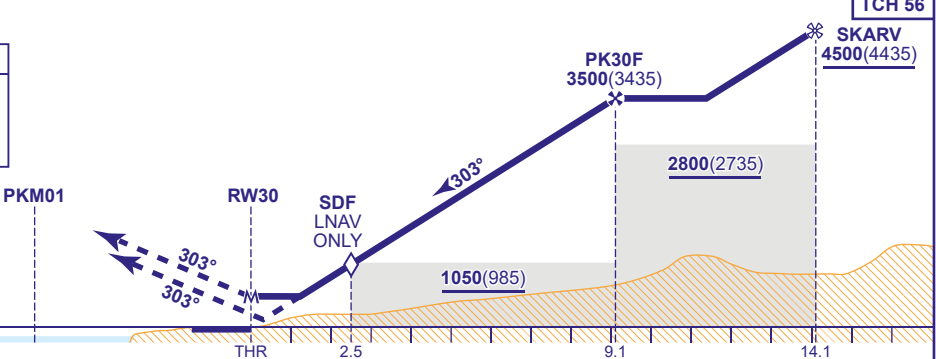
APP	129.450	PRESTWICK APPROACH	AD ELEVATION	65
TWR	118.150, 127.155	PRESTWICK TOWER	THR ELEVATION	65
RAD	129.450, 124.630	PRESTWICK RADAR	OBSTACLE ELEVATION	2420 AMSL (2355) (ABOVE THR)
ATIS	121.130	PRESTWICK INFORMATION		
			BEARINGS ARE MAGNETIC	MIN TEMP -15°C
				TRANSITION ALTITUDE 6000



RECOMMENDED PROFILE VNAV Vertical Path Angle 3.5°(LNAV 6.12%), 370FT/NM

NM to RW30	8	7	6	5	4	3	2.5 SDF	2	1
ALT(HGT)	3090(3025)	2720(2655)	2350(2285)	1980(1915)	1610(1545)	1240(1175)	1050(985)	860(795)	490(425)

MAPt (LNAV): RW30
 Continuous climb to 6000. Initially climb straight ahead to PKM01. Then turn left to PKM02, then left to TRN and hold or as directed by ATC.



Aircraft Category		A	B	C	D	Rate of descent	G/S KT				
OCA (OCH)		LNAV/VNAV	LNAV				FT/MIN	160	140	120	100
VM(C)OCA (OCH AAL)	Total Area	750(685)	870(805)	1070(1005)	1070(1005)		990	870	740	620	500
	SW of RWY 12/30	680(615)	810(745)	910(845)	1070(1005)						

NOTE VPA exceeds 3.5° above 15°C.

CHANGE (7/22): MAG VAR, ANNUAL CHANGE, MAG TRACKS.