

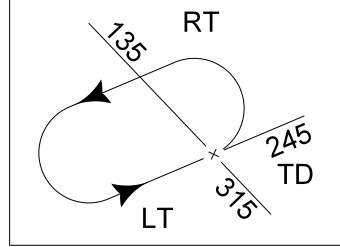
MIPS
INSTRUMENT APPROACH CHART

TACAN RWY 23R
KLEINE-BROGEL (EBBL)

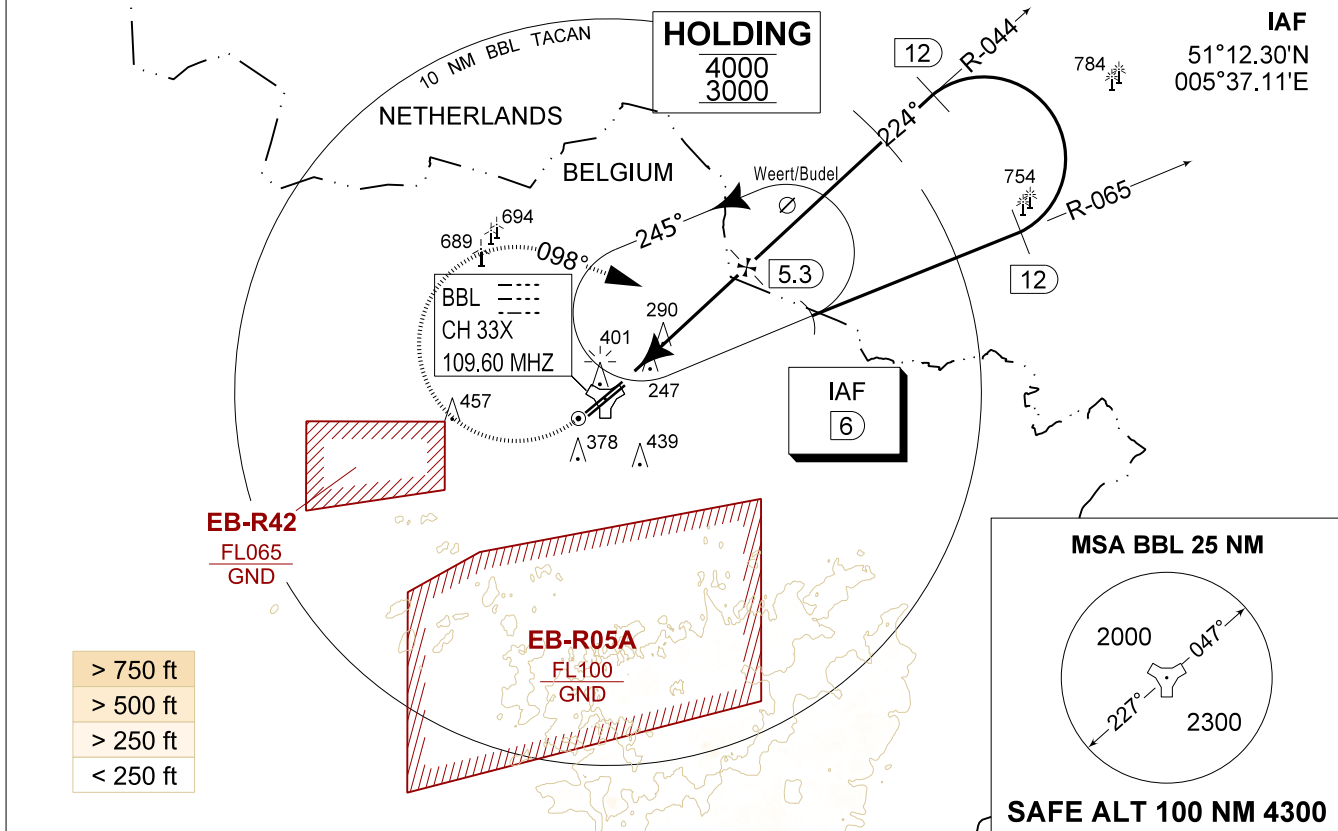
AD ELEV 192

BELGA RADAR 374.400 129.325		KLEINE-BROGEL APP 337.600 134.480		KLEINE-BROGEL TWR 248.075 134.105		KLEINE-BROGEL GND 362.775 122.100	
TACAN BBL CH 33X	APP COURSE 224°	FAF ALT 1700 FT	DESCENT GR 5.24%(3.00°)	MDA 620	THR 161 FT	ALS 930 M	LDA 7926 FT

CAUTION:
a) CLASS E AIRSPACE IN AMSTERDAM FIR

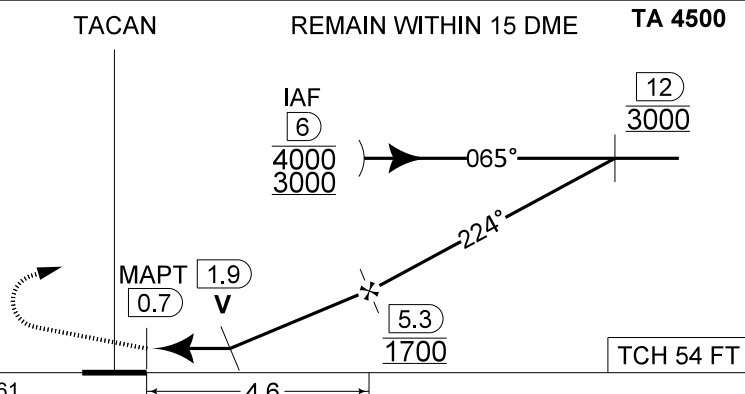


3°E
2024



DME BBL	5	4	3	2
Altitude	1600	1290	970	650
Height	(1439)	(1129)	(809)	(489)

MISSED APPROACH
Climb straight ahead to 1000 FT. Passing 1 DME BBL TACAN turn right track 098° at MAX 210 KIAS (MAX 275 KIAS for HPMA) and continue the climb to 3000 FT. Intercept R-065 outbound. If no radio contact, proceed for a TACAN RWY 23R at 3000 FT.



CAT I	THR 161	4.6	TCH 54 FT	
CATEGORY	A - B	C	D	HPMA
S-TAC 23R	620 - 1.5 459 (500 - 1.5 / 2.4)			
S-PAR 23R	429 - 0.8 268 (300 - 0.8 / 1.3) GS 3.00°	366 - 0.8 205 (300 - 0.8 / 0.9) GS 3.00°		
CIRCLING	750 - 1.6 558 (600 - 1.6)	890 - 2.4 698 (700 - 2.4)	1090 - 3.6 898 (900 - 3.6)	770 - 3.2 578 (600 - 3.2)

TACAN RWY 23R 51°10.10' N 005°28.19' E **KLEINE-BROGEL (EBBL)**

CHANGE: General revision

MIPS

BEL DEFENCE, AIR COMPONENT 28-NOV-2024 - THS