

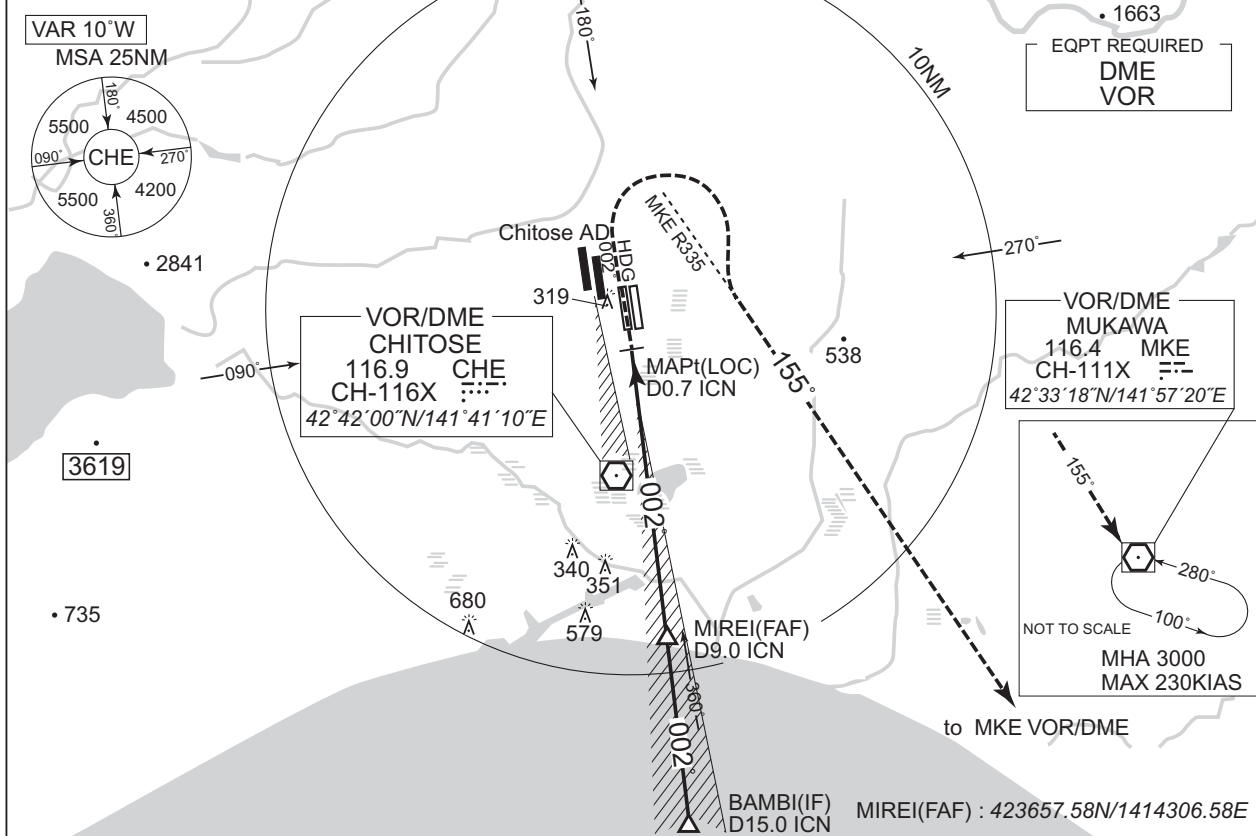
INSTRUMENT APPROACH CHART

RJCC / NEW CHITOSE

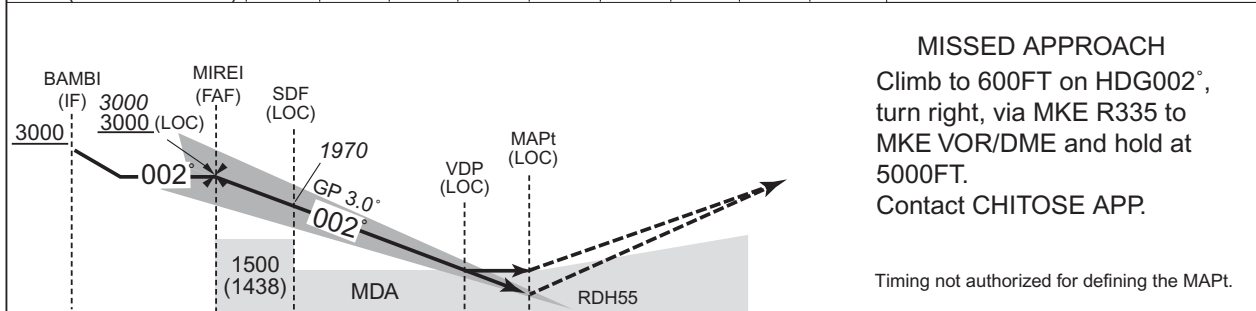
ILS Y or LOC Y RWY01L

CHITOSE APP 120.1 – 124.7	ILS-LOC 110.9 ICN ̄̄̄:-- ILS-GP 330.8 ILS-DME CH-46X	CHITOSE TOWER 118.8 – 126.2 – 121.6G	RADAR AVBL ATIS 128.6
------------------------------	---	---	--------------------------

Simultaneous approach authorized with RJCJ RWY36L(PAR) or RWY36R(PAR)



NM to ICN	FAF	8	7	6	5	4	3	2	MAPt
ALT (3.0° APCH Path)	-	2606	2288	1970	1651	1333	1014	696	-



15.0	9.0	6.0	1.3	0.7	0.2	DME to ICN
14.8	8.8	5.8	1.2	0.5	0	NM to THR

MINIMA		THR elev. 62		AD elev. 70		
CAT	CAT I		LOC		CIRCLING	
	DA(H)	RVR/CMV	MDA(H)	RVR/CMV	MDA(H)	VIS
A	262 (200)	550	470 (408)	900	510 (440)	1600
B				1000	520 (450)	
C						2400
D				1400	620 (550)	3200

Circling to EAST side of RWY only.

CHANGE : DME to ICN for VDP. NM to THR for VDP. MDA(H) for LOC.