


# INITIAL CLIMB PROCEDURES & SID RWY 35

## MILANO/LINATE

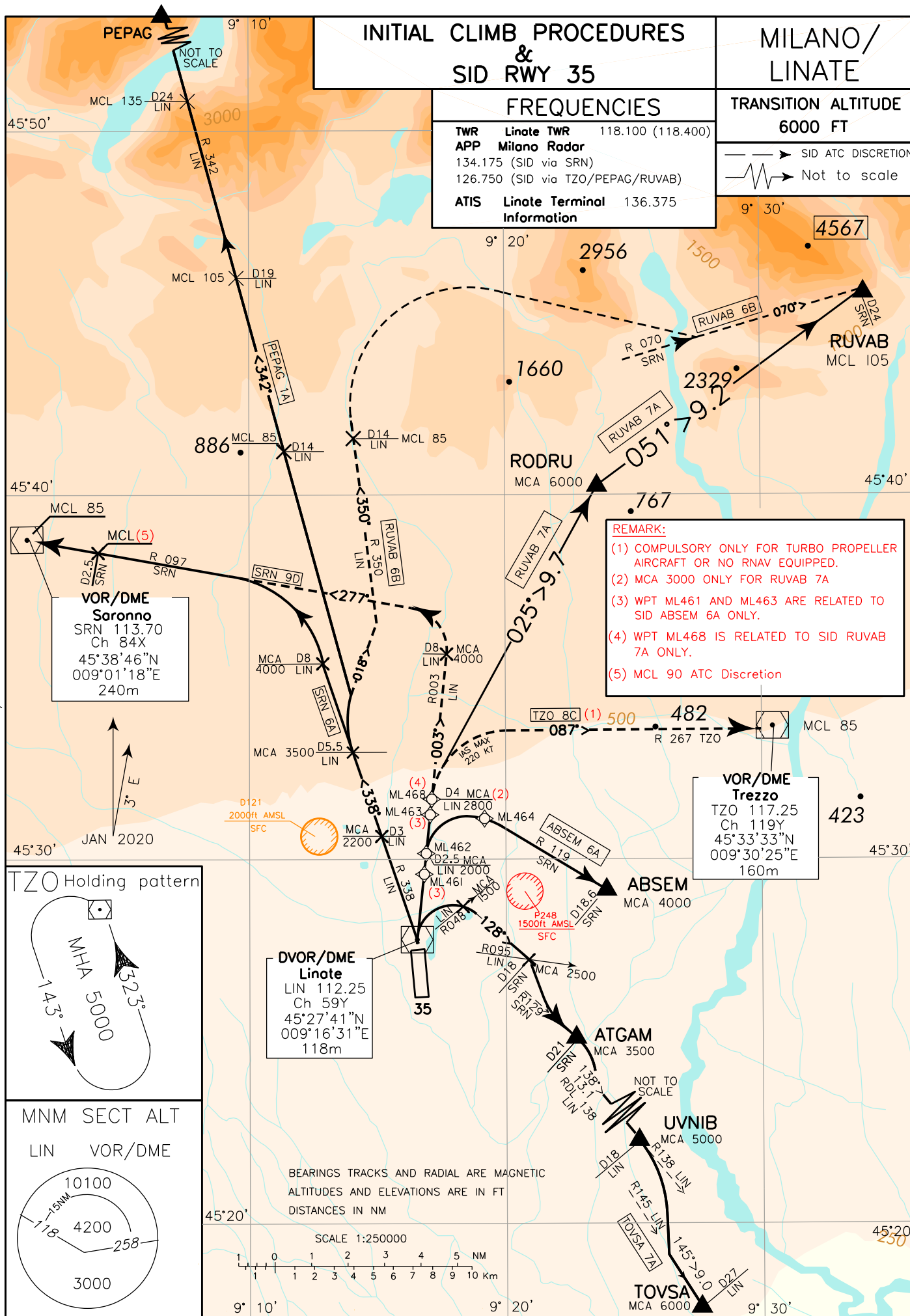
### FREQUENCIES

<b>TWR</b>	<b>Liniate TWR</b>	118.100 (118.400)
<b>APP</b>	<b>Milano Radar</b>	134.175 (SID via SRN) 126.750 (SID via TZO/PEPAG/RUVAB)
<b>ATIS</b>	<b>Liniate Terminal Information</b>	136.375

**TRANSITION ALTITUDE**  
6000 FT

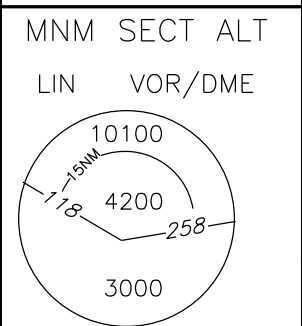
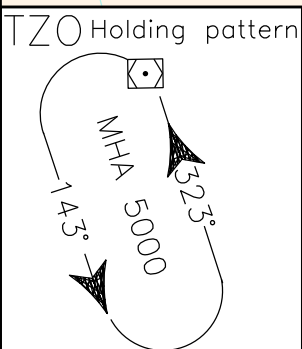
—> SID ATC DISCRETION  
 Not to scale

CHANGE: TOVSA 7A MODIFIED. SRN/TZO NDB AND COD L INDICATIONS REMOVED.



**REMARK:**

- (1) COMPULSORY ONLY FOR TURBO PROPELLER AIRCRAFT OR NO RNAV EQUIPPED.
- (2) MCA 3000 ONLY FOR RUVAB 7A
- (3) WPT ML461 AND ML463 ARE RELATED TO SID ABSEM 6A ONLY.
- (4) WPT ML468 IS RELATED TO SID RUVAB 7A ONLY.
- (5) MCL 90 ATC Discretion



BEARINGS TRACKS AND RADIAL ARE MAGNETIC  
 ALTITUDES AND ELEVATIONS ARE IN FT  
 DISTANCES IN NM

