

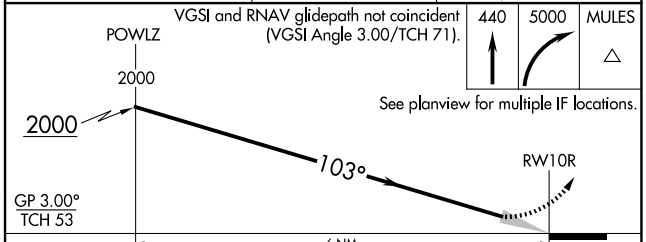
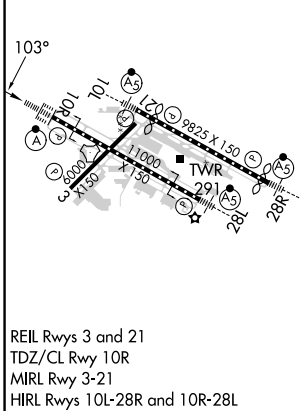
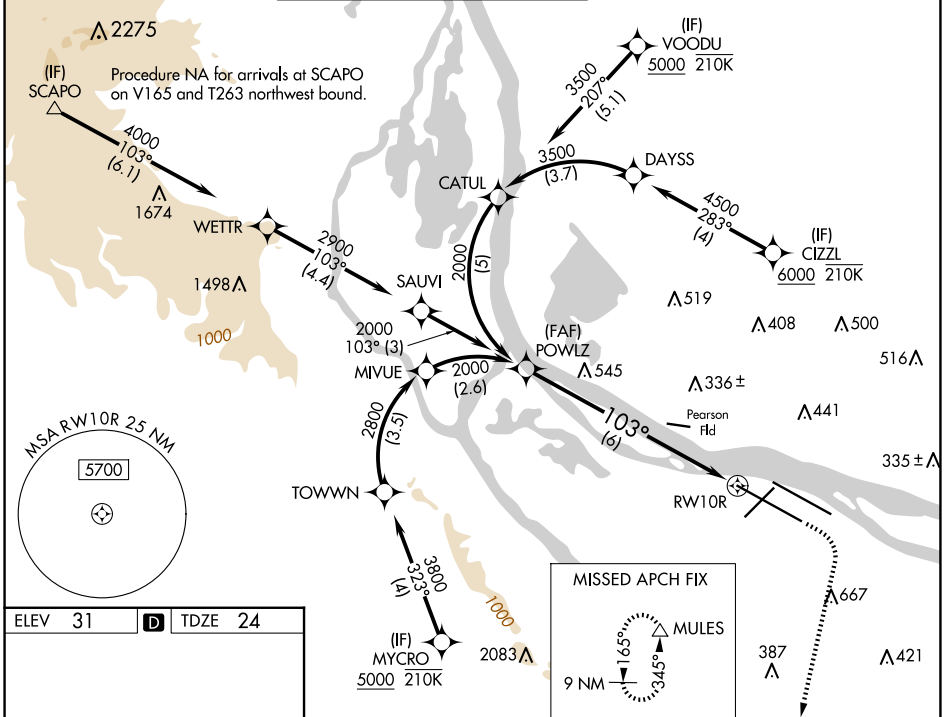
APP CRS	Rwy Idg	<b>11000</b>
<b>103°</b>	TDZE	<b>24</b>
	Apt Elev	<b>31</b>

# RNAV (RNP) Z RWY 10R

PORTLAND INTL (PDX)

RNP AR APCH - GPS. Authorization required. From DAYSS, CATUL, or TOWNN: RF.	ALSF-2	MISSED APPROACH: Climb to 440 then climbing right turn to 5000 direct MULES and hold, continue climb-in-hold to 5000.
▼ For uncompensated Baro-VNAV systems, procedure NA below -5°C or above 54°C. Simultaneous approach authorized. For inop ALS, increase RNP 0.18 all Cats visibility to RVR 4500, increase RNP 0.30 all Cats visibility to RVR 5500.		

D-ATIS	PORTLAND APP CON	PORTLAND TOWER	GND CON	CLNC DEL	CPDLC
<b>128.35</b>	<b>124.35 299.2</b>	Rwy 10L-28R <b>118.7 257.8</b>	Rwys 3-21, 10R-28L <b>123.775 251.125</b>	<b>121.9 348.6</b>	<b>120.125 318.1</b>
<b>269.9</b>					



CATEGORY	A	B	C	D
RNP 0.18 DA		324/24	300 (300-½)	
RNP 0.30 DA		397/35	373 (400-¾)	

**AUTHORIZATION REQUIRED**

NW-1, 20 MAR 2025 to 17 APR 2025

NW-1, 20 MAR 2025 to 17 APR 2025