

STANDARD DEPARTURE CHART - INSTRUMENT

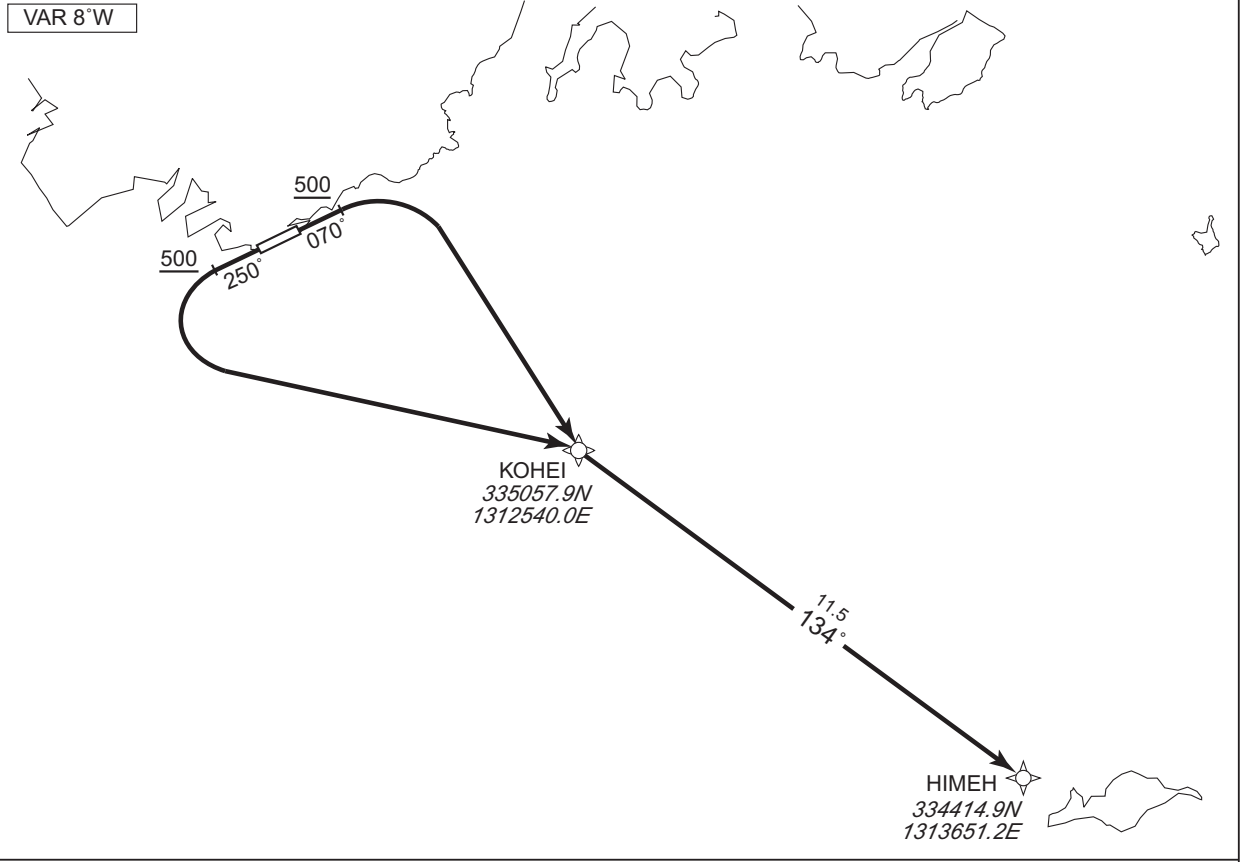
RJDC / YAMAGUCHI-UBE

RNAV SID

HIMESHIMA TWO DEPARTURE

RNP1

Note GNSS required.



RWY07 : Climb on HDG 070° at or above 500FT, turn right direct to KOHEI, to HIMEH.
 RWY25 : Climb on HDG 250° at or above 500FT, turn left direct to KOHEI, to HIMEH.

CHANGE : PROC renamed. VAR. PROC Course.

RWY07

Serial Number	Path Descriptor	Waypoint Identifier	Fly Over	Course °M(°T)	Magnetic Variation	Distance (NM)	Turn Direction	Altitude (FT)	Speed (KIAS)	Vertical Angle	Navigation Specification
001	VA	—	—	070 (062.2)	-8.2	—	—	+500	—	—	RNP1
002	DF	KOHEI	—	—	-8.2	—	R	—	—	—	RNP1
003	TF	HIMEH	—	134 (125.8)	-8.2	11.5	—	—	—	—	RNP1

RWY25

Serial Number	Path Descriptor	Waypoint Identifier	Fly Over	Course °M(°T)	Magnetic Variation	Distance (NM)	Turn Direction	Altitude (FT)	Speed (KIAS)	Vertical Angle	Navigation Specification
001	VA	—	—	250 (242.2)	-8.2	—	—	+500	—	—	RNP1
002	DF	KOHEI	—	—	-8.2	—	L	—	—	—	RNP1
003	TF	HIMEH	—	134 (125.8)	-8.2	11.5	—	—	—	—	RNP1

STANDARD DEPARTURE CHART - INSTRUMENT

RJDC / YAMAGUCHI-UBE

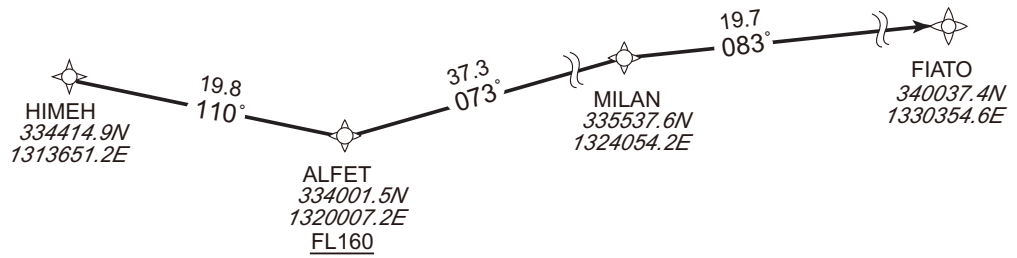
RNAV TRANSITION

ABARTO TRANSITION

RNP1

Note GNSS required.

VAR 8°W



From HIMEH, to ALFET at or above FL160, to MILAN, to FIATO.

CHANGE : PROC Course. Navigation Specification. VAR.

Serial Number	Path Descriptor	Waypoint Identifier	Fly Over	Course °M(°T)	Magnetic Variation	Distance (NM)	Turn Direction	Altitude (FT)	Speed (KIAS)	Vertical Angle	Navigation Specification
001	IF	HIMEH	—	—	-8.2	—	—	—	—	—	RNP1
002	TF	ALFET	—	110 (102.2)	-8.2	19.8	—	+FL160	—	—	RNP1
003	TF	MILAN	—	073 (065.1)	-8.2	37.3	—	—	—	—	RNP1
004	TF	FIATO	—	083 (075.2)	-8.2	19.7	—	—	—	—	RNP1