

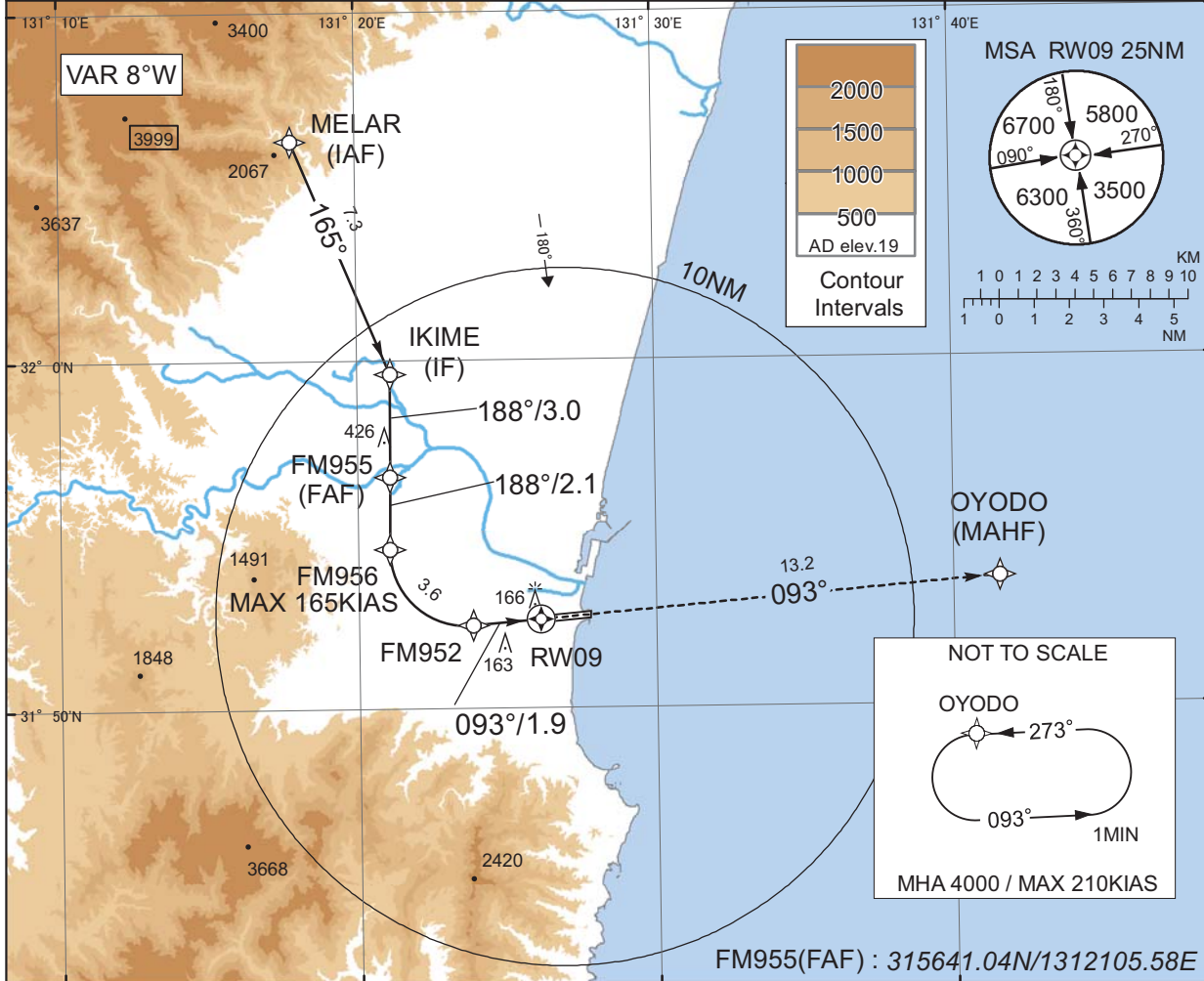
INSTRUMENT APPROACH CHART

RJFM / MIYAZAKI

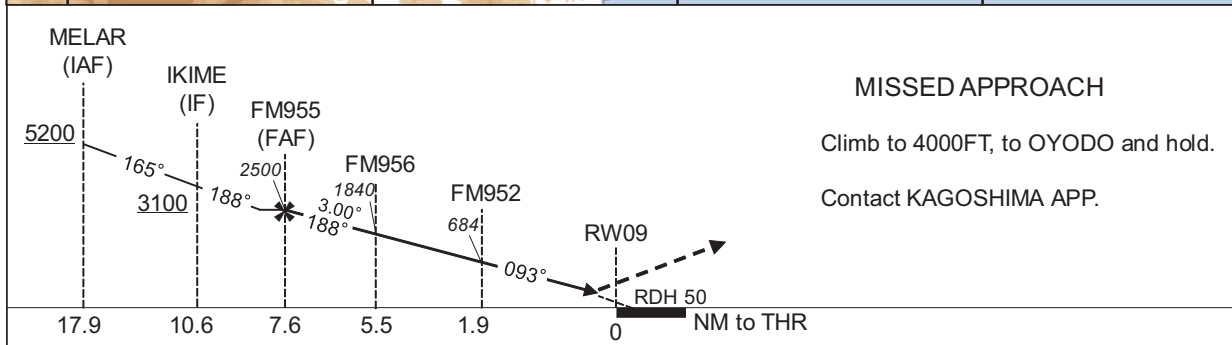
RNP X RWY09(AR)

KAGOSHIMA APP 121.4 - 362.3 120.9 - 261.2	RNP AR RF required.	MIYAZAKI TOWER 118.3 - 126.2 123.6 - 261.2	RADAR AVBL ATIS 126.8
---	------------------------	--	--------------------------

For uncompensated Baro-VNAV systems, procedure not authorized below -5°C / above 45°C



CHANGE : VAR. PROC course. HLDG pattern at OYODO.



MINIMA	THR elev. 15	AD elev. 19
CAT	RNP 0.30	
	DA(H)	CMV
A	-	-
B	-	-
C	327(312)	1400
D		1600

Authorization Required

INSTRUMENT APPROACH CHART

RJFM / MIYAZAKI

RNP X RWY09(AR)

Coding Table

Serial Number	Path Descriptor	Waypoint Identifier	Fly Over	Course °M(°T)	Magnetic Variation	Distance (NM)	Turn Direction	Altitude (FT)	Speed (KIAS)	VPA/RDH (°/FT)	RNP Value
001	IF	MELAR	-	-	-7.5	-	-	+5200	-	-	-
002	TF	IKIME	-	165 (157.4)	-7.5	7.3	-	+3100	-	-	0.3
003	TF	FM955	-	188 (180.6)	-7.5	3.0	-	2500	-	-	0.3
004	TF	FM956	-	188 (180.6)	-7.5	2.1	-	1840	-165	-3.00	0.3
005	RF Center: FMRF1 r=2.18NM	FM952	-	-	-7.5	3.6	L	684	-	-3.00	0.3
006	TF	RW09	Y	093 (085.1)	-7.5	1.9	-	65	-	-3.00/50	0.3
007	TF	OYODO	-	093 (085.1)	-7.5	13.2	-	4000	-	-	1.0

Path	Waypoint Identifier	Inbound Course °M(°T)	Magnetic Variation	Outbound Time (MIN)	Turn Direction	Minimum Altitude (FT)	Maximum Altitude (FT)	Speed (KIAS)	RNP Value
Hold	OYODO	273 (265.9)	-7.5	1.0 (-14000)	L	4000	FL140	-210(-14000)	1.0

Waypoint Coordinates

Waypoint Identifier	Coordinates	RF Arc Center Identifier	Coordinates
MELAR	320620.09N / 1311750.24E	FMRF1	315435.02N / 1312337.63E
IKIME	315938.25N / 1312107.83E		
FM955	315641.04N / 1312105.58E		
FM956	315436.46N / 1312104.01E		
FM952	315224.44N / 1312350.57E		
RW09	315234.26N / 1312607.02E		
OYODO	315340.52N / 1314134.32E		

CHANGE : PROC course. VAR. HLDG pattern at OYODO added.