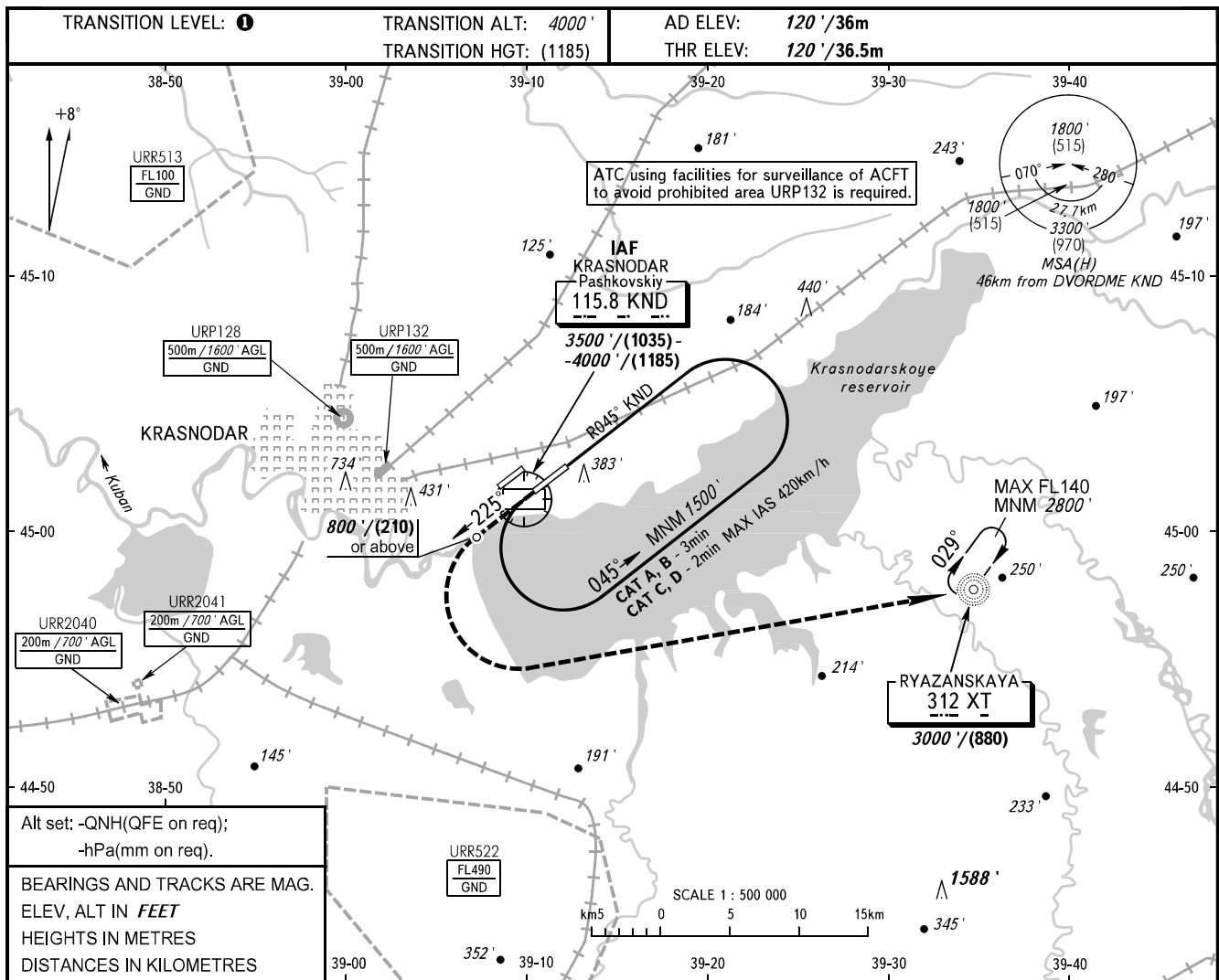


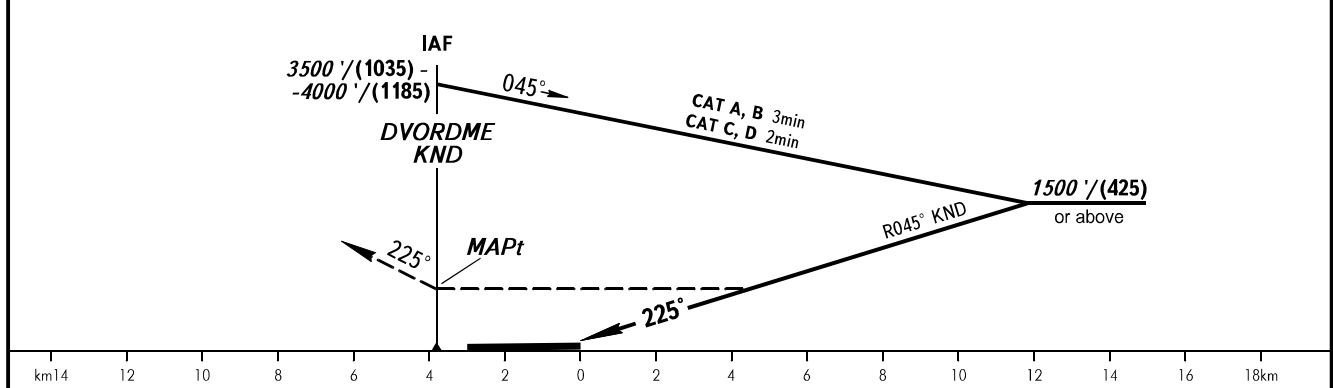
INSTRUMENT  
APPROACH  
CHART - ICAO

RADAR	121.300
TOWER	118.200

KRASNODAR, RUSSIA  
PASHKOVSKIY  
DVOR W RWY 23L



**MISSED APPROACH**  
Climb on track 225° to 800'/(210) or above, turn LEFT to NDB XT climbing to 3000'/(880).



OCA(H)		A	B	C	D
Straight-in	Approach	740' (620')	740' (620')	740' (620')	740' (620')
	Approach				
Circling		740' (620')	740' (620')	780' (660')	830' (710')

**① TRANSITION LEVEL:**  
- FL060 when QNH is 977 hPa (733mm mercury column) or above;  
- FL070 when QNH is 941 hPa (706mm mercury column) or above, but less than 977 hPa (733mm mercury column).

**NOTE:**  
1. MAPt at DVORDME KND. Timing not authorized for defining MAPt.  
2. Turn before passing MAPt is PROHIBITED.  
3. Wind shear is expected.