

ICAO - INSTRUMENT APPROACH CHART

DOC 8168 ED 5 - 2006 AMDT 4

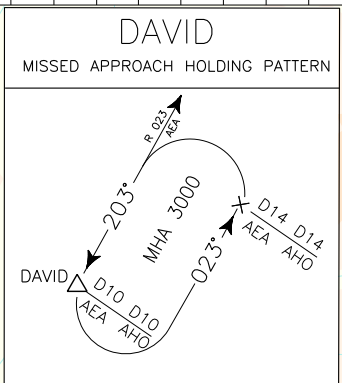
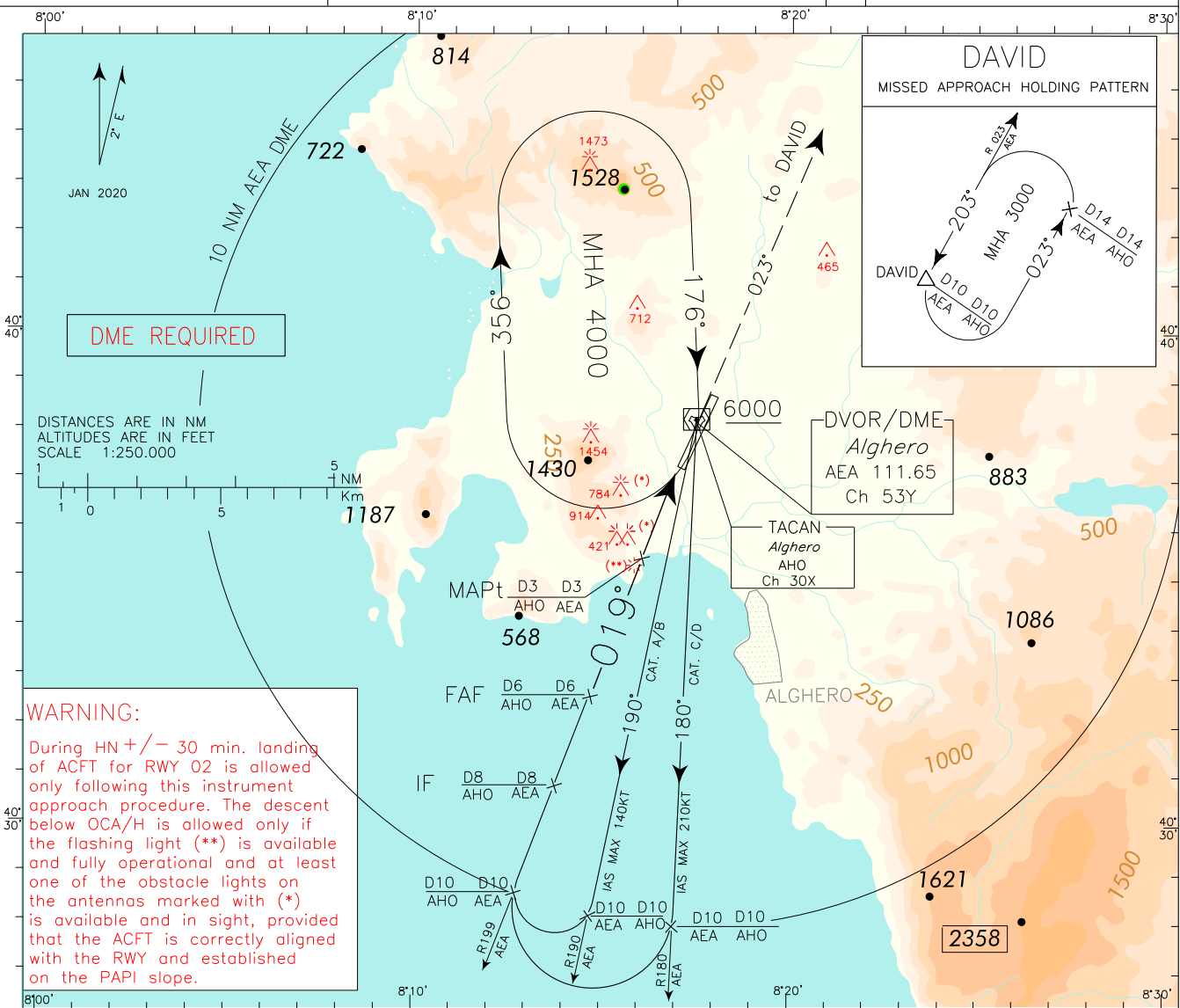
CHANGE: CIRCLING MINIMA CAT A/B/C UPDATED

REMARKS:
 1. Due to not lighted obstacles close to the THR penetrating Annex 14 approach surface, PAPI is compulsory. PAPI OCS not affected by the above obstacles.
 2. Final approach track 020° is offset 3'44" from RCL.

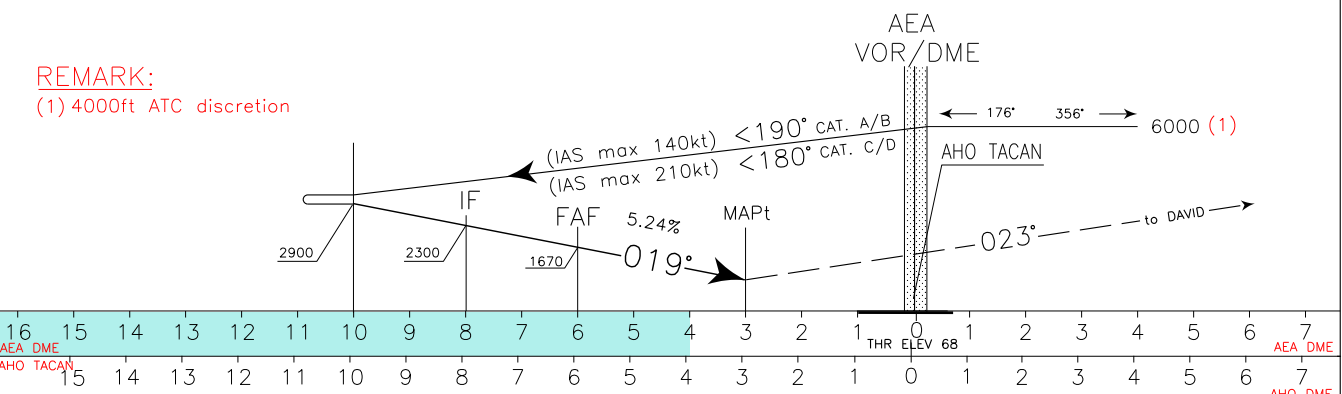
APP Roma Radar 125.950 (127.125)
 TWR Alghero TWR 118.850
 ATIS Alghero Terminal Information 125.025

AD ELEV 87
 LIEA

ALGHERO/ FERTILIA
 VOR RWY 02



TRANSITION ALT 6000
 MISSED APPROACH: Climbing to 3000 ft, proceed to AEA VOR. Then join RDL 023 AEA VOR (TR 023°) bound to DAVID, to be reached at 3000 ft.



OCA(OCH)		A	B	C	D	WARNING: CIRCLING ALLOWED ONLY EAST OF THE RWY. CIRCLING FOR RWY 02 IS FORBIDDEN DURING HN +/- 30 MIN.	GS	FT PER MIN	FAF-MAPT	MAPt-THR	THR AEA	DME AEA	ALT (HGT)	MNM SECT ALT	
STRAIGHT IN APPROACH	VOR	1100 (1032)					NOT ALLOWED	80	424	2 : 15	1 : 23			8	2300 (2232)
	This procedure can be performed with the following meteorological minima: - ceiling 1500 ft or above; - ground visibility not less than 5 Km; - flight visibility not less than 5 Km by day and 8 Km by night														
	CIRCLING	1220 (1133)		1320 (1233)		1400(1313)	100	530	1 : 48	1 : 06	7	2000 (1932)			
							120	636	1 : 30	0 : 55	6	1670 (1602)			
							140	742	1 : 17	0 : 47	5	1350 (1282)			