

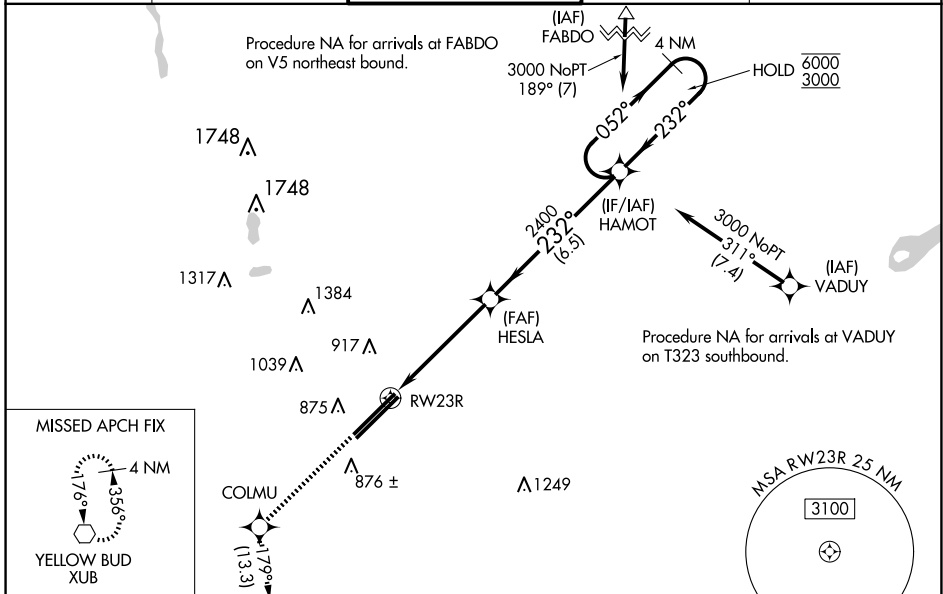
WAAS CH <b>78421</b> <b>W23B</b>	APP CRS <b>232°</b>	Rwy Idg TDZE <b>743</b> Apt Elev <b>744</b>	<b>10913</b>
--	------------------------	---	--------------

# RNAV (GPS) RWY 23R

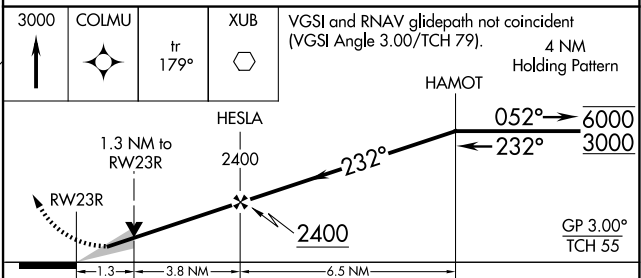
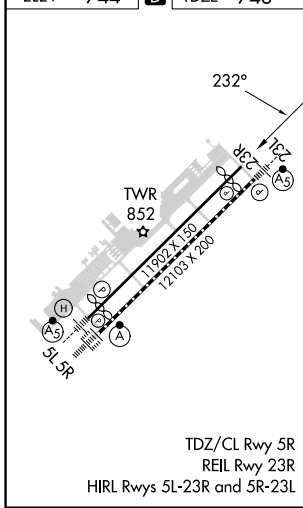
RICKENBACKER INTL (LCK)

RNP APCH - GPS.	<p><b>⚠</b> Circling NA northwest of Rwy 5L-23R. For uncompensated Baro-VNAV systems, LNAV/VNAV NA below -16°C or above 54°C. Baro-VNAV and VDP NA when using John Glenn Columbus Intl altimeter setting. When local altimeter setting not received, use John Glenn Columbus Intl altimeter setting: increase LPV DA to 978 feet; increase LNAV/VNAV DA to 1041 feet and all visibilities to 1 SM; increase all MDAs 40 feet and Circling Cat D visibility ¼ SM.</p>	MISSED APPROACH: Climb to 3000 direct COLMU and on track 179° to XUB VOR and hold.
-----------------	--	---

ATIS <b>132.75</b>	COLUMBUS APP CON <b>134.0 279.6</b>	RICK TOWER <b>120.05 348.4</b>	GND CON <b>125.275 275.8</b>	CLNC DEL <b>125.275 275.8</b>
-----------------------	--	-----------------------------------	---------------------------------	----------------------------------



ELEV <b>744</b>	<b>D</b>	TDZE <b>743</b>
-----------------	----------	-----------------



CATEGORY	A	B	C	D
LPV DA		943-¾	200 (200-¾)	
LNAV/VNAV DA		1006-⅞	263 (300-⅞)	
LNAV MDA	1220-1	477 (500-1)	1220-1⅓	477 (500-1⅓)
CIRCLING	1240-1	496 (500-1)	1280-1½ 536 (600-1½)	1400-2 656 (700-2)

EC-2, 20 MAR 2025 to 17 APR 2025

EC-2, 20 MAR 2025 to 17 APR 2025