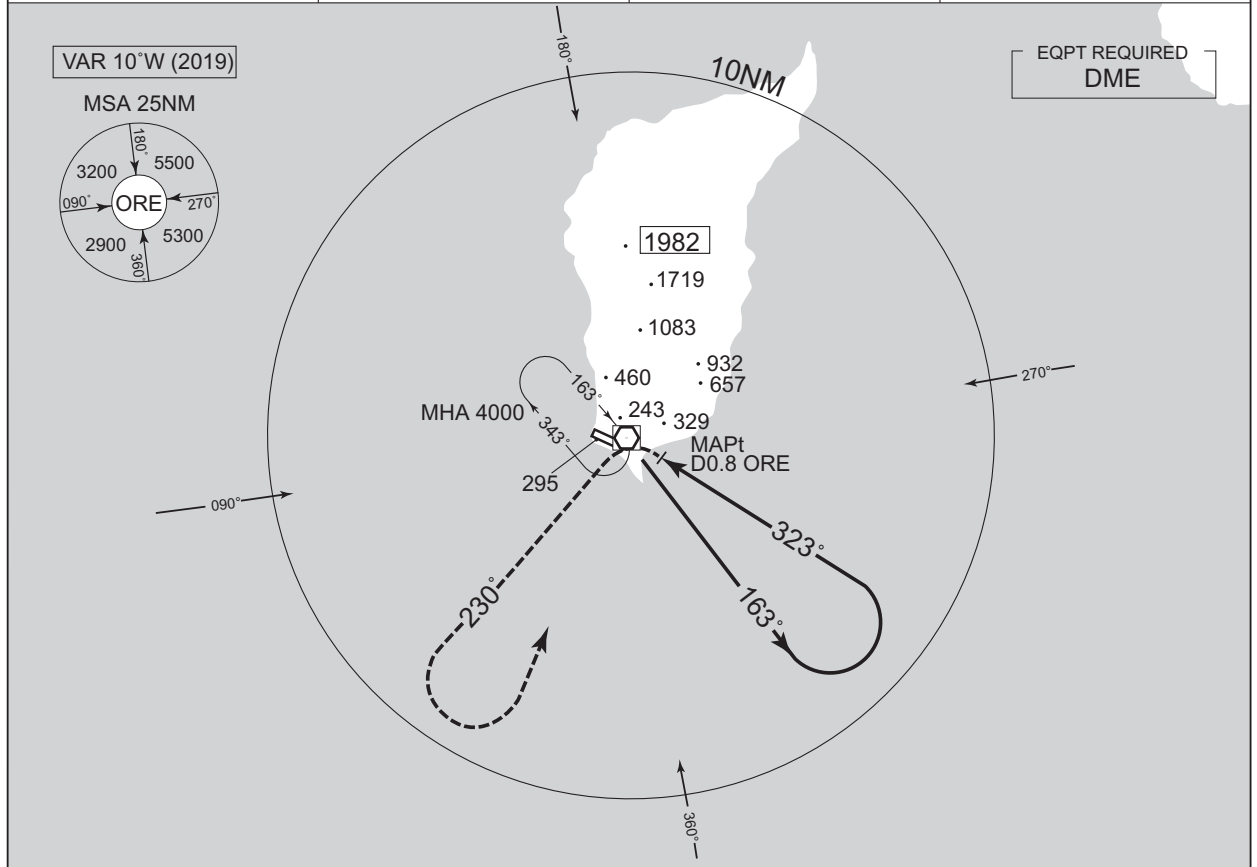


INSTRUMENT APPROACH CHART

RJEO / OKUSHIRI

VOR RWY31

<p>TOKYO CONTROL 119.3 – 276.5 134.25 – 260.4</p>	<p>OKUSHIRI VOR/DME 109.85 ORE CH-35Y 42°04'13"N / 139°26'36"E</p>	<p>OKUSHIRI RADIO 122.7 AFIS provided by New Chitose Airport Office</p>	<p>NO RADAR</p>
---	--	---	-----------------



MISSED APPROACH Remain within ORE 10.0DME

Turn left, climb to 3000FT or above via ORE R230, turn left direct to ORE VOR/DME within ORE 10.0DME and hold at 4000FT.
Contact OKUSHIRI RADIO.

DME to ORE 0.8 1.4

MINIMA		THR elev. 141	AD elev. 161	
CAT			CIRCLING	
	MDA(H)	CMV	MDA(H)	VIS
A	600 (459)	1500	600 (439)	1600
B			620 (459)	
C		2000		2400
D	-	-	-	-

CHANGE : ATC call sign.

Circling to SOUTH side of RWY only.