

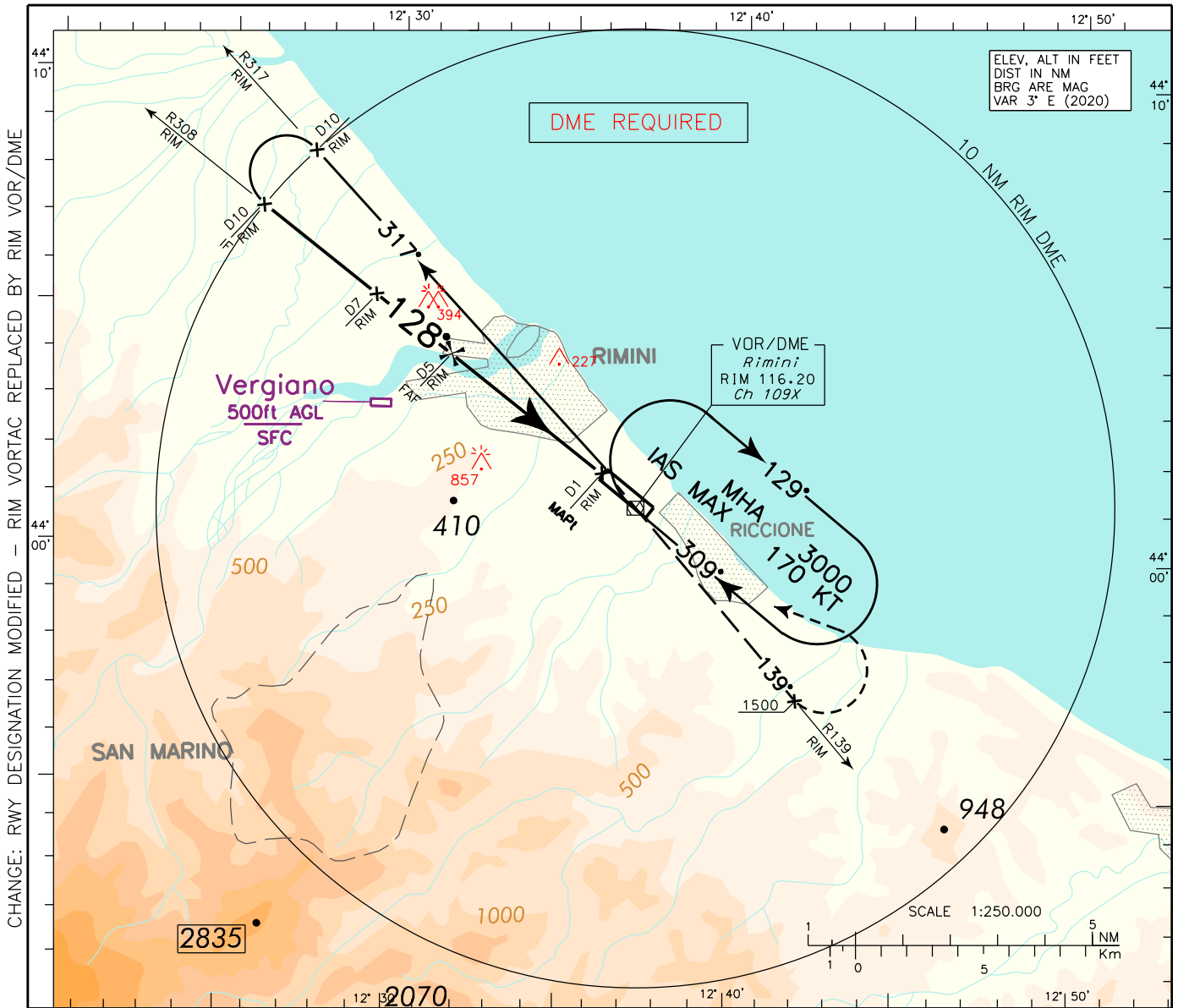
INSTRUMENT APPROACH CHART - ICAO

AERODROME ELEV 41

APP Bologna APP/Radar
TWR Rimini TWR

CH 118.150 (133.775)
131.225

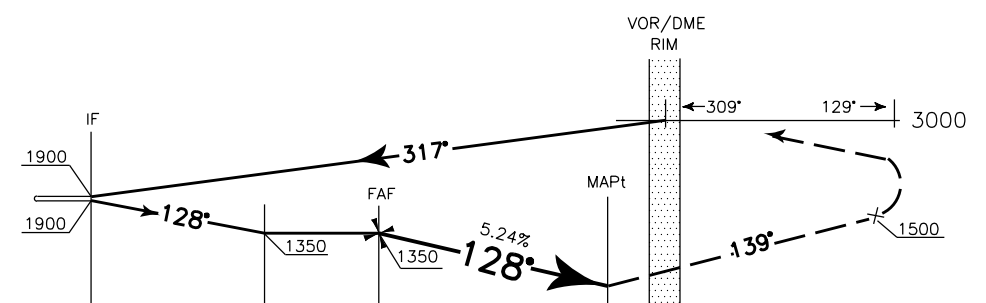
RIMINI/Miramare (LIPR)
VOR-Z RWY 12 (CAT. A-B)



ELEV, ALT IN FEET
DIST IN NM
BRG ARE MAG
VAR 3° E (2020)

CHANGE: RWY DESIGNATION MODIFIED - RIM VORTAC REPLACED BY RIM VOR/DME

TRANSITION ALT 6000 MISSED APPROACH: At D1 RIM DME climb to 3000 FT and, as soon as practicable, turn right to join RDL 139 RIM VOR. Passing 1500 FT turn left bound to RIM VOR/DME holding pattern to reach at 3000 FT.



D12	D11	D10	D9	D8	D7	D6	D5	D4	D3	D2	D1	D0	D1	D2	D3	D4	D5	D6	
10	9	8	7	6	5	4	3	2	1	0	1	2	3	4	5	6	7		
												THR ELEV 20		RIM DME (NM)					
												THR 12 (NM)							

OCA (OCH)		A	B	C	D	REMARK: Circling procedure allowed East of RWY only. 	GS	FT PER MIN	RIM DME	ALT (HGT)	MNM SECT ALT 25 NM
STRAIGHT IN APPROACH	VORDME	600 (580)					70	372	D 5	1350(1330)	
							90	478	D 4	1030(1010)	
							110	584	D 3	710 (690)	
CIRCLING		770 (729)				130	690				
						150	797				