

DAYTON, OHIO

# TACAN RWY 23R

TACAN FFO Chan <b>29</b>	APCH CRS <b>230°</b>	Rwy Ildg THRE <b>12,600</b> 823 Arprt Elev <b>823</b>
-----------------------------	-------------------------	---

[USAF]

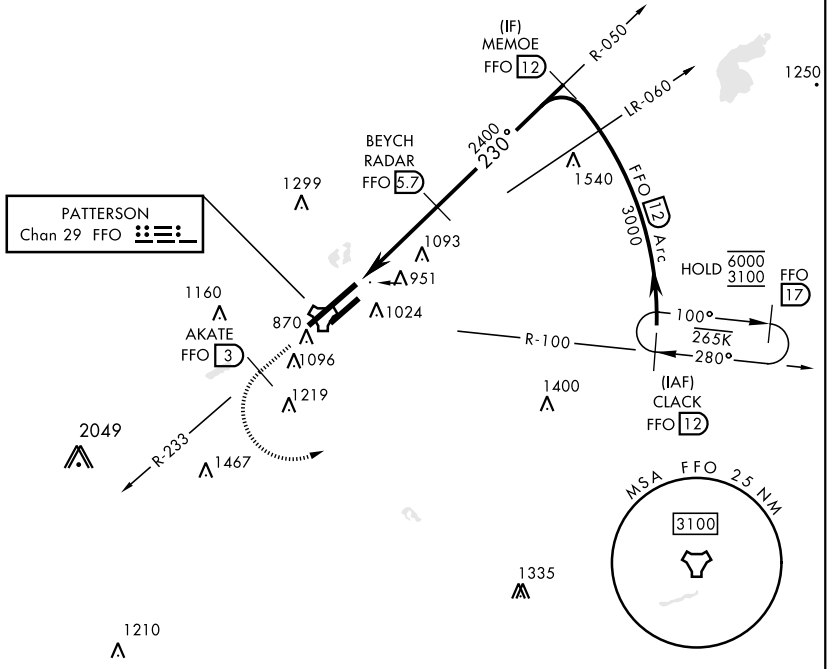
WRIGHT-PATTERSON AFB (KFFO)

▼ \* When ALS inop, increase CAT AB RVR to 55 and vis to 1 mile, CAT CDE vis to 1½ miles. † MISSED APPROACH: Climb to 2000 via FFO R-233, at 3 DME turn left direct CLACK climbing to 3000 and hold.

ATIS <b>124.475 269.9</b>	COLUMBUS APP CON <b>118.85 269.275</b>	PATTERSON TOWER <b>127.8 281.45</b>	GND CON <b>121.8 335.8</b>
------------------------------	---	--	-------------------------------

\*\* When Rwy 23R VGSI inop, circling to Rwy 23R NA at night.

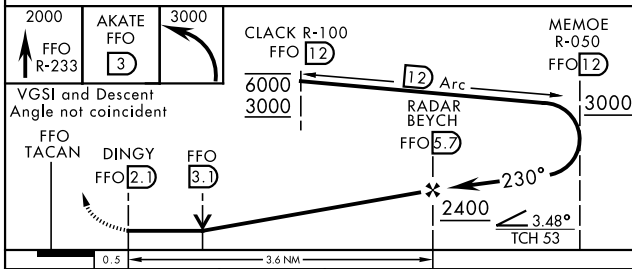
† Missed approach requires use of RNAV or ATC radar monitoring.



EC-2, 20 MAR 2025 to 17 APR 2025

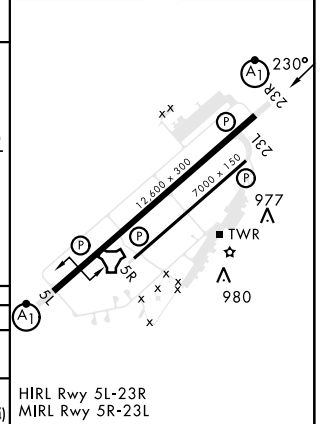
EC-2, 20 MAR 2025 to 17 APR 2025

EMERG SAFE ALT 100 NM 3700



ELEV	823	THRE	823
------	-----	------	-----

CATEGORY	A	B	C	D	E
S-23R *	1360/24 537 (600-½)		1360/55	537	(600-1)
CIRCLING **	1380-1 557 (600-1)	1440-1 617 (700-1)	1560-2 737 (800-2)	1620-2½ 797 (800-2½)	1620-2¾ 797 (800-2¾)



DAYTON, OHIO  
Amdt 6 30APR15

39° 50'N-84° 03'W

WRIGHT-PATTERSON AFB (KFFO)

# TACAN RWY 23R